



MONTIGO®



FIREPLACES

Custom
commercial



our company

About Montigo 4

our projects

Commercial Projects 22

Luxury Homes..... 36

our products

Custom BF Series..... 42

 features 44

 single sided 46

 see through 48

Custom C View Series..... 50

 features 52

 single sided 54

 see through 56

 corner left / right..... 58

 bay 60

 pier..... 62

 four sided 64

 round 66

 octagon..... 68

 tornado 69

Custom Outdoor 70

 in/outdoor STIO..... 72

 outdoor ODD..... 74

 linear firepit 75

 round firepit 76

 square firepit 77

Prodigy Series..... 78

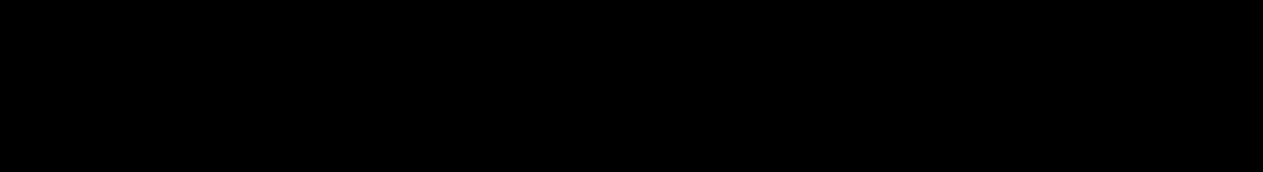
 flexible viewing area..... 80

 single sided 82

 see through 84

 corner left / right..... 86

 bay 88

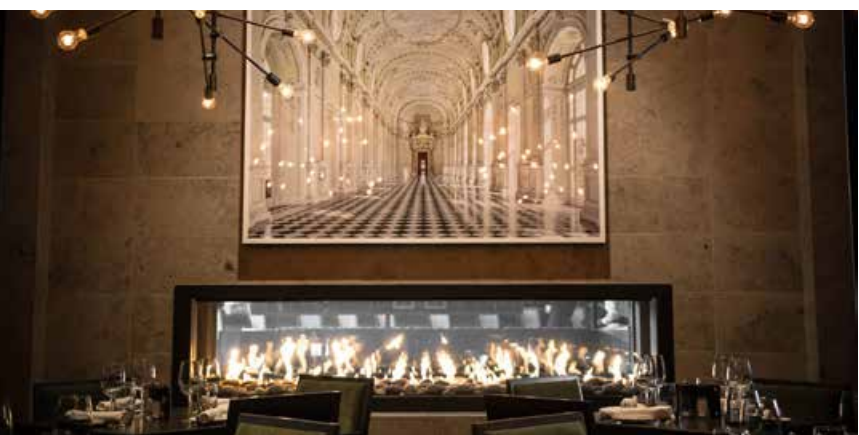


Ocean Prime | Denver, CO | C View C4W6x2



Hotel Omni | Dallas, TX | C View C1320CR

Marriott Fairfield Inn | New York, NY | C View C420



The Keg Park Royal | Vancouver, BC | C View C820ST



Inspired by architects,
guided by builders,
manufactured to perfection.

Unparalleled Expertise

Montigo is North America's premier producer of standard and custom engineered handcrafted gas fireplaces for commercial and residential projects.

Unique to each installation, our fireplaces are the heart of a warm and inviting atmosphere. They are featured in luxury homes, hotels, casinos, restaurants, universities, sports stadiums and other public settings.

We offer a wide range of striking, standard residential models – each engineered and built to our exacting standards.

We also work closely with designers and architects to engineer, handcraft and install awe-inspiring, bespoke fireplaces for one-of-a-kind spaces.

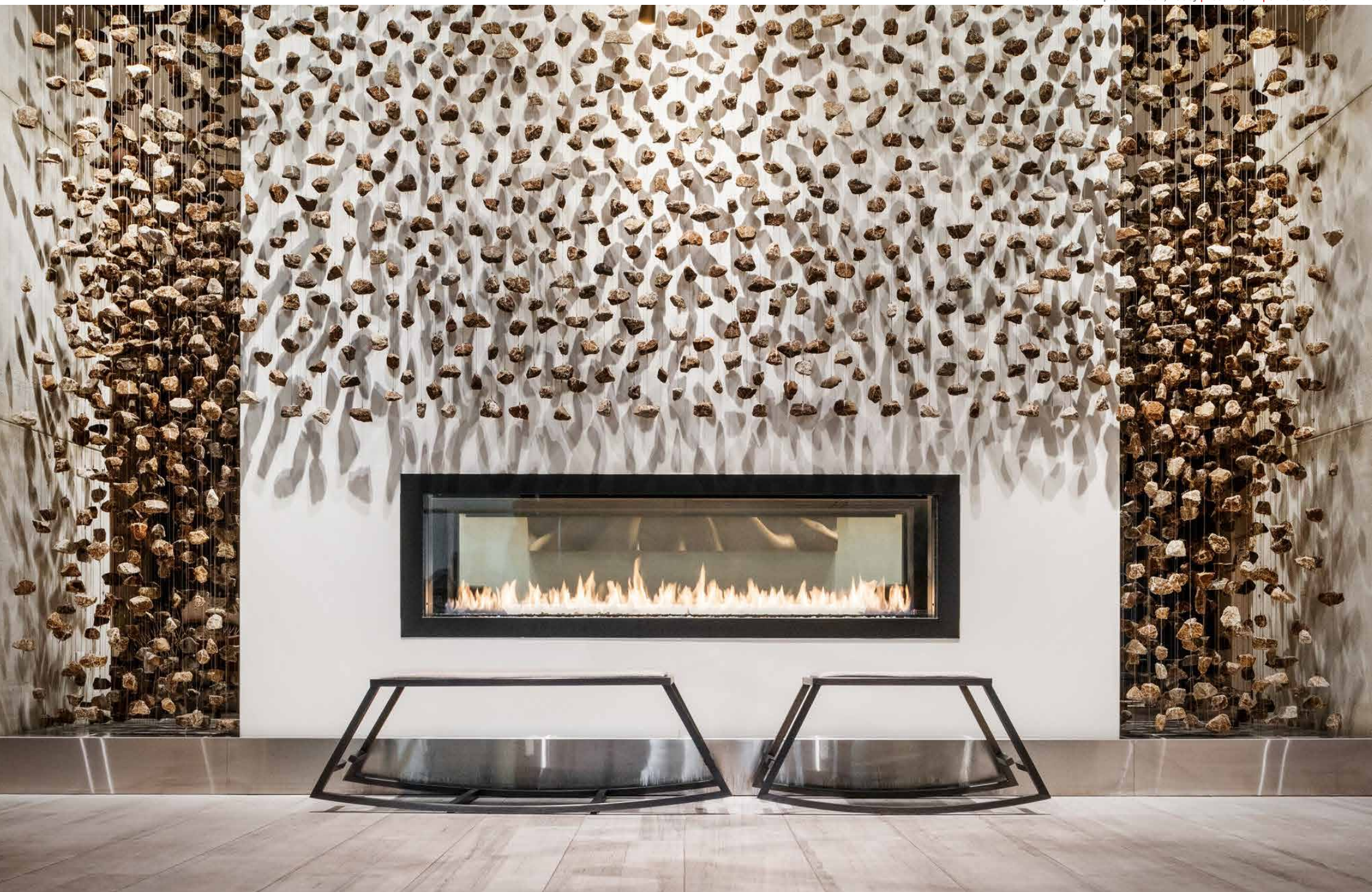
We collaborate with you to help create a sense of space with our fireplaces.

*If you can dream it,
we can build it.*



From concept
to completion —
No project is too complex.

Hotel Kimpton Aertson, Lobby | Nashville, TN | C View 0620ST



Decades of Experience

With many decades of manufacturing excellence, collaborative relationships with architects, designers, builders and other professionals, and an instinctive drive to lead the fireplace revolution, Montigo delivers the perfect fireplace to suit your distinct style.

Designing a commercial space?

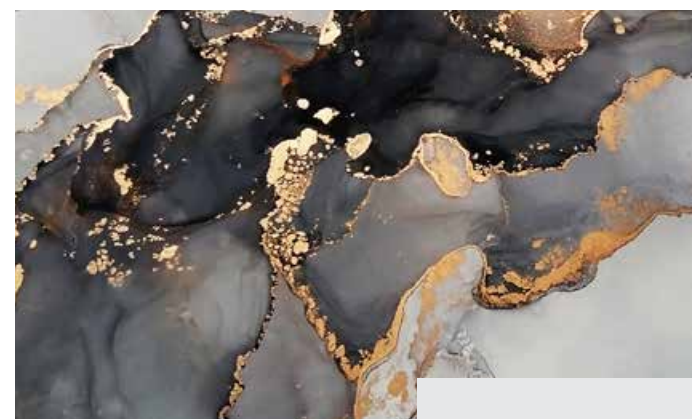
Custom design, custom made, unique to each installation. From hotels to restaurants, and other public spaces, a fire feature is the heart of every warm and inviting space. Special requirements, unforeseen challenges, 24/7 commercial use – no project is too complex.

Designing a residential space?

Working with you and your clients, Montigo's team will assist you in finding a fireplace perfectly suited to the space while taking into account the desire for low impact screen visibility, integration to home automation systems, flush terminations and more.

Designing multi-family dwellings?

Only Montigo has more than four decades of experience in assisting design professionals to create the focal point of shared spaces with our spectacular custom units AND provide warmth and ambiance to each suite with our vast offering of residential units.



Montigo
– The Mark of Quality

All of us at Montigo take pride in knowing that no other manufacturer can boast of the dramatic impact on fireplace design trends that we have had over the decades. Many of the innovations taken for granted today are the result of our highly skilled, creative engineering team and craftspeople.

Whether we are inventing the first zero-clearance gas fireplace (1976) or pioneering cool-touch glass technology (2002), perfection in form and function is the driving force behind the work we do at Montigo.

When it comes to choosing a fireplace, there are a number of factors to consider:

- Quality
- Experience
- Technology
- Ease of Installation
- Customization

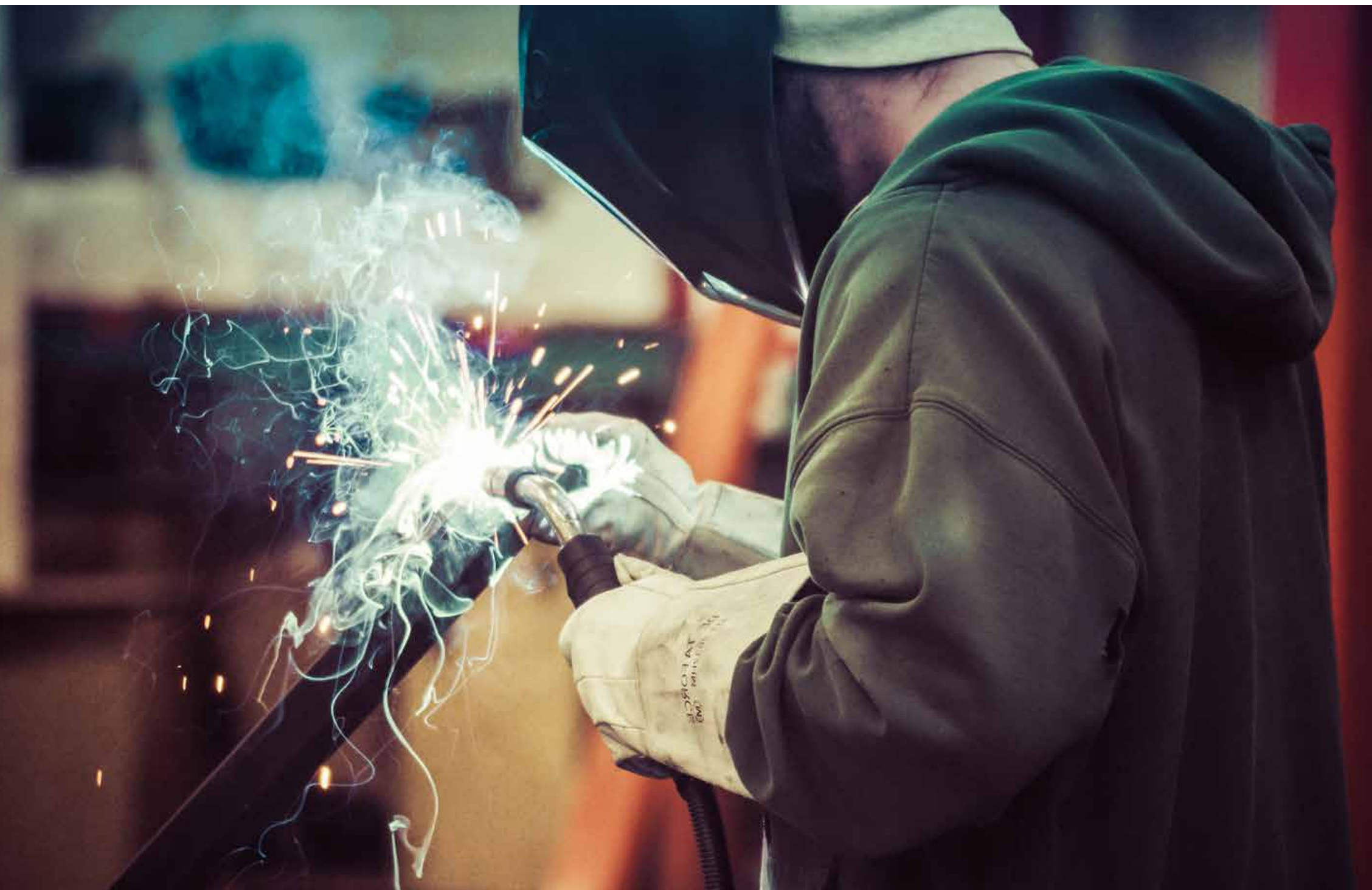


Handcrafted
with care

The exclusive
Gold Standard product
in the commercial market.



Quality materials.
Quality construction.
Quality performance.



Bespoke

Handcrafted with care and using only the best raw materials, Montigo fireplaces are not only beautiful, they are built to last.

100% US STEEL

All of the steel used to produce our commercial fireplaces is milled in the United States. Montigo believes in the importance of sustainability and environmental responsibility, so the steel we use contains a minimum of 85% recycled content.

Using high quality steel also means a beautiful, durable, heat and corrosion resistant finished product with a longer service-life.

MANUFACTURING PRACTICES

All of Montigo's manufacturing processes have been perfected to ensure consistent operation, efficiency and flame.

A unique combination of leading edge design and engineering so every Montigo fireplace is an impressive model of function and form.

Our standard residential fireplaces are manufactured in the US and Canadian plants, custom engineered commercial fireplaces are produced in Canada. This ensures efficient delivery of product throughout North America.



Technology

Montigo leads the industry in the development of new technologies to improve safety, enhance and work with the latest design styles, and increase performance.

Over the past 40 years, many of the inner components of each Montigo fireplace have been engineered and re-engineered, resulting in the most efficient operation and the nicest looking flame on the market.



COOL-PACK SYSTEM

Montigo's patented award winning COOL-Pack and Power COOL-Pack systems for cool-touch glass have transformed commercial fireplaces by making them more accessible and safe.

Our COOL-Pack systems are installed in all commercial fireplaces, located between the interior and the exterior glass, keeping the exterior glass cool-to-touch.

This advanced technology reduces potential liability issues in commercial applications such as restaurants, hotel lobbies, casinos and spas.

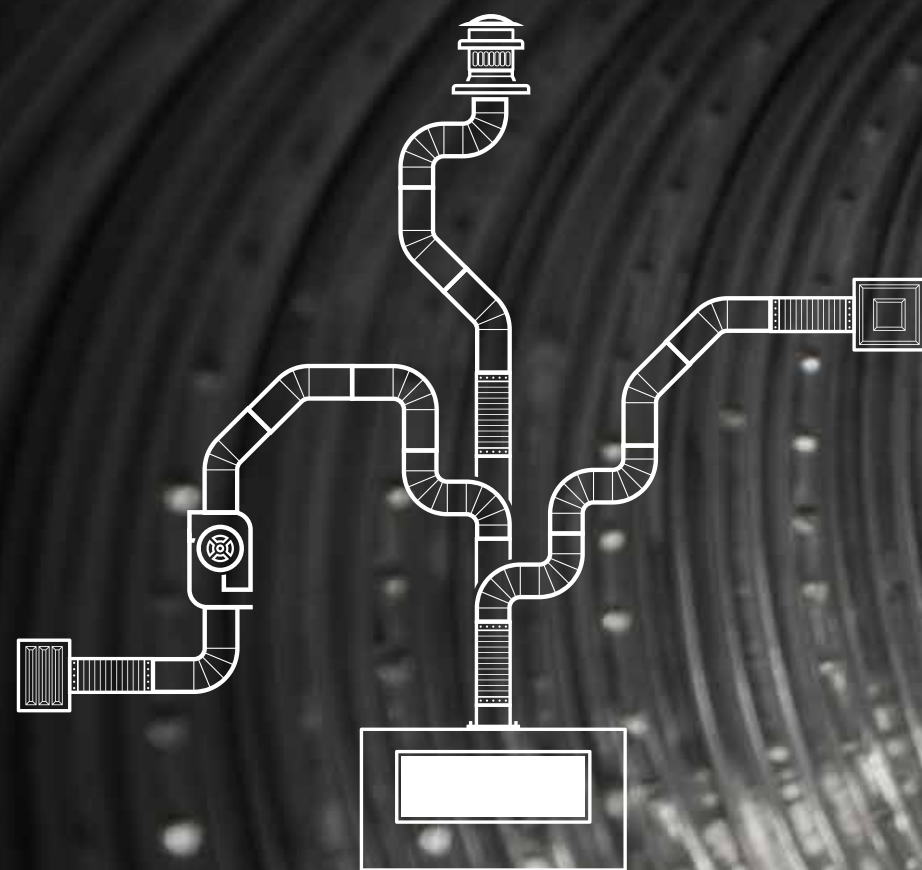


g l a s s
c o o l - t o u c h

Beauty, creativity,
and safety —
operating in unison.



If you can dream it,
we can build it.



Custom Venting

Montigo develops all custom units from an installation friendly perspective. Multiple intake, venting and termination options mean that the fireplace will not dictate your design, but adapt to it.

UNLIMITED VENTING POSSIBILITIES

With our proprietary power venting system and team of expert engineers, we've eliminated the need to locate your fireplace near an exterior wall or have a vertical chimney.

Our power venting system allows for unlimited vent lengths, turns, and even downwards slopes without affecting the safety or aesthetic of the fireplace.

Venting between the fireplace and termination can be run up to 500 feet.

This allows architects, designers, and homeowners to dream big, knowing they have the ability to feature fire in just about any location. Montigo power vents are engineered and manufactured in-house to ensure an optimized fireplace system is created.

Custom Termination

TERMINATION SYSTEMS

Montigo designs and manufactures an extensive line of termination systems, including custom terminations for large scale projects; always with aesthetics and function in mind.

If you are designing a multi-unit building, you'll welcome our expertise in termination systems and our latest innovation – the Louver Termination System. This system mounts flush with the side of the building so there is no visible exterior venting!



In addition to our invisible louvered termination system for multi-unit custom commercial applications, Montigo is the only manufacturer with termination systems that have passed the rain and wind test – a vitally important consideration in wet coastal regions, such as the Pacific Northwest.



Limited only
by your imagination.



A team of professionals
is standing behind each
and every fireplace.



Ease of Installation

All Montigo fireplaces are installed by a certified dealer in your area. Our experienced team of engineers and installation specialists work with dealers to ensure each fireplace is installed efficiently according to our high standards.

We work with architects, designers and dealers throughout North America and around the world to bring warmth and beauty to any commercial and residential space.



On-Site Lab

Every manufactured Montigo fireplace is tested in our on-site lab and certified to meet stringent CSA guidelines, ensuring optimum quality, performance, and safety.



Every custom engineered fireplace is built to meet current ANSI Standards with CSA International US and Canada, so documentation for building codes and public safety requirements are easily acquired when necessary.

Unlike independent custom fireplace manufacturers, our fireplaces are built using CSA certified components and manufacturing processes.

Certified Tested and

Exacting standards ensure peace of mind — every time.



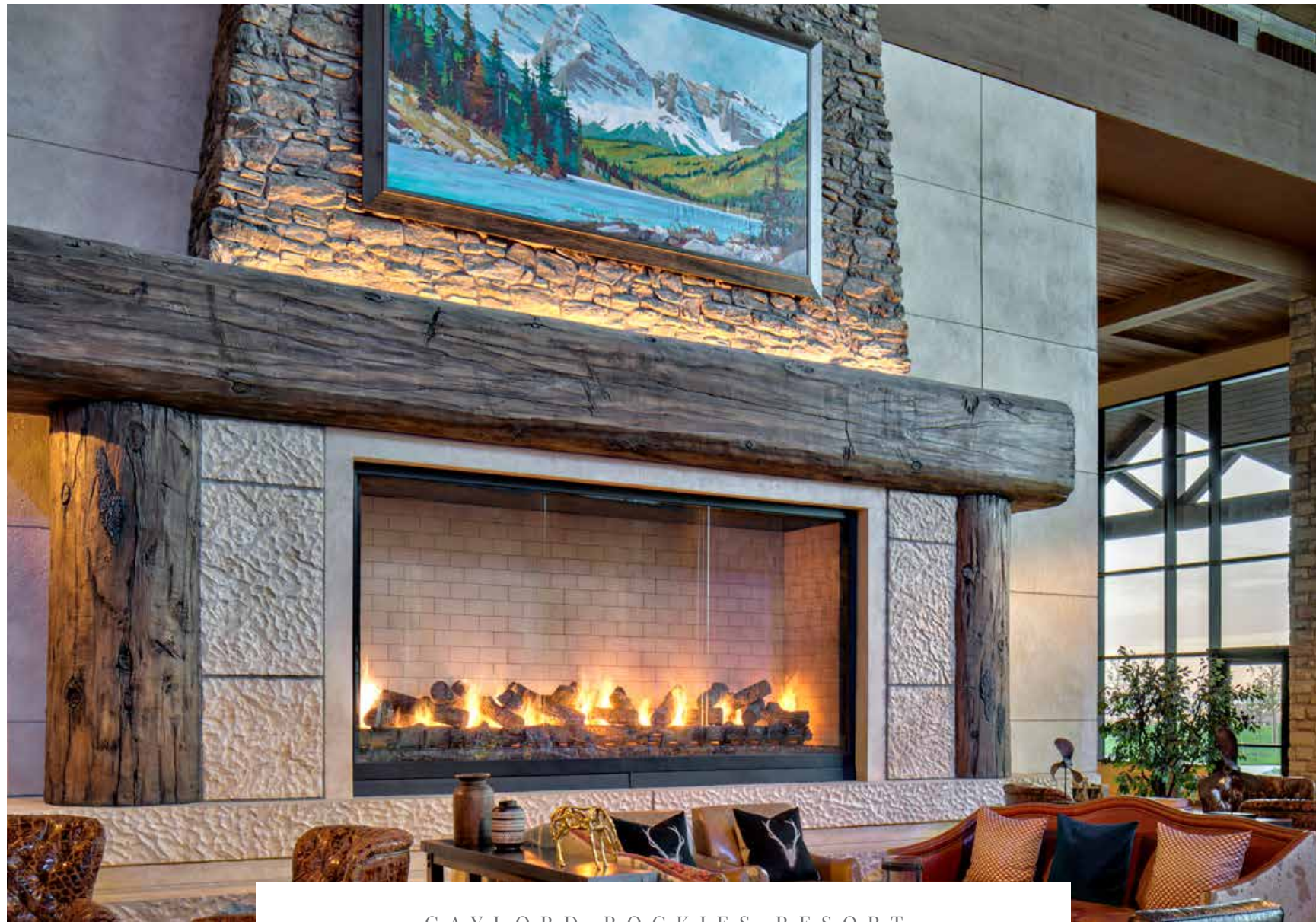
hotels
restaurants
retail spaces
universities
retirement
hospitals
casinos
spas
airports
stadiums
multi-family
luxury homes



PROJECTS

Custom
commercial

Aristo at Avonshire | Toronto, ON | C View C620



GAYLORD ROCKIES RESORT

Gaylord Rockies Resort, Great Room | Aurora, CO | BF Series BF156

Rustic Alpine Charm

Visitors to the world class Gaylord Rockies Resort and Convention Center, just 10 minutes from the Denver International Airport in Colorado, are transported to a mountain-themed playground. The colossal structure encompasses 1.9 million sq-ft of high-end hotel, restaurant and convention space. Designed and constructed with a ski village vibe on an 85-acre site, the property boasts 1,501 rooms, five sit-down restaurants and an indoor and outdoor recreational park.

LOCATION: Aurora, Colorado
ARCHITECT: HKS Architects
DESIGNER: Looney & Associates

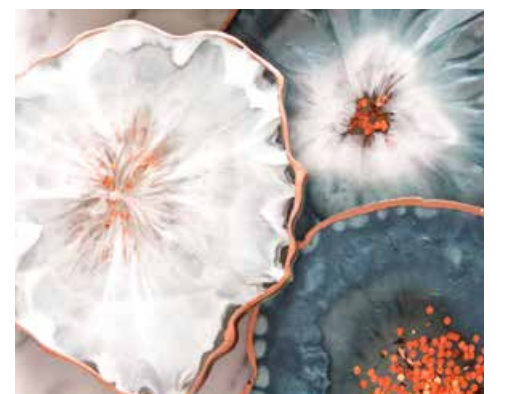
Gaylord Rockies Resort, Relâche Spa | Aurora, CO | BF Series BF52



Gaylord Rockies Resort, Lobby | Aurora, CO | C View C4W10x4



Gaylord Rockies Resort, Old Hickory Steakhouse | Aurora, CO | BF Series BF60ST





Glowbal, Dining Room | Vancouver, BC | C View C620STIO



Glowbal, Patio | Vancouver, BC | C View C620STIO



Glowbal

Dynamic & Lively

Big, bold, and unapologetically chaotic, Glowbal is the namesake and flagship restaurant of Glowbal Restaurant Group. Located in Vancouver's newest architectural landmark, TELUS Garden, this is where stripped down North American cuisine lives and breathes, taking ingredients from across the continent.

LOCATION: Vancouver, BC
ARCHITECT: Henriquez Partners Architects
DESIGNER: BOX Interior Design



Mahony & Sons, Dining Room | Vancouver, BC | BF Series BF100STIO



Mahony & Sons, Patio | Vancouver, BC | BF Series BF100STIO

Mahony & Sons

The Best View in Vancouver

The Mahony and Sons family tradition has been to create an exceptional dining and social experience inspired by traditional Irish public houses.

Mahony and Sons offers an authentic experience combining traditional and contemporary Irish influences with a truly West Coast blend.

LOCATION: Vancouver, BC
DESIGNER: Manley Design & Construction





ARCHER HOTEL

Archer Hotel, Lobby | Austin, TX | BF Series BF52ST

Experience Texas Chic

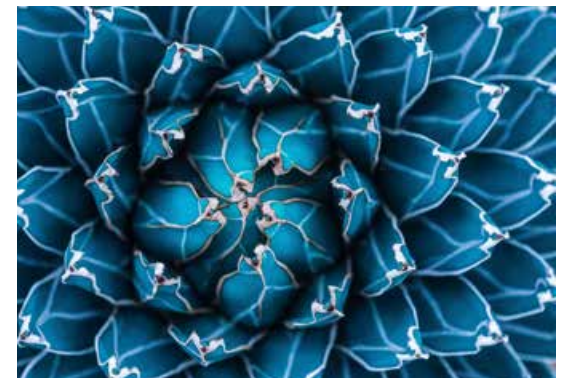
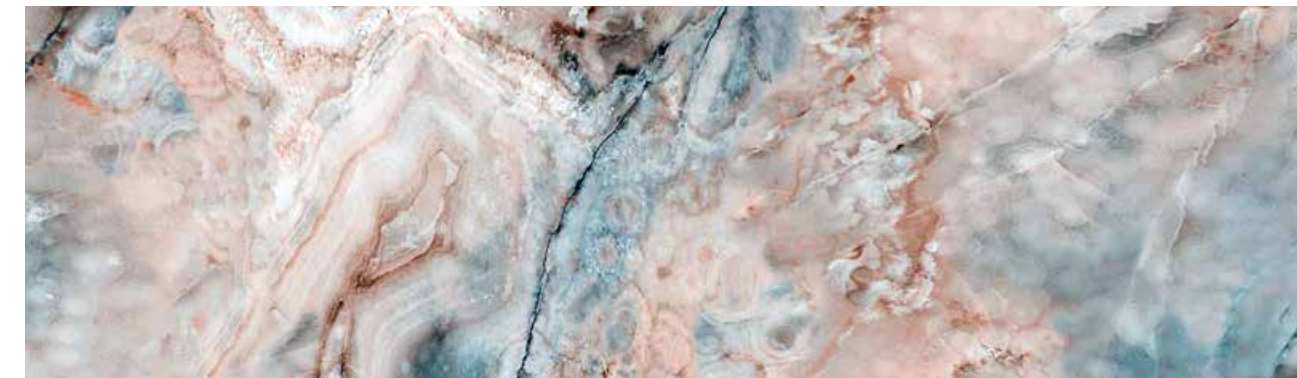
The Archer Hotel is located in the heart of The Domain. The Domain features 100 upscale and mainstream retail stores and restaurants, almost half of which are exclusive within the market. The hotel itself has 33,177 sqft of retail space. The hotel features a chef-driven restaurant, full bar, and a variety of indoor and outdoor dining experiences. A signature element of the hotel is a two-story lobby with a stone spiral staircase, centered around a crystal chandelier, leading up to a pre-function space overlooking the lobby and restaurant.

LOCATION: Austin, Texas

ARCHITECT: Law Kingdon Architecture



Archer Hotel, Pool Patio | Austin, TX | BF Series BF100



Hotel Bel Air, Dining Room | Los Angeles, CA | © View C520ST



Hotel Bel Air, Lounge | Los Angeles, CA | © View C4W4x4



Hotel Bel Air

Old Hollywood Glamour

A hidden sanctuary amongst the wooded hills, untouched by the clamour of life beyond the gates of Bel-Air. The most quintessentially private and exclusive hotel, delivering low-key elegance since 1946.

The birthplace of the Bel-Air community – LA's ultimate enclave of rarified exclusivity – Hotel Bel-Air has been the legendary setting for countless Hollywood moments.

LOCATION: Los Angeles, California

ARCHITECT: David Rockwell

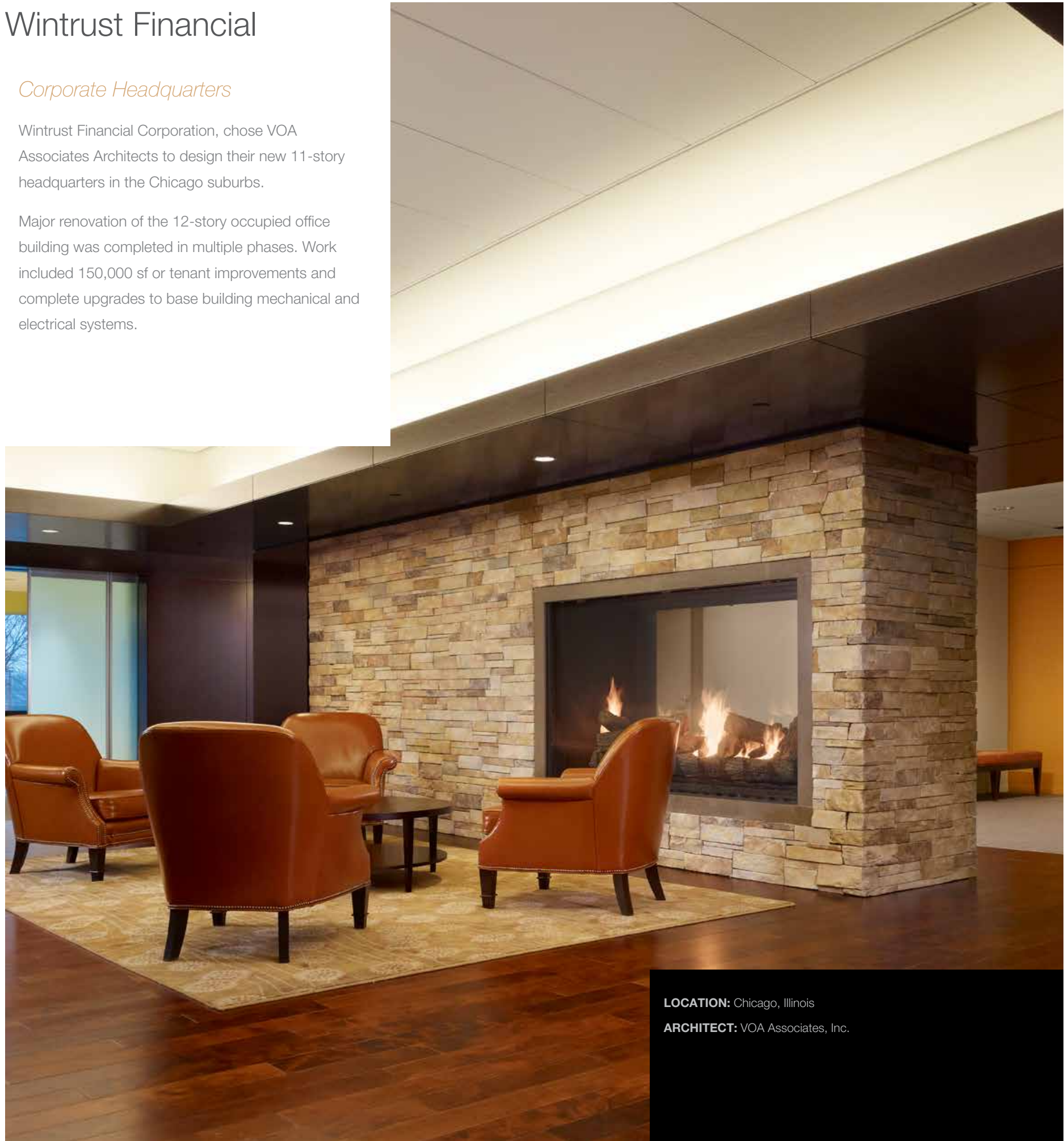
Wintrust Financial

Corporate Headquarters

Wintrust Financial Corporation, chose VOA Associates Architects to design their new 11-story headquarters in the Chicago suburbs.

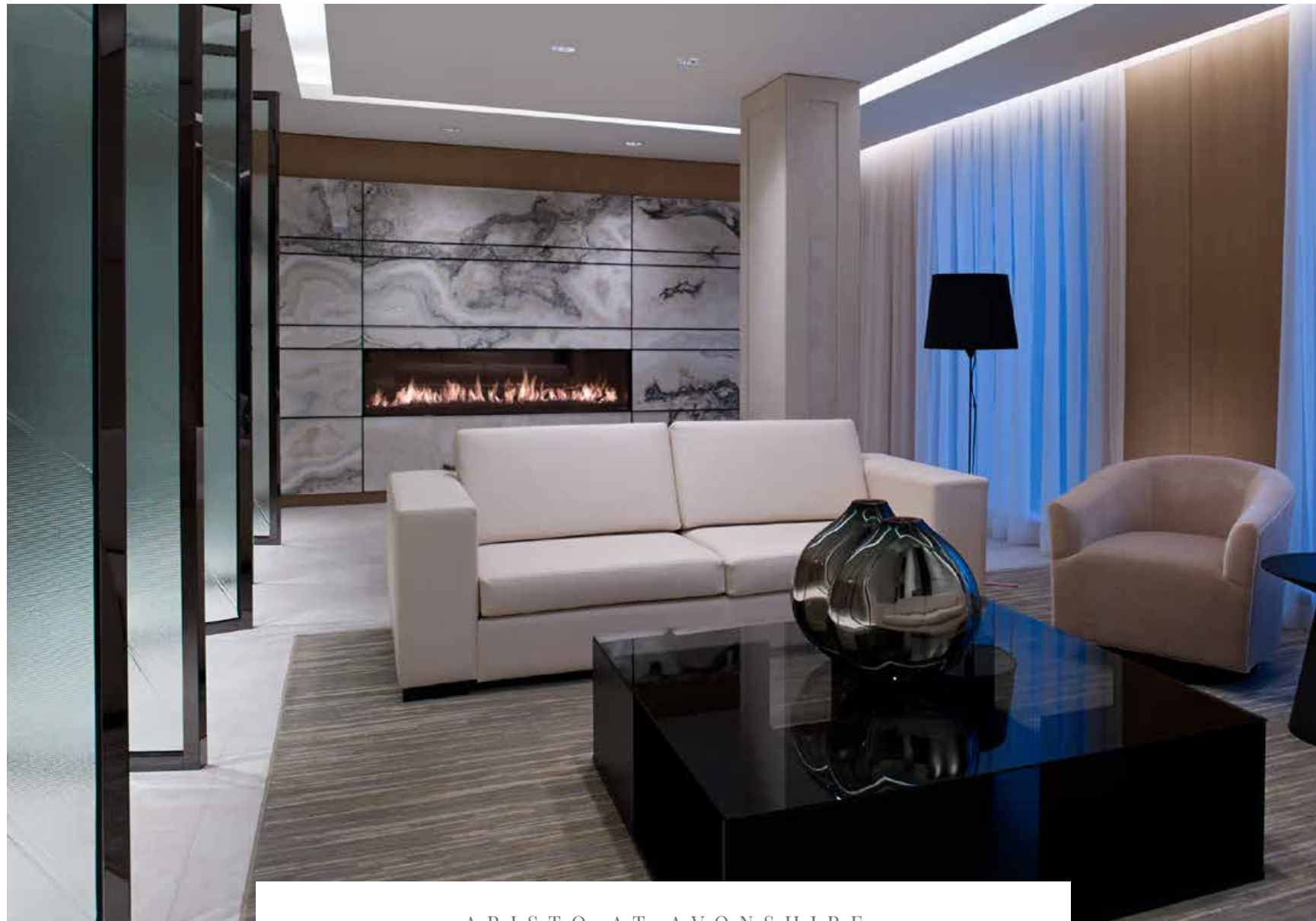
Major renovation of the 12-story occupied office building was completed in multiple phases. Work included 150,000 sf of tenant improvements and complete upgrades to base building mechanical and electrical systems.

Wintrust Financial | Chicago, IL | BF Series BF100STIO



LOCATION: Chicago, Illinois

ARCHITECT: VOA Associates, Inc.

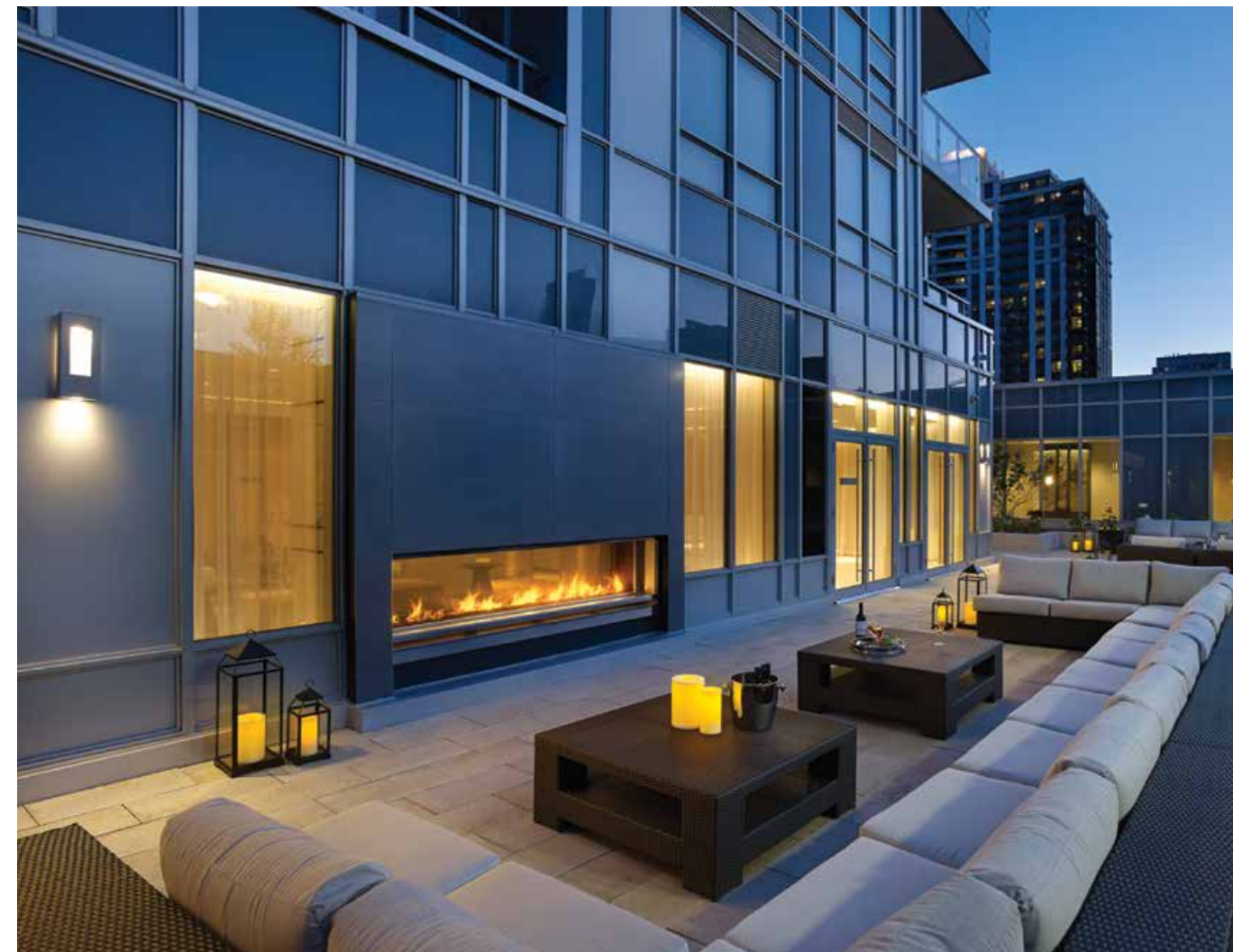


ARISTO AT AVONSHIRE

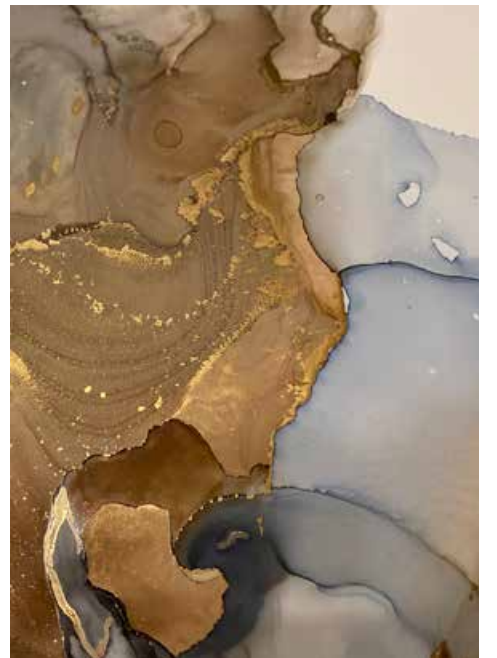
Aristo at Avonshire, Lobby | Toronto, ON | C View C620



Aristo at Avonshire, Lounge | Toronto, ON | C View C820ST10



Aristo at Avonshire, Patio | Toronto, ON | C View C820ST10



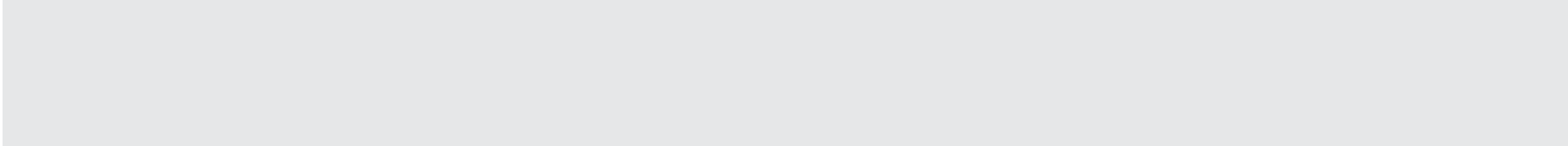
Modern Elegance

A fusion of sleek design and modern day conveniences, Aristo is the newest of three towers at Tridel's Avonshire community, located in North York, Toronto. Featuring abundant green spaces, an eco-friendly central park, and tree-lined promenades, Aristo at Avonshire is an energy efficient and environmentally friendly residential development pursuing LEED certification from Canada's Green Building Council.

LOCATION: Toronto, ON

ARCHITECT: Kirkor Architects & Planners

DESIGNER: Munge Leung Design Associates



Dakota Dunes, Lobby | Saskatoon, SK | C View Round CR430

Dakota Dunes

Authentic Indigenous Experience

A place where earth, sky, water, and air meet – the Dakota Dunes Resort & Casino.

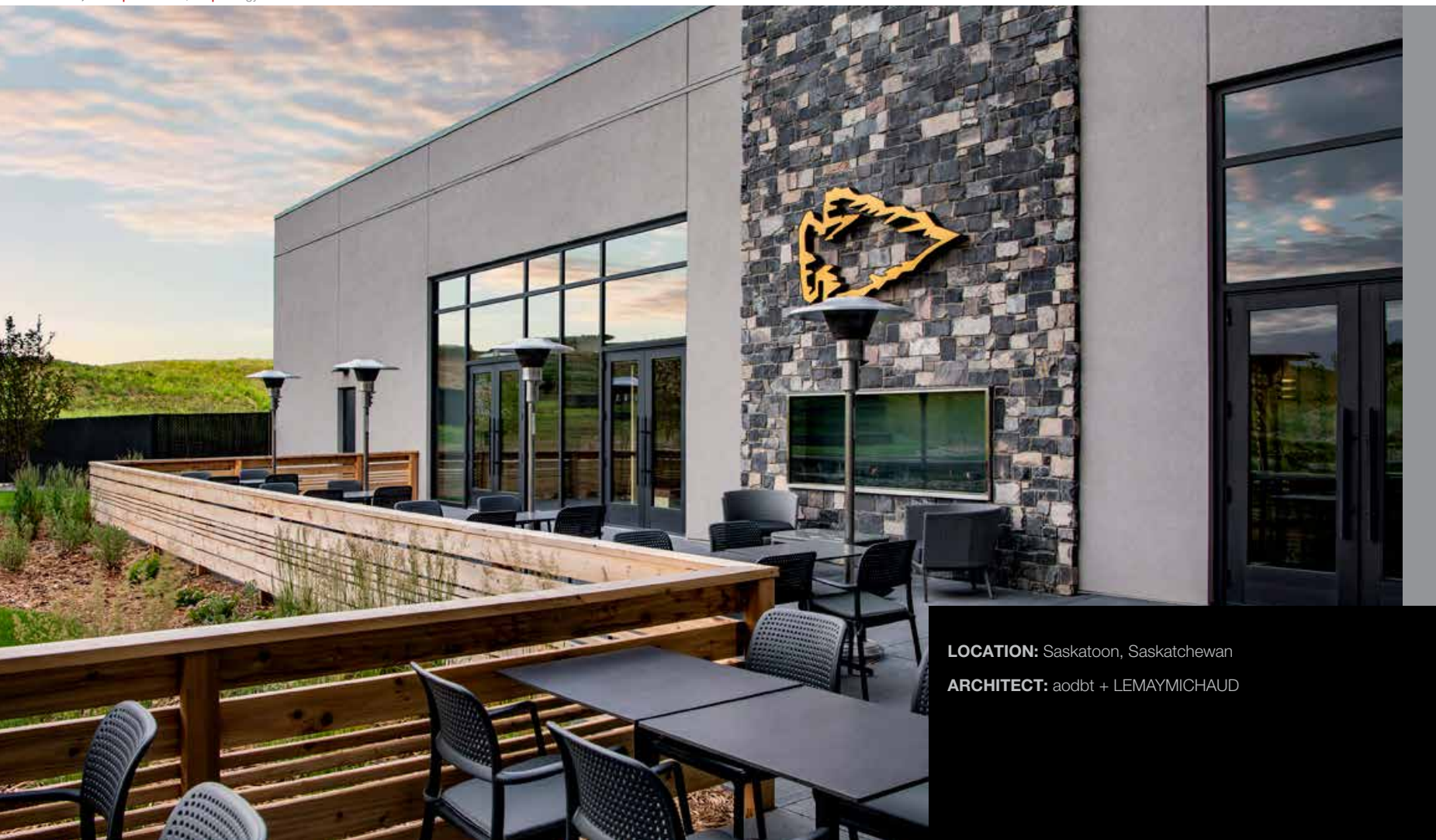
Dakota Dunes is a premier resort located on historical Whitecap Dakota First Nation lands, a short 20 minute drive from downtown Saskatoon, SK. This stunning resort destination features 155 rooms, 10,000 sq. ft. of meeting and conference space, and an on-site restaurant featuring a rich farm-to-table menu. With an award-winning 18-hole golf course and 85,000 sq. ft. casino located nearby there are plenty of activities to keep a weary traveler busy.



Dakota Dunes, Dining Room | Saskatoon, SK | Prodigy Series PCST836 ST10



Dakota Dunes, Patio | Saskatoon, SK | Prodigy Series PCST836 ST10



LOCATION: Saskatoon, Saskatchewan
ARCHITECT: aodbt + LEMAYMICHAUD



**LUXURY
HOMES**

Custom
commercial



Flour Mill Lofts | Denver, CO | C View C520CR



Wilshire Boulevard, Beverly Hills | Los Angeles, CA | C View C620ST



Hillcrest Road, Beverly Hills | Los Angeles, CA | C View C920



△ St Regis, Penthouse | San Francisco, CA | C View G720ST ▽



Hillcrest Road, Beverly Hills | Los Angeles, CA | C View C1020

Cliffside Drive, Beverly Hills | Los Angeles, CA | BF Series BF52



Private Residence | Toronto, ON | C View C520ST



Wilshire Boulevard, Beverly Hills | Los Angeles, CA | C View C520ST



Foley Fiore, Central Park West | New York, NY | C View C420CL



**BF
SERIES**

Custom
commercial



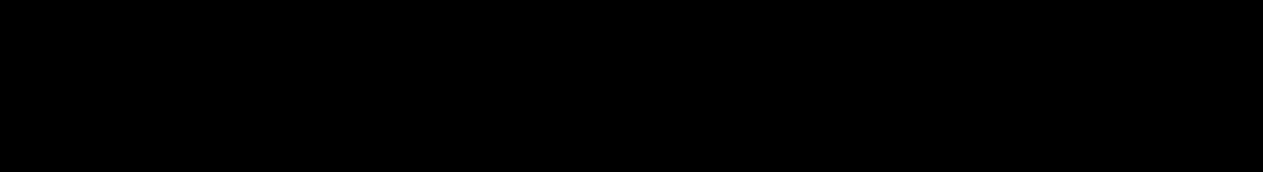
BF Series

the original “Big Fireplace” with traditional flair

Montigo’s BF Series can be customized with multiple burner styles, and almost limitless possibilities for intake and termination. The BF Series is a traditional style solution for commercial fireplace installations.

features

- Glass width and height is fully customizable to suit your project needs
- Units may be split to accommodate limited access points or in historic spaces
- Lowest glass temperatures in the industry with our patented COOL-Pack technology
- TV and artwork friendly, flexible finishing of wall due to low temperatures
- Black satin painted galvanized steel or full stainless steel construction
- Interior mesh liner available for ease of on-site masonry application
- Available for applications indoor, outdoor, or both
- Traditional logset burner style
- Power venting up to 500 feet with custom termination options available
- All systems are tested and certified to current ANSI Standards with CSA International US and Canada in Montigo’s on-site lab



Aeris Aviation Flight School | Sturtevant, WI | BF Series BF60



The Omni Grove Park Inn | Asheville, NC | BF Series BF60ST



Private Residence | Los Angeles, CA | BF Series BF52



Baldwin Harbor Apartments | Orlando, FL | BF Series BF60ST

single sided

GLASS DIMENSIONS CAN BE CUSTOMIZED	
Glass Width	36" - 84"
Glass Height	28" - 48"
Glass Type	5mm - 6mm tempered glass (standard) 8mm tempered glass (optional) Laminated safety glass standard on units > 96" tall
No Glass	Open units are available
Cool Touch	COOL-Pack, Power COOL-Pack
Intake	Bottom, front, rear, side, top
Power Vent	Montigo roof mount, wall mount, flush wall mount, or inline power vent, sized to specific system
Controls	Standalone custom control panel
Construction	Satin galvanized (black) or stainless steel
Burner	Raised burner with grate and ember bed
Media	Traditional logset
Options	Downlighting, lighting remote control, black reflective glass, decorative liners, masonry mesh

Visit montigo.com for detailed specifications for each model

BF SERIES



Private Residence | BF Series Open BF36



Gaylord Rockies Resort, Relâche Spa | Aurora, CO | BF Series BF52



Private Residence | Squamish, BC | BF Series Open BF36

see through

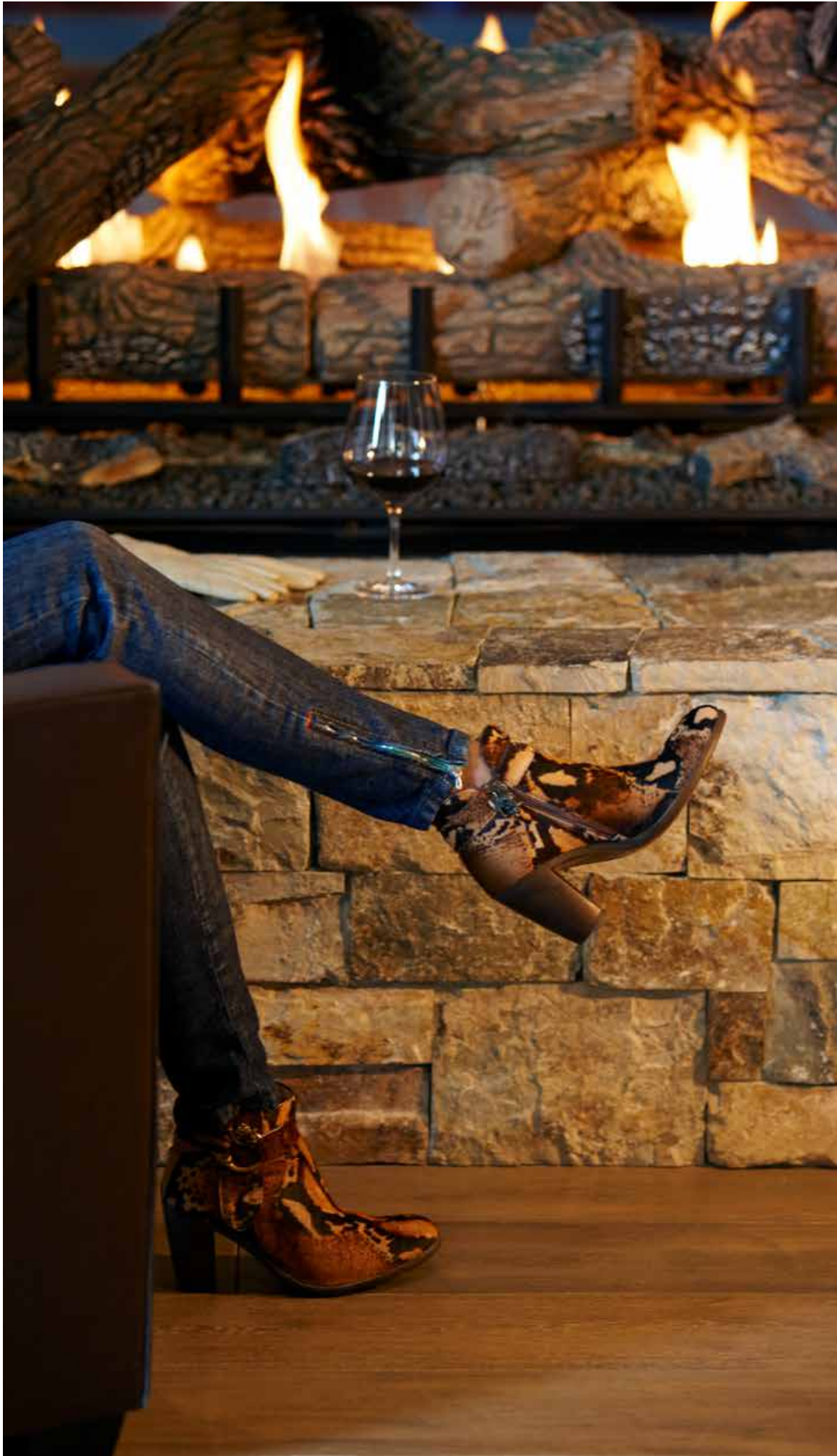
GLASS DIMENSIONS CAN BE CUSTOMIZED	
Glass Width	36" - 84"
Glass Height	28" - 48"
Glass Type	5mm - 6mm tempered glass (standard) 8mm tempered glass (optional) Laminated safety glass standard on units > 96" tall
No Glass	Open units are available
Cool Touch	COOL-Pack, Power COOL-Pack
Intake	Bottom, front, rear, side, top
Power Vent	Montigo roof mount, wall mount, flush wall mount, or inline power vent, sized to specific system
Controls	Standalone custom control panel
Construction	Satin galvanized (black) or stainless steel
Burner	Raised burner with grate and ember bed
Media	Traditional logset burner media
Options	Downlighting, lighting remote control, black reflective glass, decorative liners, masonry mesh

Visit montigo.com for detailed specifications for each model

BF SERIES



Hotel Westin Riverfront | Avon, CO | BF Series BF84ST



Pacific Beacon Apartments | San Diego, CA | BF Series BF48ST



Baldwin Harbor Apartments | Orlando, FL | BF Series BF60ST



**C VIEW
SERIES**



Custom
commercial

C View Series

the ultimate in flexible commercial grade fireplace solutions

With unlimited firebox configurations, multiple burner styles, and almost limitless possibilities for intake and termination, Montigo's C View sets the gold standard for commercial fireplace installations.

features

- Glass width and height is fully customizable to suit your project needs
- Units may be split to accommodate limited access points or in historic spaces
- Lowest glass temperatures in the industry with our patented COOL-Pack technology
- TV and artwork friendly, flexible finishing of wall due to low temperatures
- Black satin painted galvanized steel or full stainless steel construction
- Available for applications indoor, outdoor, or both
- Concealed ribbon or high-low burner style
- Power venting with unlimited runs and custom termination options available
- All systems are tested and certified to current ANSI Standards with CSA International US and Canada in Montigo's on-site lab

St. Regis Hotel | San Francisco, CA | C View C620ST



Casino Coeur d'Alene Hotel | Worley, ID | C View C1620



Shangri La Hotel | Toronto, ON | C View C1020



single sided

GLASS DIMENSIONS CAN BE CUSTOMIZED	
Glass Width	36" - 180"
Glass Height	20"
Glass Type	5mm - 6mm tempered glass (standard) 8mm tempered glass (optional) Laminated safety glass standard on units > 96" tall
No Glass	Open units are available
Cool Touch	COOL-Pack, Power COOL-Pack
Intake	Bottom, front, rear, side, top
Power Vent	Montigo roof mount, wall mount, flush wall mount, or inline power vent, sized to specific system
Controls	Standalone custom control panel
Construction	Satin galvanized (black) or stainless steel
Burner	Concealed burner with 8" ribbon flame or 16" high-low flame
Media	Glass media, driftwood logset, ceramic stones
Options	Uplighting, downlighting, lighting remote control, black reflective glass, decorative liners, custom logo/artwork *

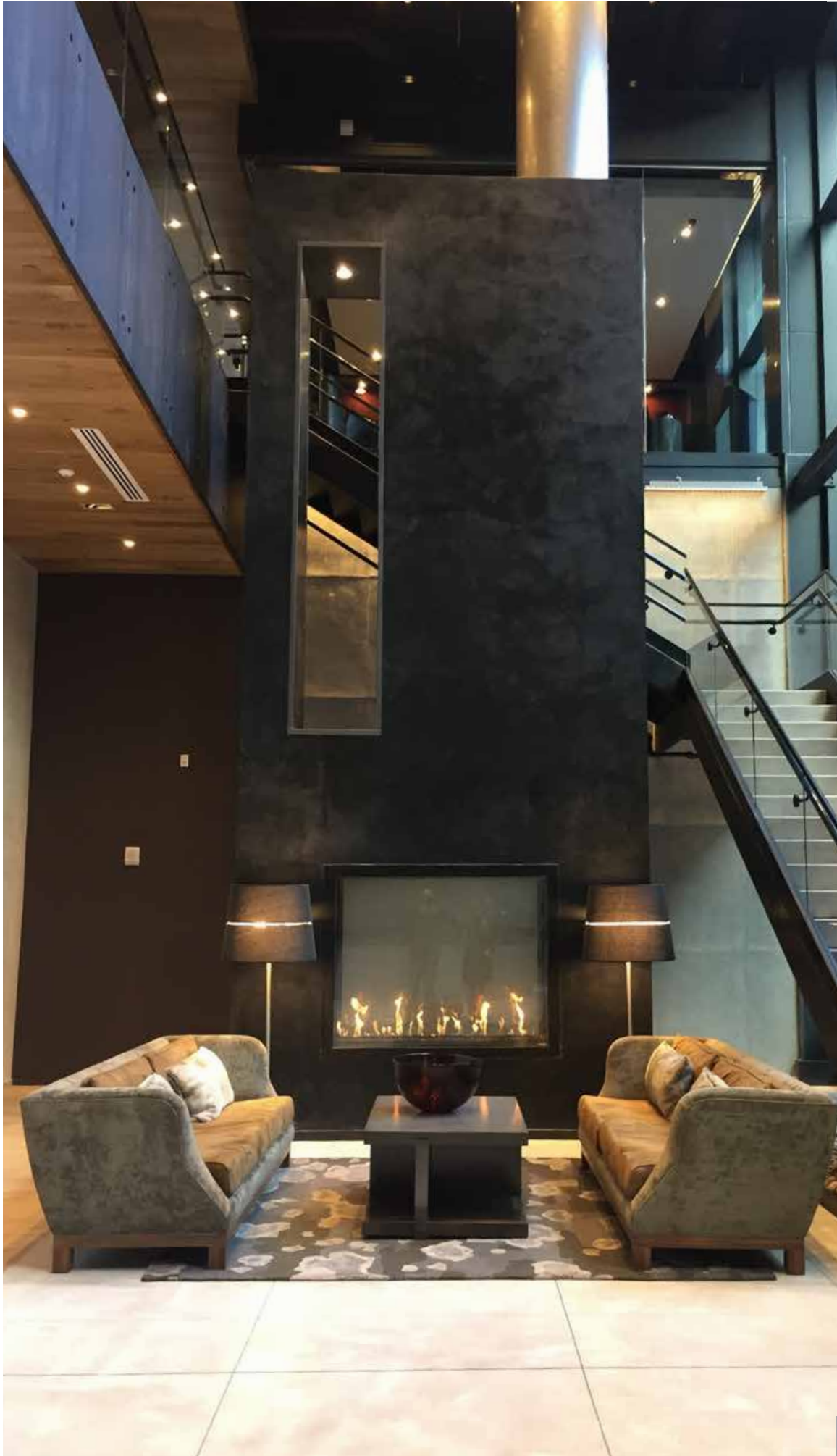
*Inquire on your specific project

Visit montigo.com for detailed specifications for each model

C VIEW



Private Residence | San Francisco, CA | C View C520



Monarc Met3 Apartments | Miami, FL | C View C620



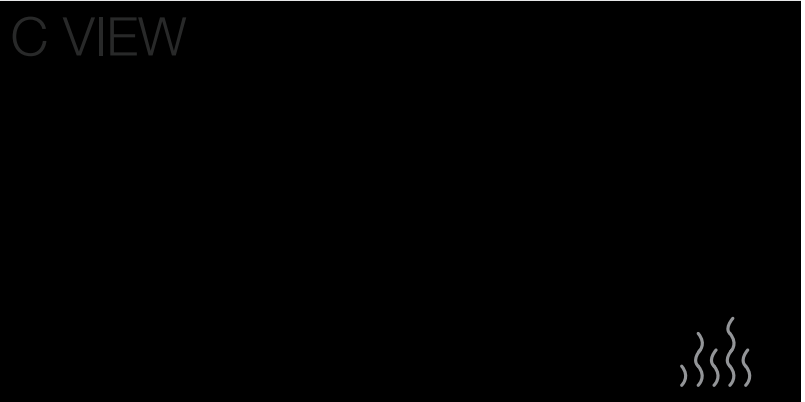
Hyatt Regency Hotel | Palm Springs, CA | C View C1620



see through

GLASS DIMENSIONS CAN BE CUSTOMIZED	
Glass Width	36" - 180"
Glass Height	20"
Glass Type	5mm - 6mm tempered glass (standard) 8mm tempered glass (optional) Laminated safety glass standard on units > 96" tall
No Glass	Open units are available
Cool Touch	COOL-Pack, Power COOL-Pack
Intake	Bottom, front, rear, side, top
Power Vent	Montigo roof mount, wall mount, flush wall mount, or inline power vent, sized to specific system
Controls	Standalone custom control panel
Construction	Satin galvanized (black) or stainless steel
Burner	Concealed burner with 8" ribbon flame or 16" high-low flame
Media	Glass media, driftwood logset, ceramic stones
Options	Uplighting, downlighting, lighting remote control, black reflective glass, privacy glass

Visit montigo.com for detailed specifications for each model



Hotel Kimpton Aertson | Nashville, TN | C View C620ST



Reve King West Apartments | Toronto, ON | C View C520ST



Inspir Maplewood Senior Living | New York, NY | C View C520ST



corner left / right

GLASS DIMENSIONS CAN BE CUSTOMIZED	
Glass Width	36" - 180" x 18" Deep
Glass Height	20"
Glass Type	5mm - 6mm tempered glass (standard) 8mm tempered glass (optional) Laminated safety glass standard on units > 96" tall
No Glass	Open units are available
Cool Touch	COOL-Pack, Power COOL-Pack
Intake	Bottom, rear, side, top
Power Vent	Montigo roof mount, wall mount, flush wall mount, or inline power vent, sized to specific system
Controls	Standalone custom control panel
Construction	Satin galvanized (black) or stainless steel
Burner	Concealed burner with 8" ribbon flame or 16" high-low flame
Media	Glass media, driftwood logset, ceramic stones
Options	Uplighting, downlighting, lighting remote control, black reflective glass, decorative liners, custom logo/artwork *

*Inquire on your specific project

Visit montigo.com for detailed specifications for each model

C VIEW



Republic of Yonge & Eglinton | Toronto, ON | C View C720CL



Foley Fiore Central Park West | New York, NY | C View C420CL



399 Freemont Apartments | San Francisco, CA | C View C620CR



bay

GLASS DIMENSIONS CAN BE CUSTOMIZED	
Glass Width	43" - 187" x 18" Deep
Glass Height	20"
Glass Type	5mm - 6mm tempered glass (standard) 8mm tempered glass (optional) Laminated safety glass standard on units > 96" tall
No Glass	Open units are available
Cool Touch	COOL-Pack, Power COOL-Pack
Intake	Bottom, front, rear, top
Power Vent	Montigo roof mount, wall mount, flush wall mount, or inline power vent, sized to specific system
Controls	Standalone custom control panel
Construction	Satin galvanized (black) or stainless steel
Burner	Concealed burner with 8" ribbon flame or 16" high-low flame
Media	Glass media, driftwood logset, ceramic stones
Options	Uplighting, downlighting, lighting remote control, black reflective glass

Visit montigo.com for detailed specifications for each model

C VIEW



Frolik at Motif, Red Lion Hotel | Seattle, WA | C View C1220PRC



One Madison Condominiums, Parlor | New York, NY | C View C820PRC



Frolik at Motif, Red Lion Hotel | Seattle, WA | C View C1220PRC



pier

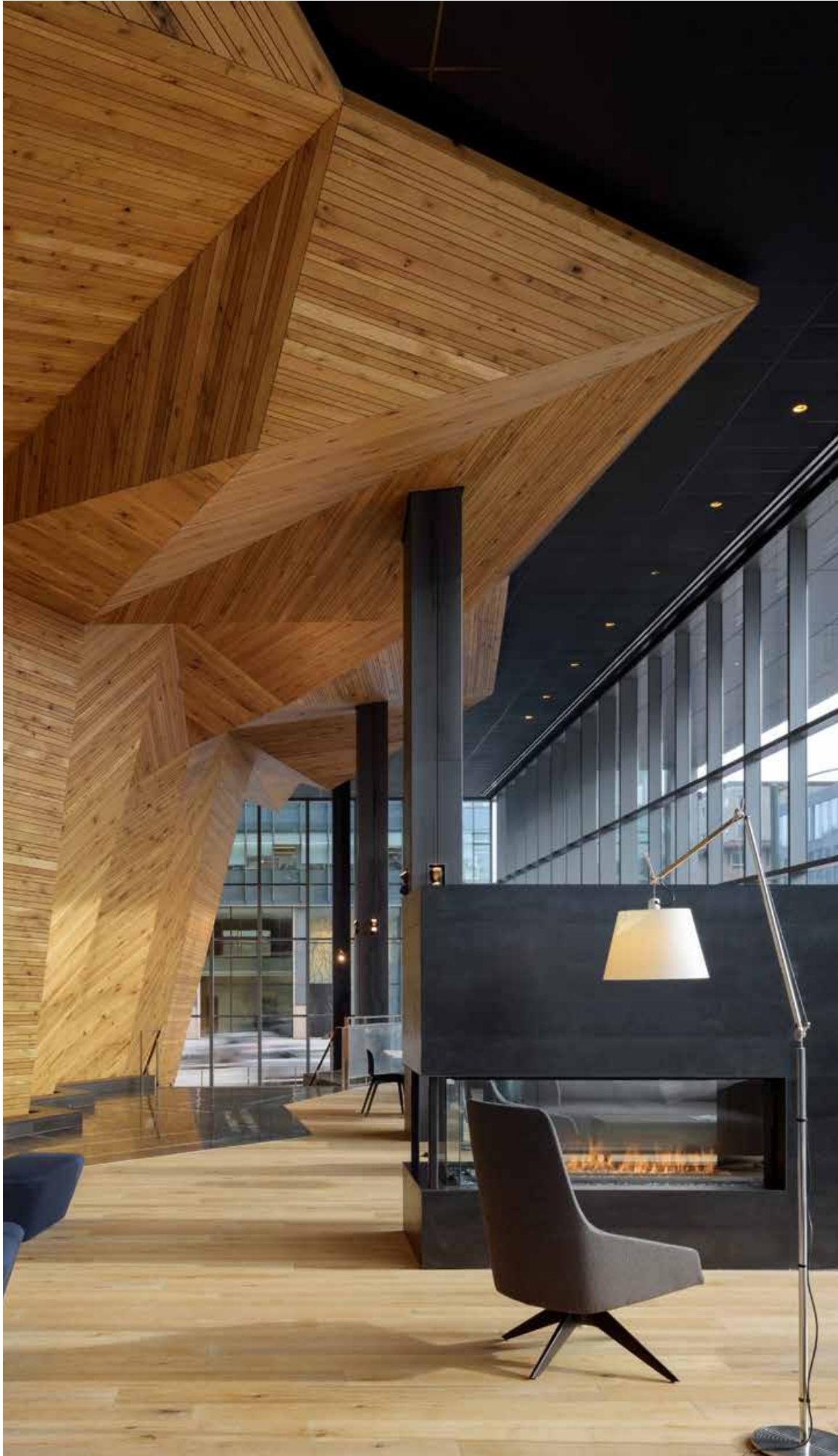
GLASS DIMENSIONS CAN BE CUSTOMIZED	
Glass Width	36" - 108" x 24" - 36" Deep
Glass Height	24"
Glass Type	5mm - 6mm tempered glass (standard) 8mm tempered glass (optional) Laminated safety glass standard on units > 96" tall
No Glass	Open units are available
Cool Touch	COOL-Pack, Power COOL-Pack
Intake	Bottom, rear, top
Power Vent	Montigo roof mount, wall mount, flush wall mount, or inline power vent, sized to specific system
Controls	Standalone custom control panel
Construction	Satin galvanized (black) or stainless steel
Burner	Concealed burner with 8" ribbon flame or 16" high-low flame
Media	Glass media, driftwood logset, ceramic stones
Options	Uplighting, downlighting, lighting remote control, black reflective glass

Visit montigo.com for detailed specifications for each model

C VIEW



Urban Union | Seattle, WA | C View C820PFC



50 United Nations Plaza | New York, NY | C View C920PFC



Tulalip Casino Resort | Tulalip, WA | C View C820PFC



four sided

GLASS DIMENSIONS CAN BE CUSTOMIZED	
Glass Width	36" - 180"
Glass Height	24"
Glass Type	5mm - 6mm tempered glass (standard) 8mm tempered glass (optional) Laminated safety glass standard on units > 96" tall
No Glass	Open units are available
Cool Touch	COOL-Pack, Power COOL-Pack
Intake	Bottom, top
Power Vent	Montigo roof mount, wall mount, flush wall mount, or inline power vent, sized to specific system
Controls	Standalone custom control panel
Construction	Satin galvanized (black) or stainless steel
Burner	Concealed burner with 8" ribbon flame or 16" high-low flame
Media	Campfire logset, glass media, driftwood logset, ceramic stones
Options	Uplighting, downlighting, lighting remote control, available in post and post-less configurations

Visit montigo.com for detailed specifications for each model

C VIEW



Hotel Parkside Resort | Victoria, BC | C View C4W11



One Madison Condominiums, Lounge | New York, NY | C View C4W11



One Main Place | Portland, OR | C View C4W11

round

GLASS DIMENSIONS CAN BE CUSTOMIZED	
Glass Width	48"
Glass Height	30" - 36"
Glass Type	5mm - 6mm tempered glass (standard) 8mm tempered glass (optional) Laminated safety glass standard on units > 96" tall
No Glass	Open units are available
Cool Touch	COOL-Pack, Power COOL-Pack
Intake	Bottom, top
Power Vent	Montigo roof mount, wall mount, flush wall mount, or inline power vent, sized to specific system
Controls	Standalone custom control panel
Construction	Satin galvanized (black) or stainless steel
Burner	Concealed burner with 8" ribbon flame or 16" high-low flame, stacked, plume, campfire
Media	Campfire logset, glass media, driftwood logset, ceramic stones
Options	Uplighting, downlighting, lighting remote control, available in post and post-less configurations

Visit montigo.com for detailed specifications for each model

C VIEW



Private Residence | Vancouver, BC | C View CR448



Dakota Dunes Casino Resort | Saskatoon, SK | C View CR430



Private Residence | Seattle, WA | C View CR430

octagon

GLASS DIMENSIONS CAN BE CUSTOMIZED	
Glass Width	48"
Glass Height	30" - 36"
Glass Type	5mm - 6mm tempered glass (standard) 8mm tempered glass (optional) Laminated safety glass standard on units > 96" tall
No Glass	Open units are available
Cool Touch	COOL-Pack, Power COOL-Pack
Intake	Bottom, top
Power Vent	Montigo roof mount, wall mount, flush wall mount, or inline power vent, sized to specific system
Controls	Standalone custom control panel
Construction	Satin galvanized (black) or stainless steel
Burner	Concealed burner with 8" ribbon flame or 16" high-low flame, stacked, plume
Media	Campfire logset, glass media, driftwood logset, ceramic stones
Options	Uplighting, downlighting, lighting remote control, available in post and post-less configurations

Visit montigo.com for detailed specifications for each model

C VIEW



Highgate at the Mile | Tysons, VA | C View Octagon C820



Private Residence, Living Room | Miami, FL | Tornado T260STIO



Private Residence, Patio | Miami, FL | Tornado T260STIO

tornado

GLASS DIMENSIONS CAN BE CUSTOMIZED	
Configurations	Single sided, see through, four sided
Glass Width	24 - 36"
Glass Height	60"
Glass Type	5mm - 6mm tempered glass (standard) 8mm tempered glass (optional) Laminated safety glass standard on units > 96" tall
No Glass	Open units are available
Cool Touch	COOL-Pack, Power COOL-Pack
Intake	Botton, rear, side, top, based on configuration
Power Vent	Montigo roof mount, wall mount, flush wall mount, or inline power vent, sized to specific system
Controls	Standalone custom control panel
Construction	Satin galvanized (black) or stainless steel
Burner	Tornado burner
Media	Glass media
Options	Uplighting, downlighting, lighting remote control, black reflective glass, decorative liners, custom logo/artwork [†]

[†]Inquire on your specific project

Visit montigo.com for detailed specifications for each model

C VIEW

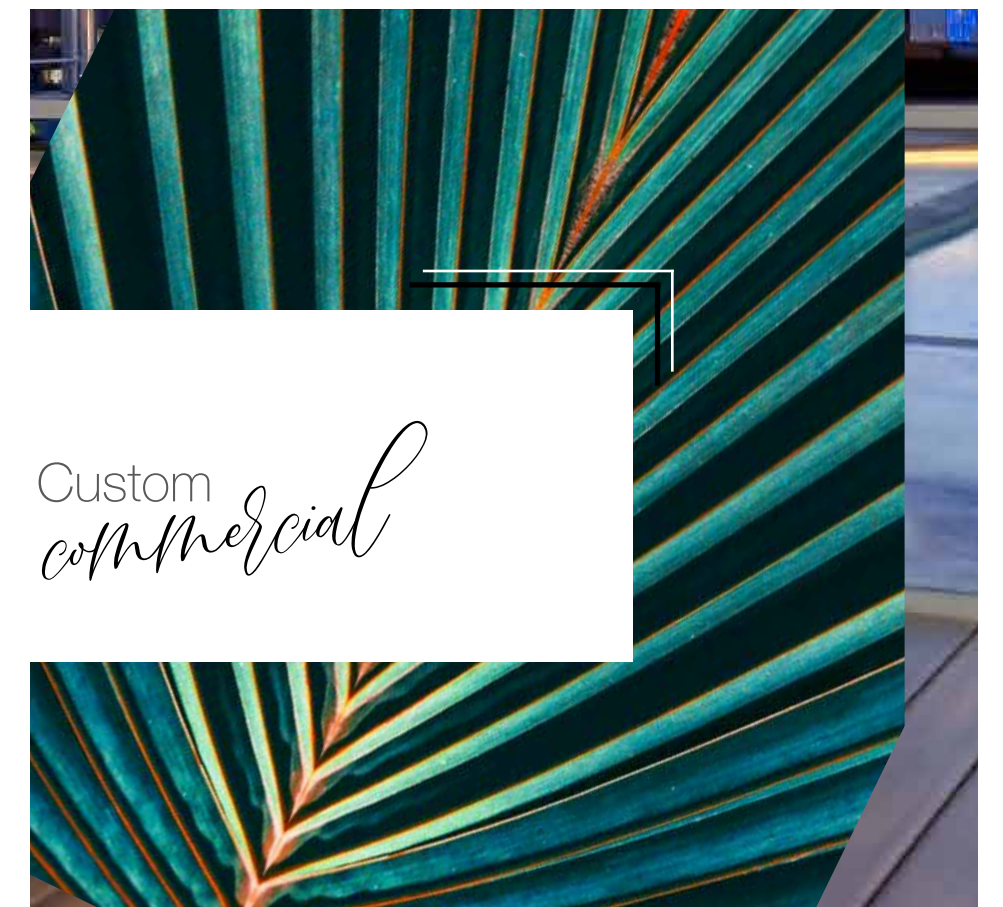




**OUTDOOR
SERIES**

Custom
commercial

Sterling Apartments, Rooftop Patio | Philadelphia, PA | Firepit CFPO4



in/outdoor STIO

GLASS DIMENSIONS CAN BE CUSTOMIZED	
Glass Width	36" - 180"
Glass Height	20"
Glass Type	5mm - 6mm tempered glass (standard) 8mm tempered glass (optional) Laminated safety glass standard on units > 96" tall
No Glass	Open units are available
Cool Touch	Power COOL-Pack
Intake	Front, below glass
Power Vent	Integrally built into the system
Controls	Standalone custom control panel
Construction	Full stainless steel
Burner	Concealed burner with 8" ribbon flame or 16" high-low flame
Media	Glass media, driftwood logset, ceramic stones
Options	Uplighting, downlighting, lighting remote control, black reflective glass, privacy glass

Visit montigo.com for detailed specifications for each model

SEE THROUGH
INDOOR OUTDOOR



Glowbal, Dining Room | Vancouver, BC | C View C620STIO



Aristo at Avonshire, Lounge | Toronto, ON | C View C820STIO



Aristo at Avonshire, Patio | Toronto, ON | C View C820STIO

in/outdoor STIO

GLASS DIMENSIONS CAN BE CUSTOMIZED

Glass Width	36" - 180"
Glass Height	20"
Glass Type	5mm - 6mm tempered glass (standard) 8mm tempered glass (optional) Laminated safety glass standard on units > 96" tall
No Glass	Open units are available
Cool Touch	Power COOL-Pack
Intake	Front, below glass
Power Vent	Integrally built into the system
Controls	Standalone custom control panel
Construction	Full stainless steel
Burner	Concealed burner with 8" ribbon flame or 16" high-low flame
Media	Glass media, driftwood logset, ceramic stones
Options	Uplighting, downlighting, lighting remote control, black reflective glass, privacy glass

Visit montigo.com for detailed specifications for each model

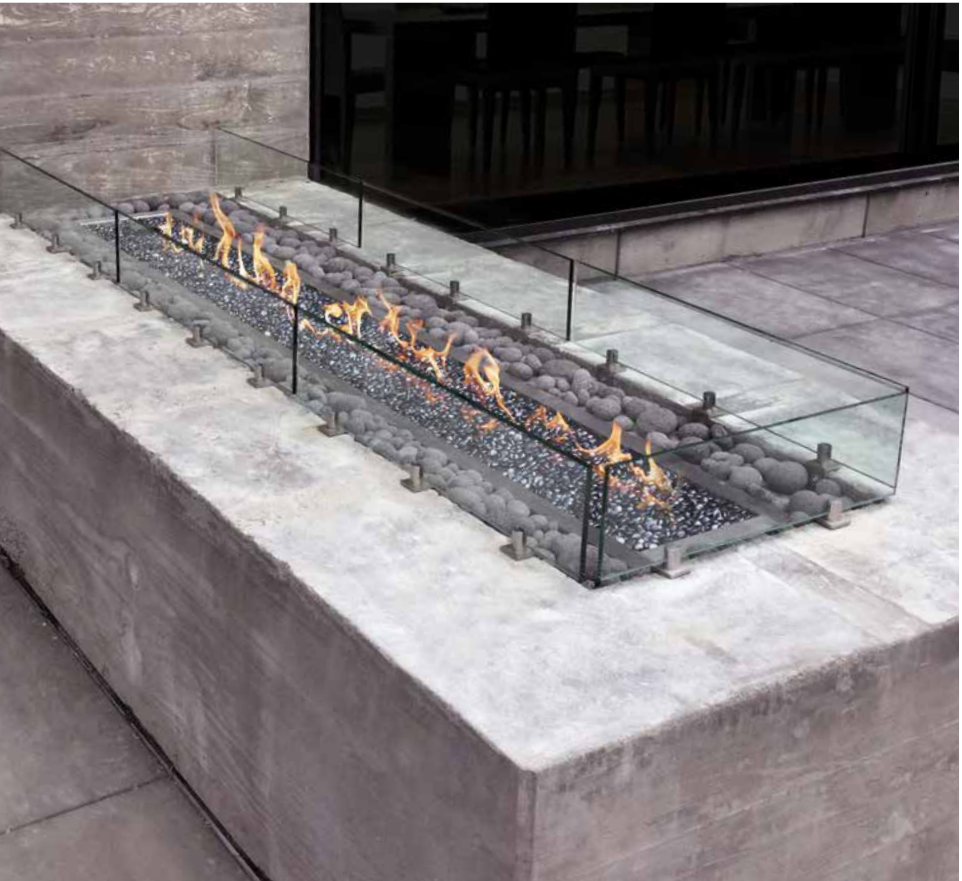
SEE THROUGH
INDOOR OUTDOOR



Solari, Patio | New York, NY | C View C8200DD



Amli Apartments | Seattle, WA | Firepit CFPO-8



linear firepit

DIMENSIONS CAN BE CUSTOMIZED

Burner Area	24 1/8" - 168 1/8" x 12"
Barriers & Screens	Single or double protective glass [†] Protective mesh enclosure [‡] Note: Unit dimensions will increase when single/double glass is requested. Please inquire as to actual size.
Intake	Bottom
Exhaust	Unvented outdoor appliance
Construction	Stainless steel or satin galvanized (black) [†] , delivered rough finished, ready to clad; supplied locally by others
Burner	Concealed burner with ribbon flame
Media	Glass media

[†] May be available, please inquire on your specific project, waiver required
[‡] Option can be used when the firepit is in a protected or covered location

Visit montigo.com for detailed specifications for each model

FIREPIT



Hotel Kimpton Aertson, Patio | Nashville, TN | Firepit CFPO-3



round firepit

DIMENSIONS CAN BE CUSTOMIZED	
Burner Area	24" - 48" Dia.
Barriers & Screens	Single or double protective glass † Protective mesh enclosure † Note: Unit dimensions will increase when single/double glass is requested. Please inquire as to actual size.
Intake	Bottom
Exhaust	Unvented outdoor appliance
Construction	Stainless steel or satin galvanized (black)†, delivered rough finished, ready to clad
Burner	Concealed modular burner with plume flame
Media	Glass media Optional: Driftwood logs, speckled stones, campfire logset

† May be available, please inquire on your specific project, waiver required
‡ Option can be used when the firepit is in a protected or covered location

Hedy's Rooftop, Hotel Zena | Washington, DC | Firepit CFPO-RD-48-TB-DL-MS



Hedy's Rooftop, Hotel Zena | Washington, DC | Firepit CFPO-RD-48-TB-DL-MS

Private Residence | Firepit CFPO-SQ-24



Private Residence | Firepit CFPO-SQ-24

square firepit

DIMENSIONS CAN BE CUSTOMIZED	
Burner Area	24" x 24" - 48" x 48"
Barriers & Screens	Single or double protective glass † Protective mesh enclosure † Note: Unit dimensions will increase when single/double glass is requested. Please inquire as to actual size.
Intake	Bottom
Exhaust	Unvented outdoor appliance
Construction	Stainless steel or satin galvanized (black)†, delivered rough finished, ready to clad
Burner	Concealed modular burner with plume flame
Media	Glass media Optional: Driftwood logs, speckled stones

† May be available, please inquire on your specific project, waiver required
‡ Option can be used when the firepit is in a protected or covered location

Visit montigo.com for detailed specifications for each model

FIREPIT



FIREPIT





PRODIGY SERIES

Light
commercial

Prodigy Series

flexible and commercial grade for light-duty applications.

The Prodigy's clean contemporary lines and frameless double glass design deliver breathtaking aesthetics. Finishing materials can be attached directly to the fireplace and brought down to the edge of the glass creating a stunning focal point without interruption.

features

- Multiple glass widths and heights to meet your project needs
- COOL-Pack technology for cool-touch safety
- Glass temperatures as low as 125°F
- TV and artwork friendly, flexible finishing of wall due to low temperatures
- Multi-color LED uplighting
- Up to 15,000 BTU/HR per linear foot
- Concealed ribbon or high-low burner style
- Natural gas or propane
- Black satin painted galvanized steel construction
- Customizable media options
- Electronic ignition — no standing pilot
- Compatible with home automation systems
- Combustion air or flue gas vent runs up to 80' with 7 elbows, or linear equivalent

Private Residence | Prodigy PCOR720



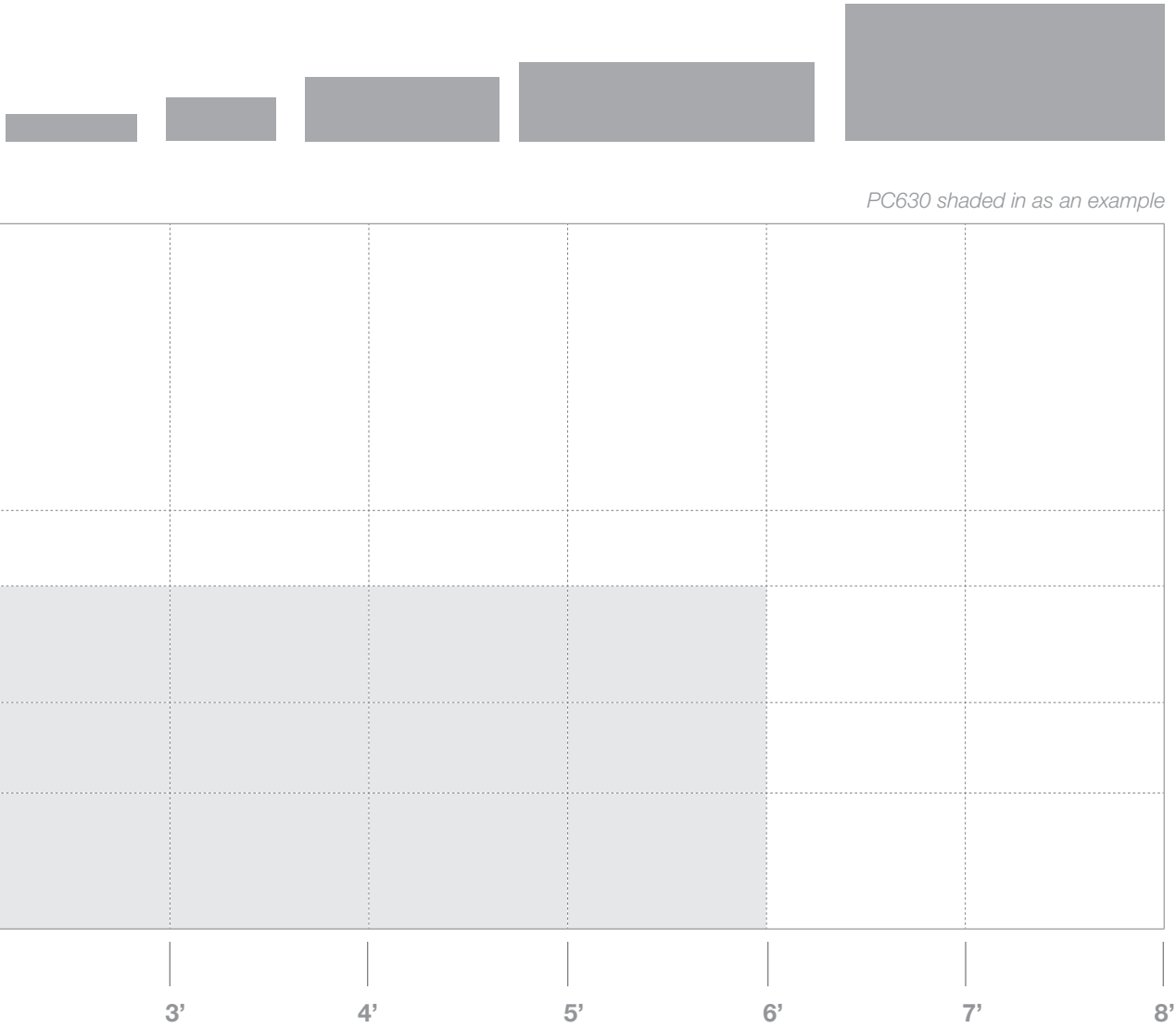
Alexan Lower Greenville Apartments, Gamesroom | Dallas, TX | Prodigy PCST820



Private Residence | Prodigy PCST536



Unit Configurations



single sided

Glass Width	36" - 96"
Glass Height	12" - 60"
Glass Type	10mm tempered glass
Cool Touch	COOL-Pack
Intake	Top
Power Vent	Montigo roof mount, wall mount, or inline power vent
Controls	Commercial grade valve, burner and control system
Construction	Black satin galvanized steel
Burner	Concealed burner with 8" ribbon flame or 16" high-low flame
Media	Glass media, driftwood logset, ceramic stones
Lighting	LED uplighting
Options	Lighting remote control, black reflective glass, decorative liners

Visit montigo.com for detailed specifications for each model

PRODIGY



Private Residence | Prodigy PC436



Private Residence | Prodigy PC620



Alexan Lower Greenville Apartments, Club Room | Dallas, TX | Prodigy PCST820

see through

Glass Width	36" - 96"
Glass Height	12" - 60"
Glass Type	10mm tempered glass
Cool Touch	COOL-Pack
Intake	Top
Power Vent	Montigo roof mount, wall mount, or inline power vent
Controls	Commercial grade valve, burner and control system
Construction	Black satin galvanized steel
Burner	Concealed burner with 8" ribbon flame or 16" high-low flame
Media	Glass media, driftwood logset, ceramic stones
Lighting	LED uplighting
Options	Lighting remote control, black reflective glass, decorative liners, indoor/outdoor sealing kit

Visit montigo.com for detailed specifications for each model

PRODIGY



Private Residence | Prodigy PCST536



Private Residence | Prodigy PCST860



Private Residence | Prodigy PCST420



corner left / right

Glass Width	43 1/2" - 103 1/2" x 13 1/8" Deep
Glass Height	12" - 60"
Glass Type	10mm tempered glass
Cool Touch	COOL-Pack
Intake	Top
Power Vent	Montigo roof mount, wall mount, or inline power vent
Controls	Commercial grade valve, burner and control system
Construction	Black satin galvanized steel
Burner	Concealed burner with 8" ribbon flame or 16" high-low flame
Media	Glass media, driftwood logset, ceramic stones
Lighting	LED uplighting
Options	Lighting remote control, black reflective glass, decorative liners, indoor/outdoor sealing kit

Visit montigo.com for detailed specifications for each model

PRODIGY



Private Residence | Prodigy PCCR420



Private Residence | Prodigy PCCR720



Private Residence | Prodigy PCCL520



bay

Glass Width	39 1/2" - 99 1/2" x 13 1/8" Deep
Glass Height	12" - 60"
Glass Type	10mm tempered glass
Cool Touch	COOL-Pack
Intake	Top
Power Vent	Montigo roof mount, wall mount, or inline power vent
Controls	Commercial grade valve, burner and control system
Construction	Black satin galvanized steel
Burner	Concealed burner with 8" ribbon flame or 16" high-low flame
Media	Glass media, driftwood logset, ceramic stones
Lighting	LED uplighting
Options	Lighting remote control, black reflective glass, decorative liners, indoor/outdoor sealing kit

Visit montigo.com for detailed specifications for each model

PRODIGY



Private Residence | Prodigy PCPR430



Private Residence | Prodigy PCPR720



Private Residence | Prodigy PCPR820

