

## Proflame 2 Remote Kit

# MONTIGO®

Upgrade Kit NG/LP Proflame 2 Standard to Remote Control

This kit is for use with the following models:

H\*34\*\*-F : H\*34 Series with IPI Electronic Ignition

H\*38\*\*-F : H\*38 Series with IPI Electronic Ignition

H\*42\*\*-F : H\*42 Series with IPI Electronic Ignition

L38-DF(-ST)-F : L38DF with IPI Electronic Ignition

L42-DF(-ST)-F : L42DF with IPI Electronic Ignition

L52-DF(-ST)-F : L52DF with IPI Electronic Ignition

\* = C, L, P, R, W

\*\* = DF or DL, Single Sided or See Through



- The installation of this kit must be done by a qualified and certified gas appliance installer.
- Check local codes and read all instructions prior to installation.

### ⚠ CAUTION

Ensure that all power to the appliance is off at the electrical breaker or fuse before beginning installation. Ensure gas is turned off at the shutoff valve before beginning installation.

### ⚠ WARNING

When installing the fireplace - gas lines, fittings, accessories or any other objects cannot impede the proper movement of the door buckles.

### ⚠ WARNING

Some materials used in the manufacturing process of this product can expose you to Benzene which is known in the State of California to cause cancer and birth defects or other reproductive harm. For more information go to [www.P65warnings.ca.gov](http://www.P65warnings.ca.gov)

**Warning: If the information in these instructions is not followed exactly, a fire or explosion may result causing property damage, personal injury or loss of life.**

- Do not store or use gasoline or other flammable vapors and liquids in the vicinity of this or any other appliance.
- **What To Do If You Smell Gas:**
  - Do not try to light any appliance.
  - Do not touch any electrical switch; do not use any phone in your building.
  - Immediately call your gas supplier from a neighbor's phone. Follow the gas supplier's instructions.
  - If you cannot reach your gas supplier, call the fire department.
- Installation and service must be performed by a qualified installer, service agency or the gas supplier.



# Installation

## Contents

A. Disconnect wire from existing module:	3
B. Control Module Connection:	3
C. Main ON/OFF Switch Installation:	3
D. Battery Holder Installation:	4
E. Operation with Backup Battery:	4
F. Operation with Main Power:	4
G. CPI / IPI Jumper Cable Installation	5

## General Information

This kit is for installation with the models listed above.

KIT #	Contents
PF2RK	Remote Control, Manual Override switch with harness and bracket, backup battery pack, Proflame 2 operations manual, hardware and batteries.

## Before You Begin

Ensure that the power supply has been turned off at the breaker or fuse before beginning the installation.

Shut off the gas supply at the shut-off valve, and ensure that the main burner and pilot light have been turned off and the fireplace has been cooled off for at least two hours before installation.

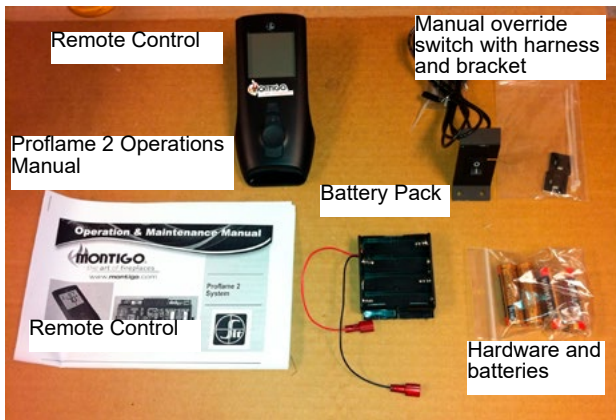


Figure 1 Contents of Proflame 2 Upgrade Kit

Note: You may remove the front cover (See Figure 2), or the burner assembly to access the control module and wiring. If removed, please ensure it is re-installed properly and all gas connections are leak tested.

## General Information

This kit contains the necessary components for upgrading the Proflame 2 standard unit to operate with Remote Control.

The installation of this unit must also conform with local codes or, in the absence of local codes, with the American National Fuel Gas Code, ANSI Z223.1, or the Canadian Installation Code, CAN / CGA B149.

## WARNING!

This upgrade kit shall be installed by a qualified service agency in accordance with the manufacturer's instructions and all applicable codes and requirements of the authority having jurisdiction. If the information in these instructions are not followed exactly, a fire, explosion or production of carbon monoxide may result causing property damage, personal injury or loss of life. The qualified service agency is responsible for the proper installation of this kit. The installation is not proper and complete until the operation of the converted appliance is checked as specified in the manufacturer's instructions supplied with this kit.

## Note

Upon successful installation of this upgrade kit, the following features are available for the user:

1. Thermostatic and smart thermostatic control of the fireplace
2. Main burner flame modulation (6 levels)
3. Choice of Standing or Intermittent pilot (CPI switch or jumper required)
4. Comfort fan speed modulation (Remote Fan Kit RFK50R required)
5. Battery backup for the main burner during power outage

## Tool Required

- Impact gun / Drill
- 1/4 " Nut driver bit

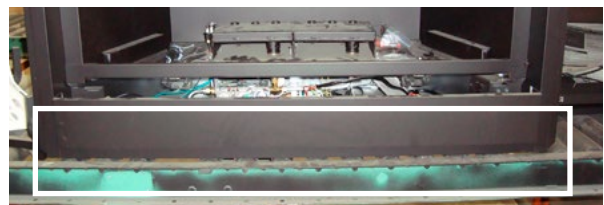


Figure 2 Fireplace front cover

# Installation



## A. Disconnect wire from existing module:

1. Remove valve blind and glass door.

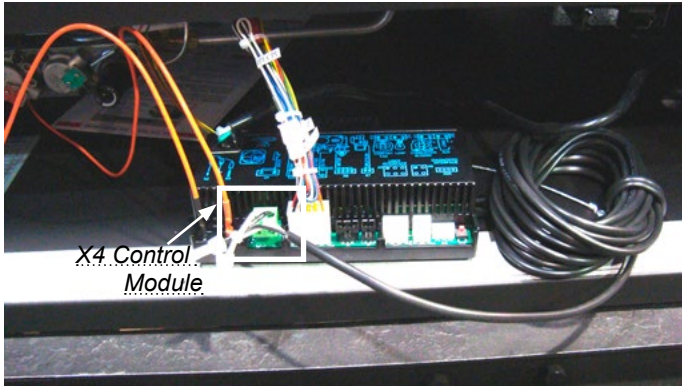


Figure 3 Control module with wires

## B. Control Module Connection:

1. Connect the Manual ON/OFF switch to X4.

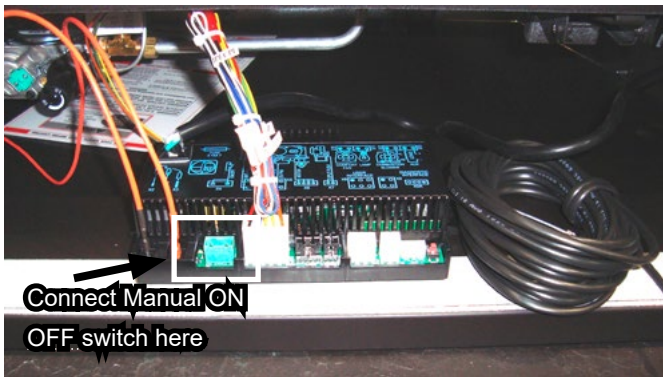


Figure 4 X4 plug on control module

## C. Main ON/OFF Switch Installation:

1. Position the Main/off Switch bracket on the right leg of the firebox as shown in Figure 5 and Figure 6
2. Using the two selftapping screws supplied attach the bracket. See Figure 6.
3. Feed the switch and the wires through the slot in the bracket as shown and install the switch to the bracket. See Figure 7.
4. Secure the wires to the floor of the fireplace using the supplied cable tie and cable tie mounts.
5. Attach the "Main ON/OFF" label supplied to the valve bracket.

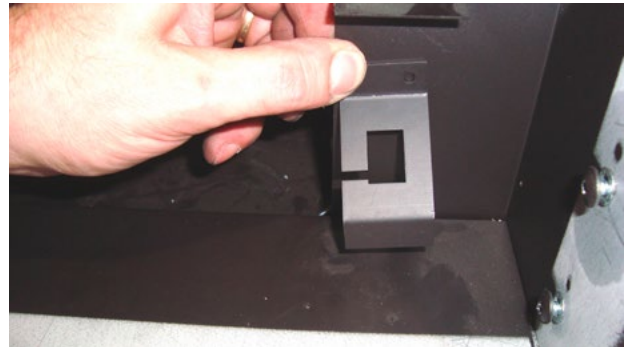


Figure 5 Attach switch bracket to front of fireplace



Figure 6 Attach switch bracket to front of fireplace

## Figure 7 Attach switch to bracket.







# Installation

Figure 8 Attach switch to bracket



## D. Battery Holder Installation:

1. Secure the battery holder to the fireplace floor using the supplied velcro strips. See Figure 9.

Note: The velcro strips act as an electrical isolation, do not attach the battery holder to any metal part without using the velcro strips, or the control module will be damaged.

2. Connect the red and black wires from the battery holder to the red and black wires from the valve harness. See Figure 10.

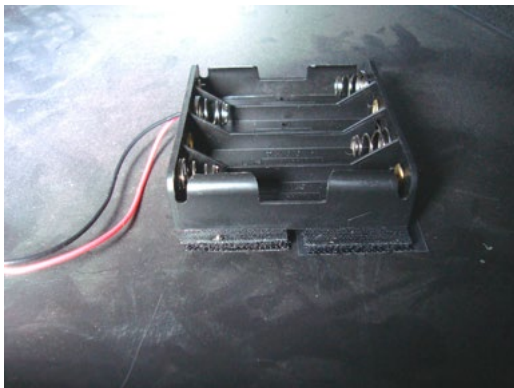


Figure 9 Battery holder

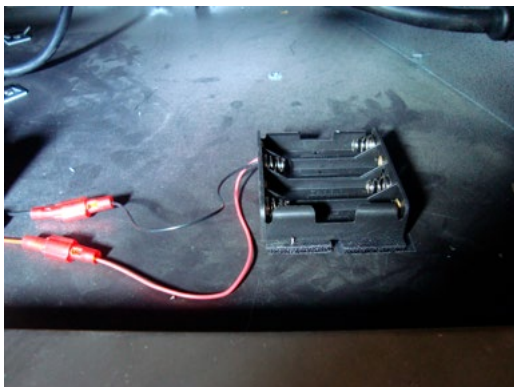


Figure 10 Battery holder wires

## E. Operation with Backup Battery:

1. Install the four supplied AA batteries to the battery holder.

CAUTION: Please note battery orientation while installing them. Incorrect orientation may damage battery, cause fire hazard and the fireplace may not function properly.

2. Follow the instructions on the "Proflame2 Operation and Maintenance Manual- XG0677" to install batteries on the remote control.
3. Turn the gas supply ON.
4. Program the remote control to the control module (see "Proflame2 Operation and Maintenance Manual- XG0677").
5. Check the stepper motor for gas leaks and ensure no leak.
6. Turn the fireplace ON and modulate the flame using the remote control and ensure proper operation (see "Proflame 2 Operation and Maintenance Manual XG0677").



Figure 11 Proflame Remote Control

## F. Operation with Main Power:

1. Follow the instructions on the "Proflame2 Operation and Maintenance Manual- XG0677" to install batteries on the remote control.
2. Turn the gas supply ON.
3. Turn the Main Power to ON.
4. Program the remote control to the control module (see "Proflame2 Operation and Maintenance Manual- XG0677").
5. Turn the fireplace ON and modulate the flame using the remote control and ensure proper operation (see "Proflame 2 Operation and Maintenance Manual XG0677").

# Installation



## G. CPI / IPI Jumper Cable Installation

(only available for SIT Electronic Ignition Systems)

### “Why use CPI mode”?

CPI means “Continuous Pilot Ignition” or “Standing Pilot” as it is commonly known. IPI means “Intermittent Pilot Ignition”, which only initializes the pilot when you are going to be using the appliance.

There are several reasons why you may choose to use CPI mode. When a flue is cold it can be difficult to light the appliance. It can take a bit of time (particularly on tall vents) to initialize vent action. This can result in “lifting” or “ghosting” of the flames during the first two to three minutes of operation. It is also possible to encounter times when the fireplace fails to light successfully. The fireplace will then attempt to re-light a second or third time depending on prevailing temperatures or altitude. When in CPI mode the pilot also keeps the system warm. During a “cold” start, condensation will normally form on the inner glass surface of the door. This condensation will quickly dry, however, the condensation tends to run down the glass and cause some streaking. CPI mode helps to resolve this issue. If CPI mode is used during the winter months the energy it takes to run the pilot is partially recovered as heat into the building, so it does not waste as much energy as running a pilot in the off season.

### If you use a wall switch:

A connector is supplied with this unit that can be plugged into the wire harness connected to the controller. When the CPI jumper is connected, the pilot will light and remain lit continuously. Use the wall switch to turn the main burner on or off. To switch back to IPI mode you must unplug the CPI jumper.

### If you use the remote:

A connector is supplied with this unit that can be plugged into the wire harness connected to the controller. This Jumper Cable gives the Remote Control the ability to operate the CPI / IPI switch and set the unit to operate in either condition.

### The difference between IPI and CPI:

**IPI (Intermittent Pilot Ignition) Mode:** is a fuel saving mode in which the pilot is only used when the main burner is on.

**CPI (Continuous Pilot Ignition) Mode:** The Pilot runs continuously even when the main burner is off.

## Installing the CPI Jumper Cable

1). Access the controller (refer to the installation and maintenance manual for your model).



Figure 12.

2). Remove the bag containing the Jumper Cable from the wiring harness connected to the controller as shown in Figure 12.

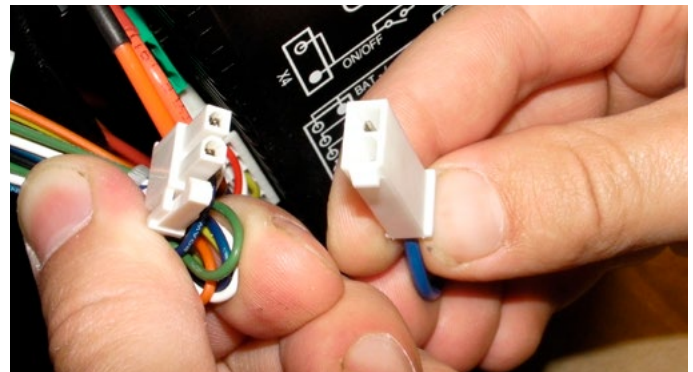


Figure 12a.

3). Find the corresponding plug attached to the control wire harness and connect the CPI jumper.



Figure 12b.

4). See remote operation manual to turn remote into CPI mode.

# Proflame 2 Upgrade Kit