



DRLT36, DRLT36-2, DRLT48, DRLT48-2, DRLT60, DRLT60-2, DLT63, DLT63-2, DRSQT34, DRSQT34-2, DRSQT38, DRSQT38-2, DRSQT42, DRSQT42-2, DRSQT46, DRSQT46-2
1" ADJUSTABLE TRIM KIT

- The installation of this KIT must be done by a qualified and certified gas appliance installer.
- Check local codes and read all instructions prior to installation.

NOTICE

Installer: Leave this manual with the appliance.
 Consumer: Retain this manual for future reference.

WARNING

Some materials used in the manufacturing process of this product can expose you to Benzene which is known in the State of California to cause cancer and birth defects or other reproductive harm. For more information go to www.P65warnings.ca.gov

- 1** The facing material should be fully finished before installation of the trim kit.



Assembly

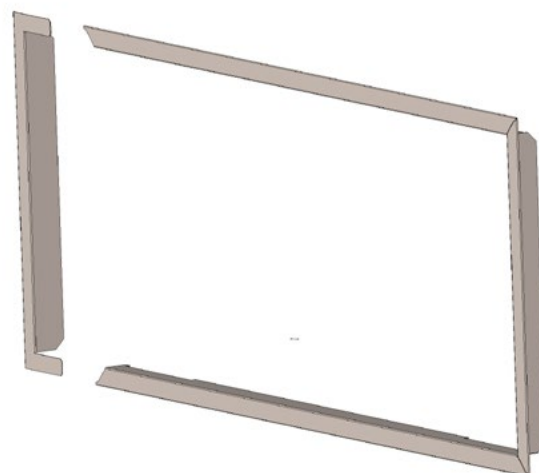
THIS SECTION ONLY FOR DELRAY LINEAR SCREENS MANUFACTURED BEFORE MAY 2020

Please refer to your rating plate serial number for the date of manufacture. If unsure, measure the length of the tabs, if it is below ¼", it does not need modification.

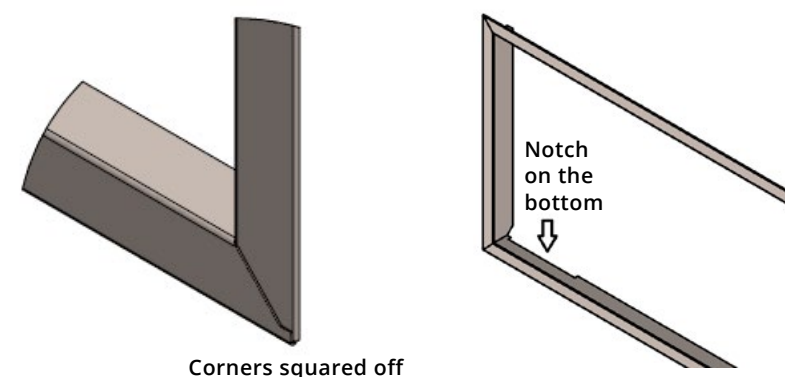
- 2** Before construction and installation of the trim kit can begin, the bottom ⅛" off the DelRay screen tabs must be trimmed.



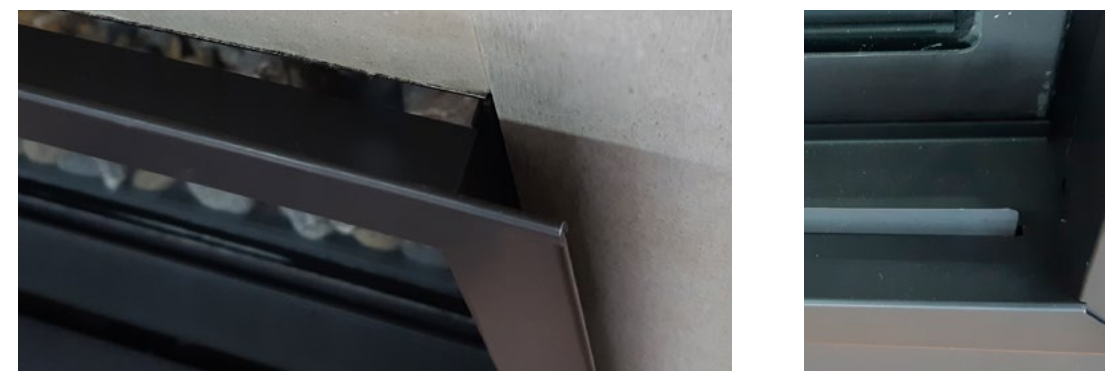
- 3** Slide the side pieces into the top and bottom tracks.



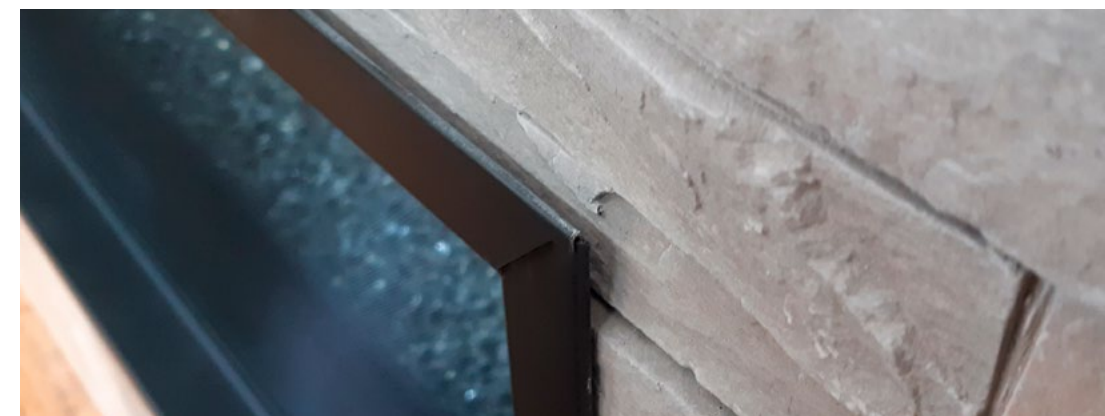
- 4** Ensure the all 4 corners of the trim kit are squared off. Before installation orient the trim so the notched section is on the bottom.



- 5** The Trim slides on the inside of the flush frame of the opening. Push in until the trim is flush with the facing material.



- 6** The trim can slide in and out to the full depth of the facing material providing it falls within the depth limits of the trim kit. A construction adhesive can be used to better secure the trim.





**DLT36, DLT36-2, DLT48, DLT48-2, DLT72, DLT72-2
1" ADJUSTABLE TRIM KIT**

- The installation of this KIT must be done by a qualified and certified gas appliance installer.
- Check local codes and read all instructions prior to installation.

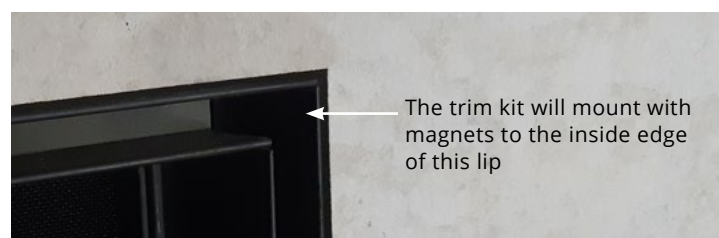
NOTICE

Installer: Leave this manual with the appliance.
Consumer: Retain this manual for future reference.

WARNING

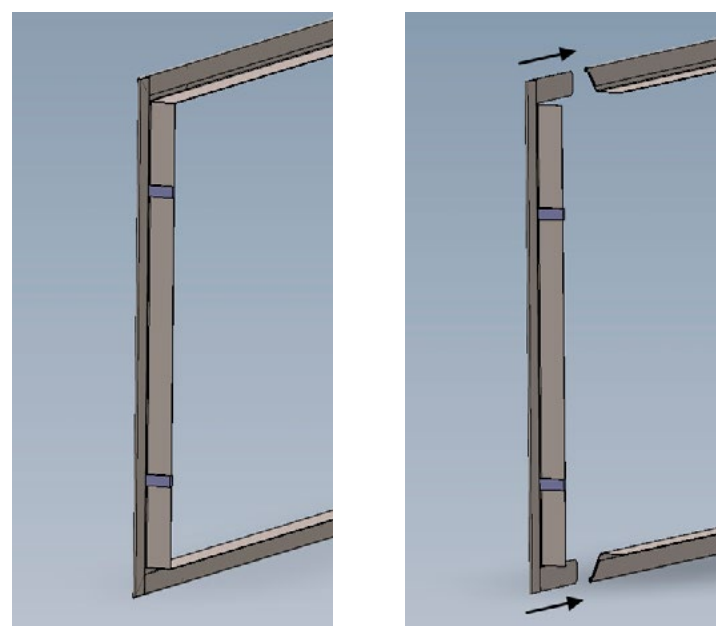
Some materials used in the manufacturing process of this product can expose you to Benzene which is known in the State of California to cause cancer and birth defects or other reproductive harm. For more information go to www.P65warnings.ca.gov

- 1 The facing material should be fully finished before installation of the trim kit.

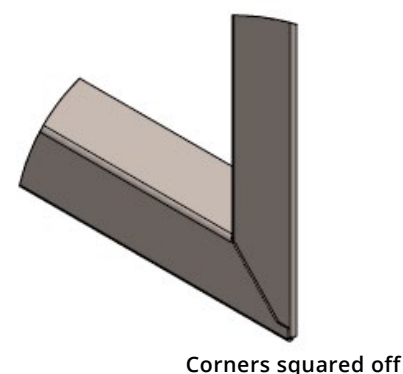


Assembly

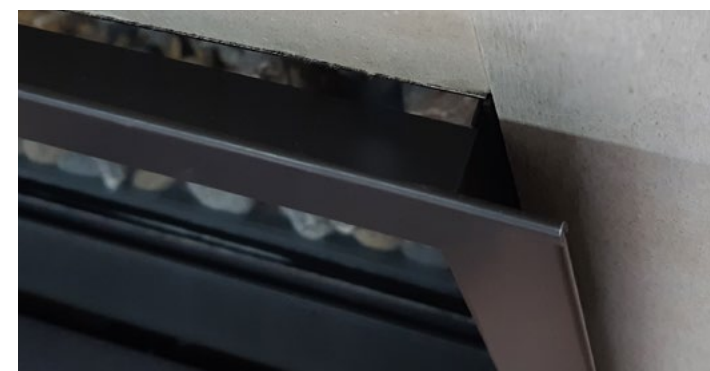
- 2 Slide the side pieces into the top and bottom tracks.



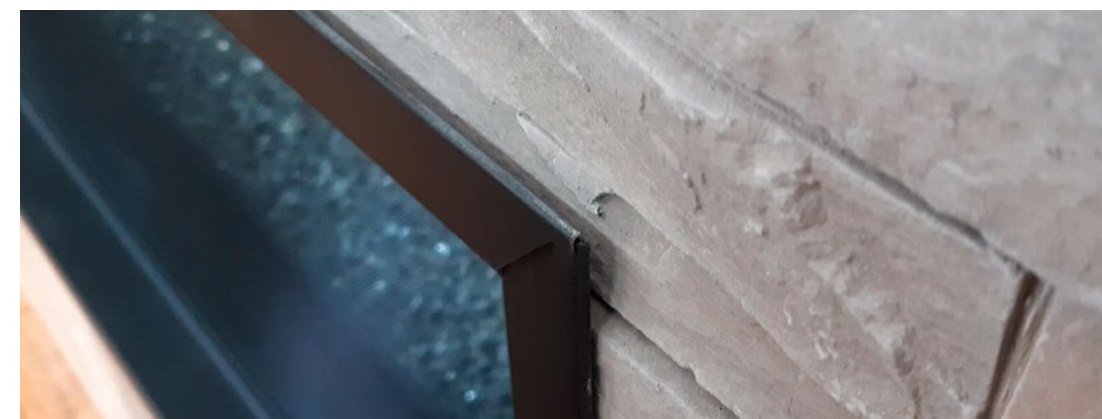
- 3 Ensure the all 4 corners of the trim kit are squared off.



- 4 The Trim slides on the inside of the flush frame of the opening. Push in until the trim is flush with the facing material.



- 5 The trim can slide in and out to the full depth of the facing material providing it falls within the depth limits of the trim kit.



**THIS SECTION ONLY FOR
DISTINCTION TRIMS DLT72, DLT72-2**

- 6 Secure the top of the trim to the finishing material with the included screw to prevent bowing of the top trim piece when heated.

