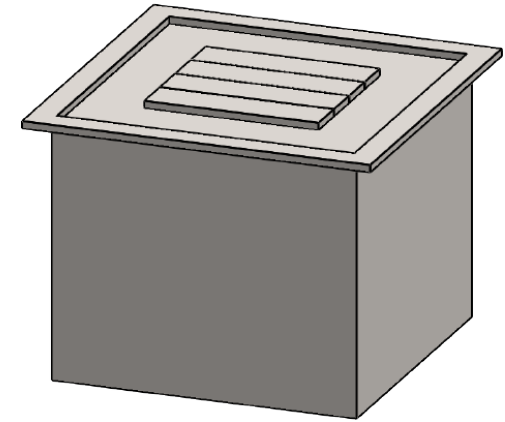


TECHNICAL SPECIFICATION

This Montigo commercial firepit and its associated components are part of a custom engineered system. All systems are tested and certified to current ANSI Standards with CSA International US and Canada.

Please contact Montigo to confirm if your installation requirements are within the parameters of these standard specifications.



OVERVIEW

Burner Area: 24" x 24"

Barriers & Screens:

Single or double protective glass†

Protective mesh enclosure‡

TYPICAL INTAKE

Intake Size: 13 ½" sq.in. min.

Intake Location: Below burner

TYPICAL EXHAUST

Outdoor appliance, no dedicated vent

GAS

Rating Input: Estimated 80,000 BTU/hr

Minimum Inlet Pressure: 5.5" w.c. Natural Gas / 11" w.c. Propane

Gas System: ½" NPT bottom, Hot Surface Ignition, Smart Valve

Concealed modular burner with 16" plume flame

CONSTRUCTION

Stainless steel or satin galvanized (black)‡, delivered rough finished, ready to clad

ELECTRICAL

120 VAC, single phase, dedicated circuit, AMP rating depends on actual spec

BURNER MEDIA

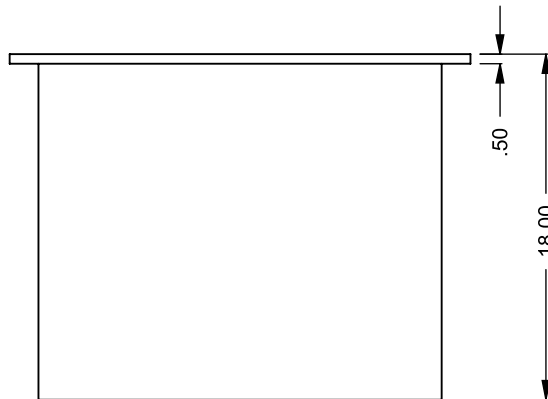
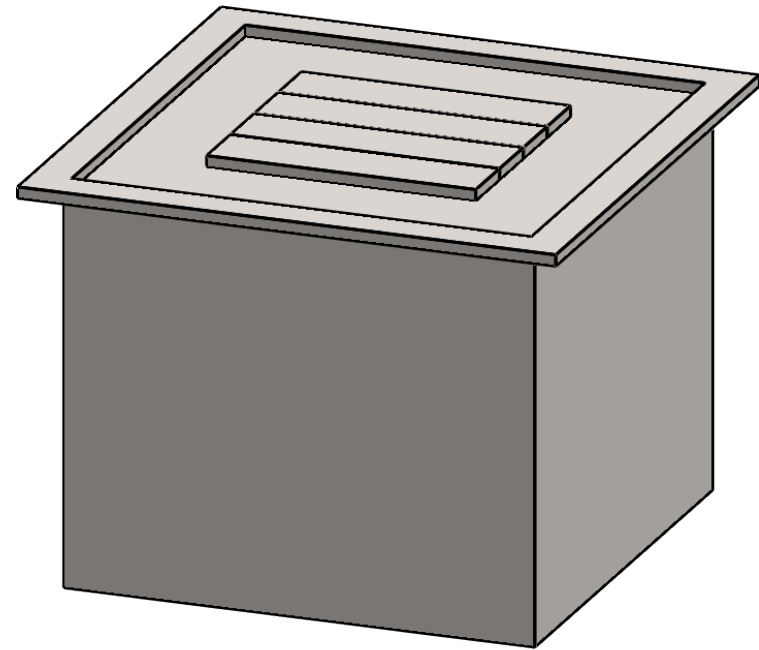
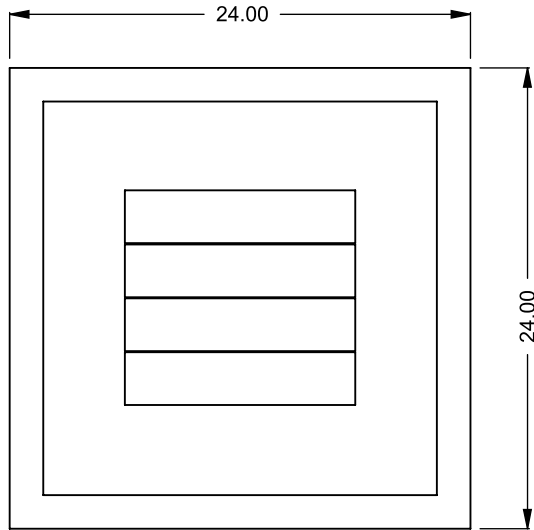
Glass media

TESTING STANDARDS

ANSI Z21.97-2017/CSA 2.41-2017

† May be available, please inquire on your specific project, waiver required

‡ Option can be used when the firepit is in a protected or covered location



CFPO-S24
 Square Firepit
Bottom Intake

**PRELIMINARY
 DRAWING ONLY** 

| EXAMPLE CONFIGURATION | UNLESS OTHERWISE SPECIFIED | DATE |
|--|---|-------------|
| MONTIGO COMMERCIAL FIREPLACES ARE CUSTOM BUILT FOR EACH PROJECT. THIS DRAWING IS FOR REFERENCE ONLY. FLUE AND AIR INTAKE SIZES ARE SUBJECT TO CHANGE DEPENDING ON VENT RUN. | DIMENSIONS ARE IN INCHES TOLERANCES: FRACTIONAL $\pm 1/8"$ | 28/08/2020 |

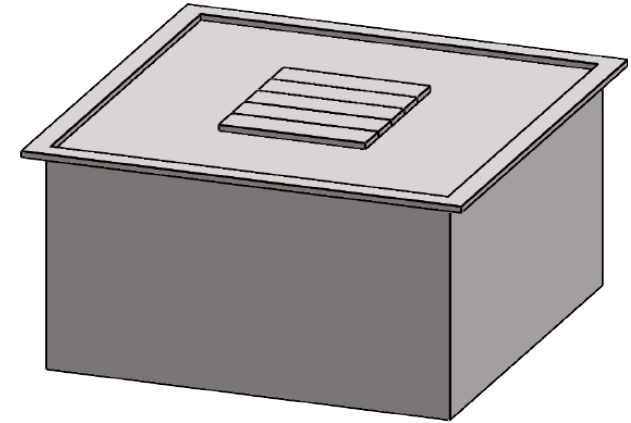
MONTIGO
 the art of **fireplaces**
 www.montigo.com

MONTIGO® CFPO-S36 Firepit Square

TECHNICAL SPECIFICATION

This Montigo commercial firepit and its associated components are part of a custom engineered system. All systems are tested and certified to current ANSI Standards with CSA International US and Canada.

Please contact Montigo to confirm if your installation requirements are within the parameters of these standard specifications.



OVERVIEW

Burner Area: 36" x 36"

Barriers & Screens:

Single or double protective glass†

Protective mesh enclosure†

TYPICAL INTAKE

Intake Size: 20" sq.in. min.

Intake Location: Below burner

TYPICAL EXHAUST

Outdoor appliance, no dedicated vent

GAS

Rating Input: Estimated 110,000 BTU/hr

Minimum Inlet Pressure: 5.5" w.c. Natural Gas / 11" w.c. Propane

Gas System: ½" NPT bottom, Hot Surface Ignition, Smart Valve

Concealed modular burner with 16" plume flame

CONSTRUCTION

Stainless steel or satin galvanized (black)*, delivered rough finished, ready to clad

ELECTRICAL

120 VAC, single phase, dedicated circuit, AMP rating depends on actual spec

BURNER MEDIA

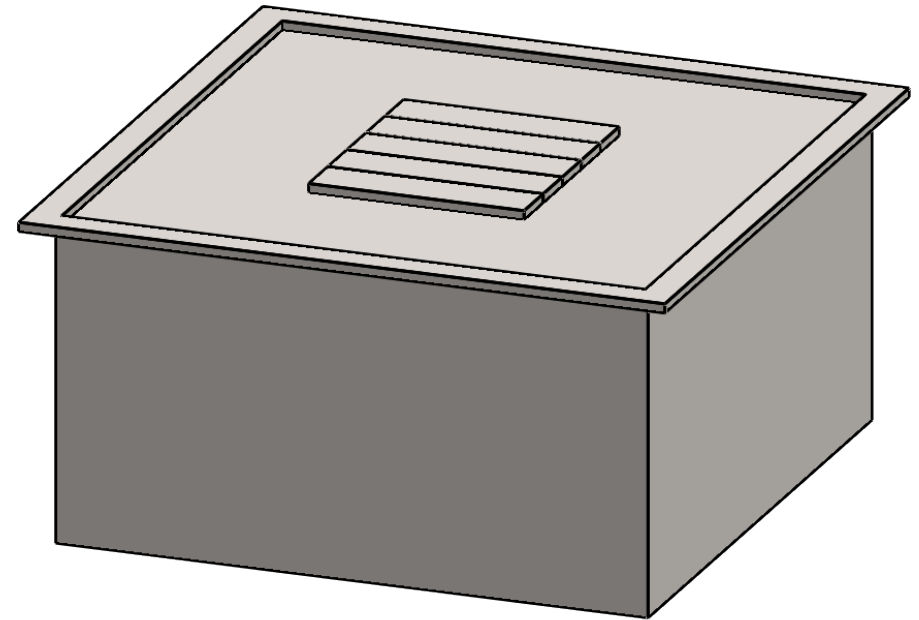
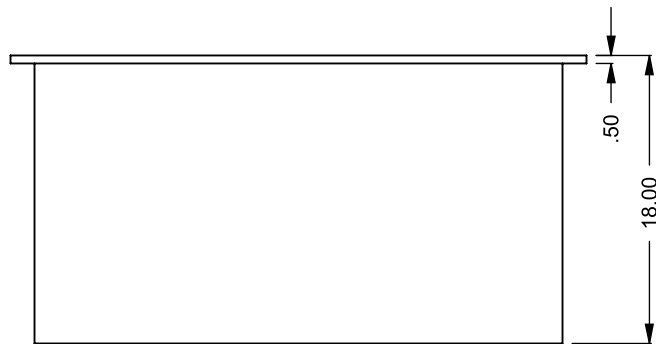
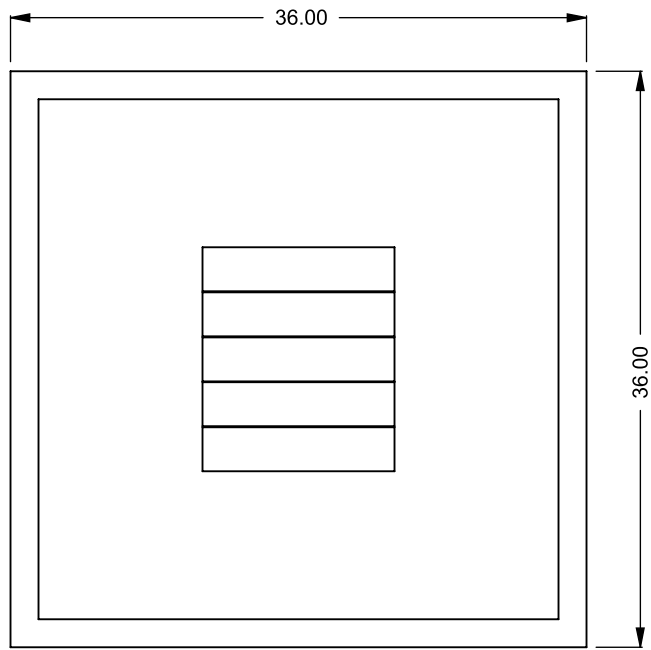
Glass media

TESTING STANDARDS

ANSI Z21.97-2017/CSA 2.41-2017

† May be available, please inquire on your specific project, waiver required

* Option can be used when the firepit is in a protected or covered location



CFPO-S36
 Square Firepit
Bottom Intake

**PRELIMINARY
 DRAWING ONLY** 

| EXAMPLE CONFIGURATION | UNLESS OTHERWISE SPECIFIED | DATE |
|--|---|-------------|
| MONTIGO COMMERCIAL FIREPLACES ARE CUSTOM BUILT FOR EACH PROJECT. THIS DRAWING IS FOR REFERENCE ONLY. FLUE AND AIR INTAKE SIZES ARE SUBJECT TO CHANGE DEPENDING ON VENT RUN. | DIMENSIONS ARE IN INCHES TOLERANCES: FRACTIONAL $\pm 1/8"$ | 28/08/2020 |

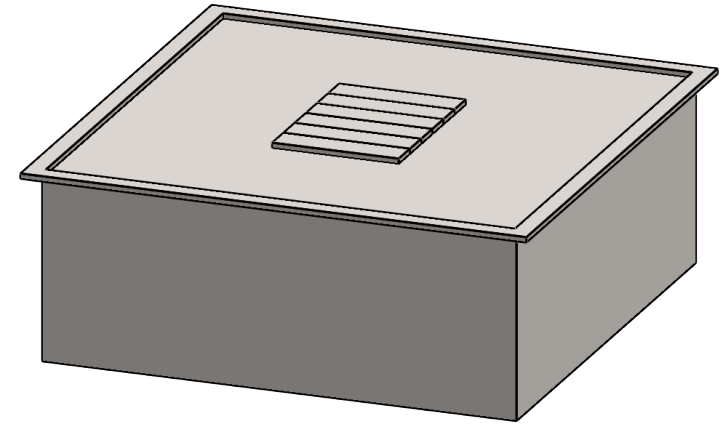
MONTIGO
 the art of **fireplaces**
www.montigo.com

MONTIGO® CFPO-S48 Firepit Square

TECHNICAL SPECIFICATION

This Montigo commercial firepit and its associated components are part of a custom engineered system. All systems are tested and certified to current ANSI Standards with CSA International US and Canada.

Please contact Montigo to confirm if your installation requirements are within the parameters of these standard specifications.



OVERVIEW

Burner Area: 48" x 48"

Barriers & Screens:

Single or double protective glass†

Protective mesh enclosure†

TYPICAL INTAKE

Intake Size: 21" sq.in. min.

Intake Location: Below burner

TYPICAL EXHAUST

Outdoor appliance, no dedicated vent

GAS

Rating Input: Estimated 120,000 BTU/hr

Minimum Inlet Pressure: 5.5" w.c. Natural Gas / 11" w.c. Propane

Gas System: ½" NPT bottom, Hot Surface Ignition, Smart Valve

Concealed modular burner with 16" plume flame

CONSTRUCTION

Stainless steel or satin galvanized (black)*, delivered rough finished, ready to clad

ELECTRICAL

120 VAC, single phase, dedicated circuit, AMP rating depends on actual spec

BURNER MEDIA

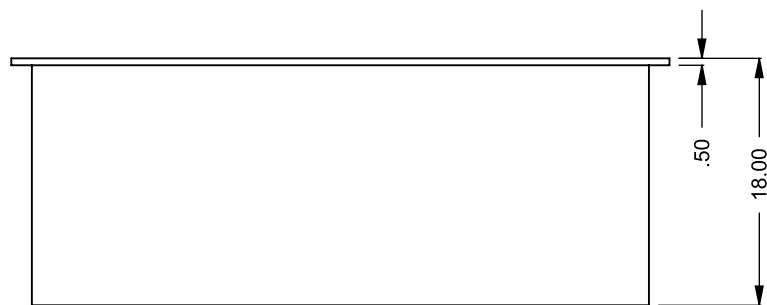
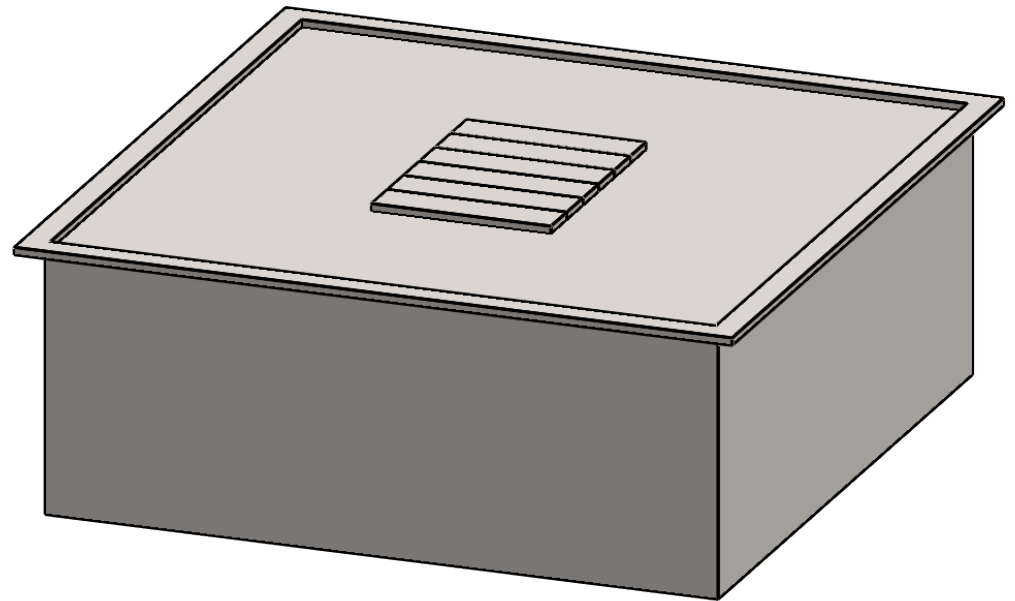
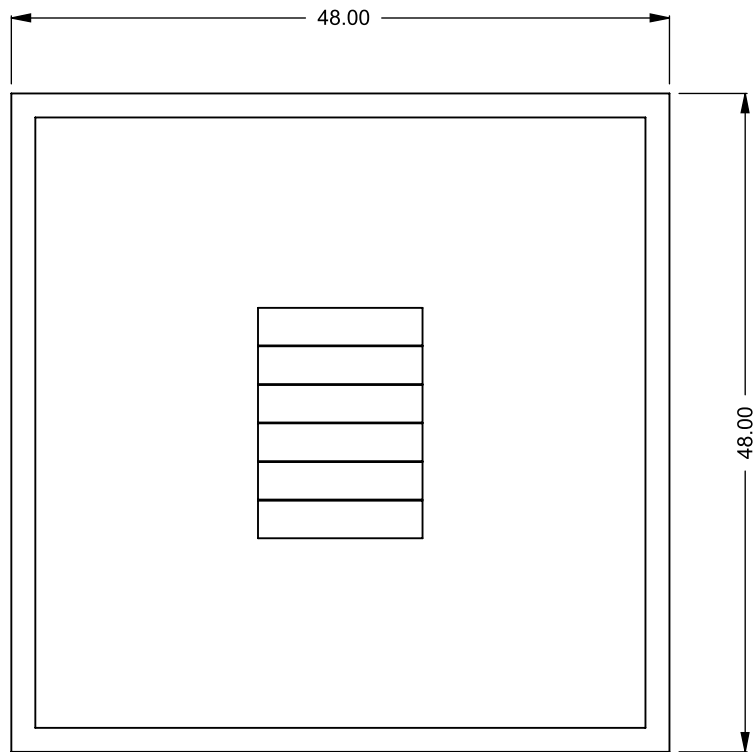
Glass media

TESTING STANDARDS

ANSI Z21.97-2017/CSA 2.41-2017

† May be available, please inquire on your specific project, waiver required

* Option can be used when the firepit is in a protected or covered location



CFPO-S48
 Square Firepit
Bottom Intake

**PRELIMINARY
 DRAWING ONLY** 

| EXAMPLE CONFIGURATION | UNLESS OTHERWISE SPECIFIED | DATE |
|--|---|-------------|
| MONTIGO COMMERCIAL FIREPLACES ARE CUSTOM BUILT FOR EACH PROJECT. THIS DRAWING IS FOR REFERENCE ONLY. FLUE AND AIR INTAKE SIZES ARE SUBJECT TO CHANGE DEPENDING ON VENT RUN. | DIMENSIONS ARE IN INCHES TOLERANCES: FRACTIONAL $\pm 1/8"$ | 28/08/2020 |

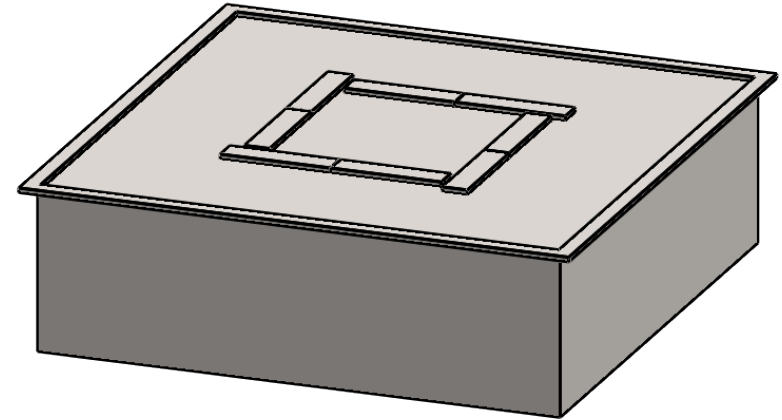
MONTIGO
 the art of **fireplaces**
 www.montigo.com

MONTIGO® CFPO-S60 Firepit Square

TECHNICAL SPECIFICATION

This Montigo commercial firepit and its associated components are part of a custom engineered system. All systems are tested and certified to current ANSI Standards with CSA International US and Canada.

Please contact Montigo to confirm if your installation requirements are within the parameters of these standard specifications.



OVERVIEW

Burner Area: 60" x 60"

Barriers & Screens:

Single or double protective glass†

Protective mesh enclosure†

TYPICAL INTAKE

Intake Size: 30" sq.in. min.

Intake Location: Below burner

TYPICAL EXHAUST

Outdoor appliance, no dedicated vent

GAS

Rating Input: Estimated 130,000 BTU/hr

Minimum Inlet Pressure: 5.5" w.c. Natural Gas / 11" w.c. Propane

Gas System: ½" NPT bottom, Hot Surface Ignition, Smart Valve

Concealed modular burner with 16" plume flame

CONSTRUCTION

Stainless steel or satin galvanized (black)*, delivered rough finished, ready to clad

ELECTRICAL

120 VAC, single phase, dedicated circuit, AMP rating depends on actual spec

BURNER MEDIA

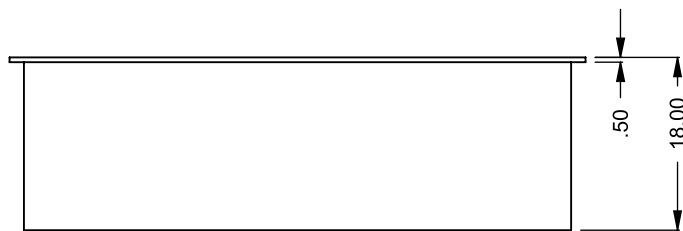
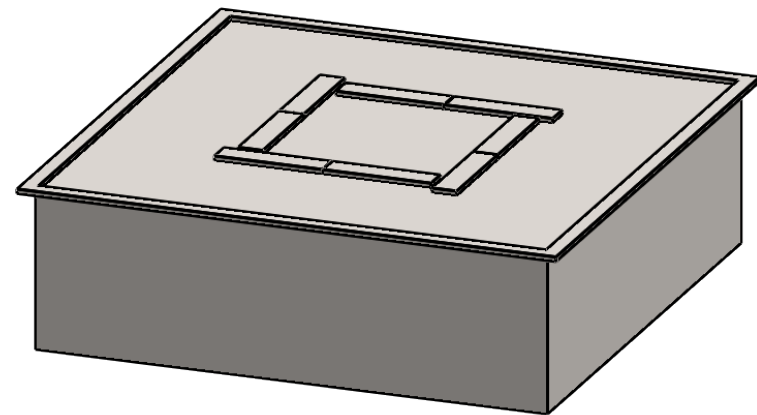
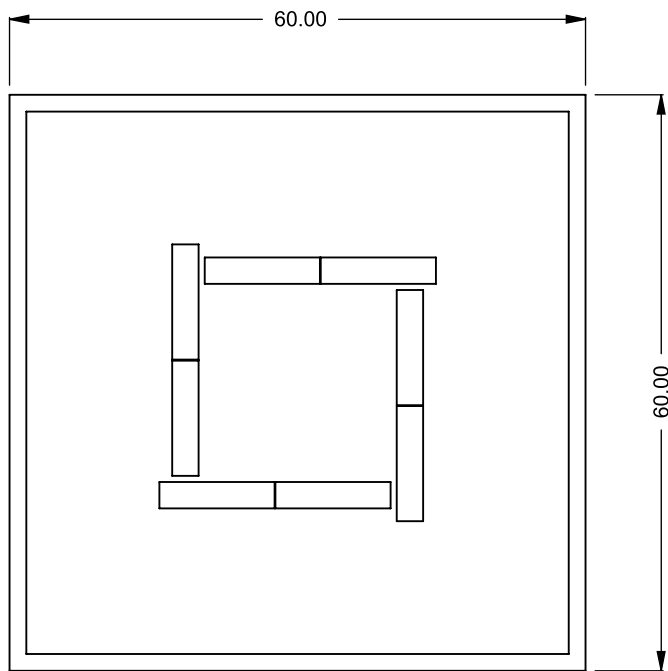
Glass media

TESTING STANDARDS

ANSI Z21.97-2017/CSA 2.41-2017

† May be available, please inquire on your specific project, waiver required

* Option can be used when the firepit is in a protected or covered location



CFPO-S60
 Square Firepit
Bottom Intake

**PRELIMINARY
 DRAWING ONLY** 

| EXAMPLE CONFIGURATION | UNLESS OTHERWISE SPECIFIED | DATE |
|--|---|------------|
| MONTIGO COMMERCIAL FIREPLACES ARE CUSTOM BUILT FOR EACH PROJECT. THIS DRAWING IS FOR REFERENCE ONLY. FLUE AND AIR INTAKE SIZES ARE SUBJECT TO CHANGE DEPENDING ON VENT RUN. | DIMENSIONS ARE IN INCHES TOLERANCES: FRACTIONAL $\pm 1/8"$ | 28/08/2020 |

MONTIGO
 the art of **fireplaces**
www.montigo.com