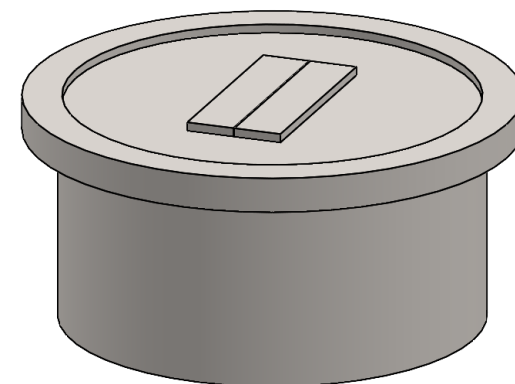


TECHNICAL SPECIFICATION

This Montigo commercial firepit and its associated components are part of a custom engineered system. All systems are tested and certified to current ANSI Standards with CSA International US and Canada.

Please contact Montigo to confirm if your installation requirements are within the parameters of these standard specifications.



OVERVIEW

Burner Area: 24" Dia.

OPTIONS

Protective mesh enclosure†

Single or double protective glass†

Note: Unit dimensions will increase when single or double glass is requested. Please inquire as to actual size.

TYPICAL INTAKE

Intake Size: 10" sq.in. min.

Intake Location: Bottom

TYPICAL EXHAUST

Outdoor appliance, no dedicated vent

GAS

Rating Input: Estimated 40,000 BTU/hr

Minimum Inlet Pressure: 5.5" w.c. Natural Gas / 11" w.c. Propane

Gas System: ½" NPT bottom, Hot Surface Ignition, Smart Valve

Concealed modular burner with plume flame

CONSTRUCTION

Stainless steel or satin galvanized (black)*, delivered rough finished, ready to clad; supplied locally by others

ELECTRICAL

Standalone NEMA weatherproof box with built-in on/off switch mounted within 50'-150' of firepit near 120 VAC 5 AMP exterior outlet

Box includes short whip and three prong plug

BURNER MEDIA

Glass media

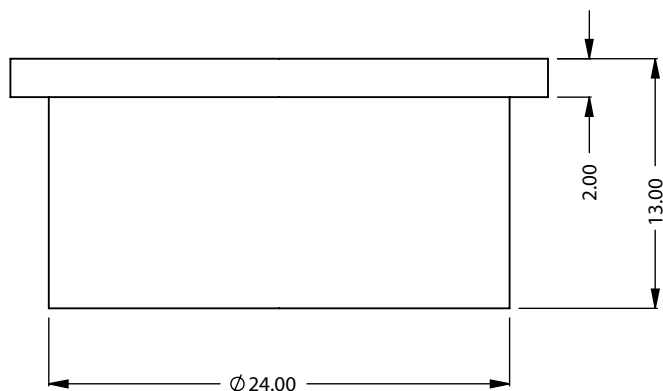
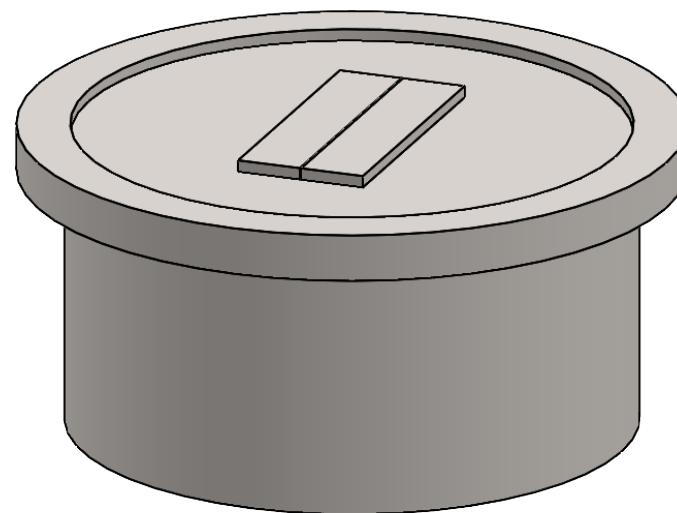
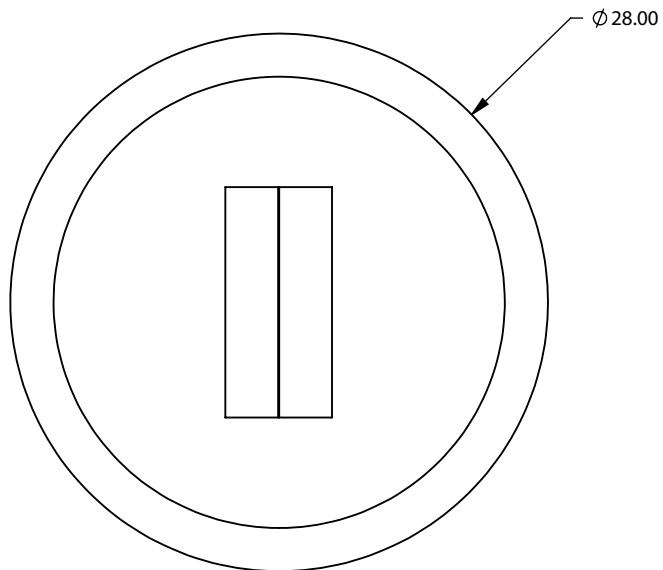
Optional: Driftwood logs, speckled stones

TESTING STANDARDS

ANSI Z21.97-2017/CSA 2.41-2017

† May be available, please inquire on your specific project, waiver required

* Option can be used when the firepit is in a protected or covered location



CFPO-RD-24

Round Firepit
Bottom Intake

PRELIMINARY
DRAWING ONLY

EXAMPLE CONFIGURATION

MONTIGO COMMERCIAL FIREPLACES ARE CUSTOM BUILT FOR EACH PROJECT. THIS DRAWING IS FOR REFERENCE ONLY.

FLUE AND AIR INTAKE SIZES ARE SUBJECT TO CHANGE DEPENDING ON VENT RUN.

UNLESS OTHERWISE SPECIFIED

DIMENSIONS ARE IN INCHES
TOLERANCES: FRACTIONAL $\pm 1/8"$

DATE

2/6/2023

MONTIGO
the art of **fireplaces**
www.montigo.com

TECHNICAL SPECIFICATION

This Montigo commercial firepit and its associated components are part of a custom engineered system. All systems are tested and certified to current ANSI Standards with CSA International US and Canada.

Please contact Montigo to confirm if your installation requirements are within the parameters of these standard specifications.

OVERVIEW

Burner Area: 30" Dia.

OPTIONS

Protective mesh enclosure†

Single or double protective glass†

Note: Unit dimensions will increase when single or double glass is requested. Please inquire as to actual size.

TYPICAL INTAKE

Intake Size: 13 ½" sq.in. min.

Intake Location: Bottom

TYPICAL EXHAUST

Outdoor appliance, no dedicated vent

GAS

Rating Input: Estimated 40,000 BTU/hr

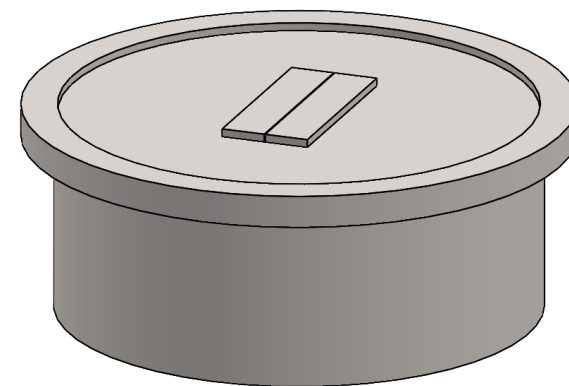
Minimum Inlet Pressure: 5.5" w.c. Natural Gas / 11" w.c. Propane

Gas System: ½" NPT bottom, Hot Surface Ignition, Smart Valve

Concealed modular burner with plume flame

CONSTRUCTION

Stainless steel or satin galvanized (black)*, delivered rough finished, ready to clad; supplied locally by others



ELECTRICAL

Standalone NEMA weatherproof box with built-in on/off switch mounted within 50'-150' of firepit near 120 VAC 5 AMP exterior outlet

Box includes short whip and three prong plug

BURNER MEDIA

Glass media

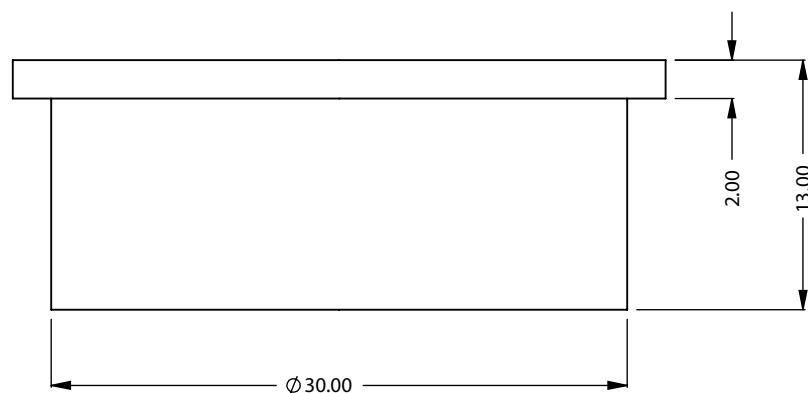
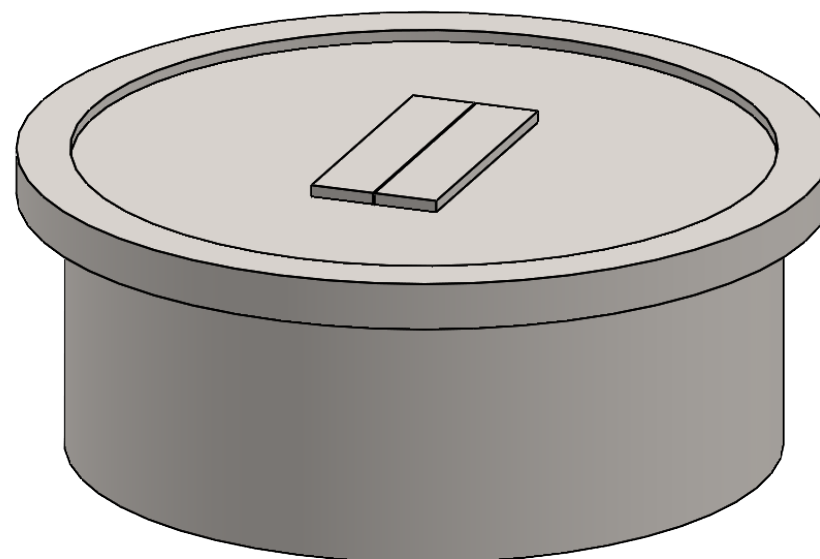
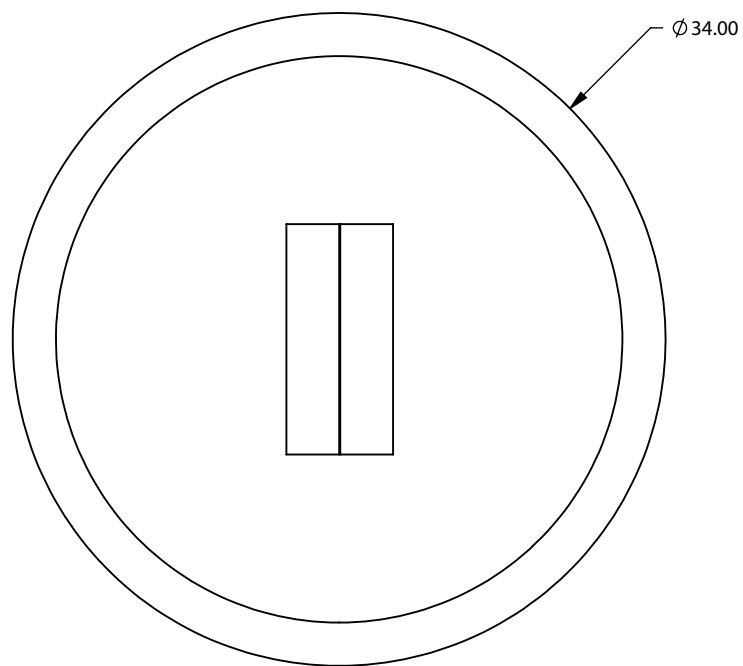
Optional: Driftwood logs, speckled stones

TESTING STANDARDS

ANSI Z21.97-2017/CSA 2.41-2017

† May be available, please inquire on your specific project, waiver required

* Option can be used when the firepit is in a protected or covered location



CFPO-RD-30

Round Firepit
Bottom Intake

PRELIMINARY
DRAWING ONLY

EXAMPLE CONFIGURATION

MONTIGO COMMERCIAL FIREPLACES ARE CUSTOM BUILT FOR EACH PROJECT. THIS DRAWING IS FOR REFERENCE ONLY.

FLUE AND AIR INTAKE SIZES ARE SUBJECT TO CHANGE DEPENDING ON VENT RUN.

UNLESS OTHERWISE SPECIFIED

DIMENSIONS ARE IN INCHES
TOLERANCES: FRACTIONAL $\pm 1/8"$

DATE

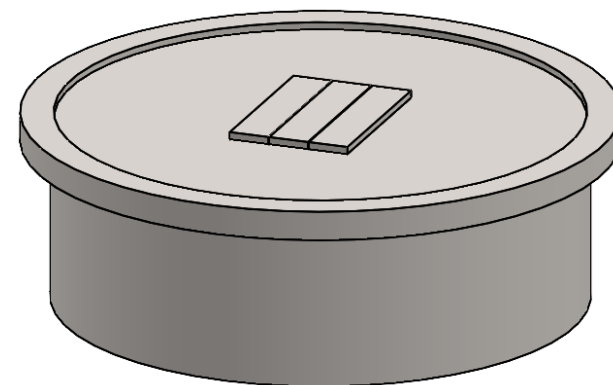
2/6/2023

MONTIGO
the art of **fireplaces**
www.montigo.com

TECHNICAL SPECIFICATION

This Montigo commercial firepit and its associated components are part of a custom engineered system. All systems are tested and certified to current ANSI Standards with CSA International US and Canada.

Please contact Montigo to confirm if your installation requirements are within the parameters of these standard specifications.



OVERVIEW

Burner Area: 36" Dia.

OPTIONS

Protective mesh enclosure†

Single or double protective glass†

Note: Unit dimensions will increase when single or double glass is requested. Please inquire as to actual size.

TYPICAL INTAKE

Intake Size: 13 ½" sq.in. min.

Intake Location: Bottom

TYPICAL EXHAUST

Outdoor appliance, no dedicated vent

GAS

Rating Input: Estimated 60,000 BTU/hr

Minimum Inlet Pressure: 5.5" w.c. Natural Gas / 11" w.c. Propane

Gas System: ½" NPT bottom, Hot Surface Ignition, Smart Valve

Concealed modular burner with plume flame

CONSTRUCTION

Stainless steel or satin galvanized (black)*, delivered rough finished, ready to clad; supplied locally by others

ELECTRICAL

Standalone NEMA weatherproof box with built-in on/off switch mounted within 50'-150' of firepit near 120 VAC 5 AMP exterior outlet

Box includes short whip and three prong plug

BURNER MEDIA

Glass media

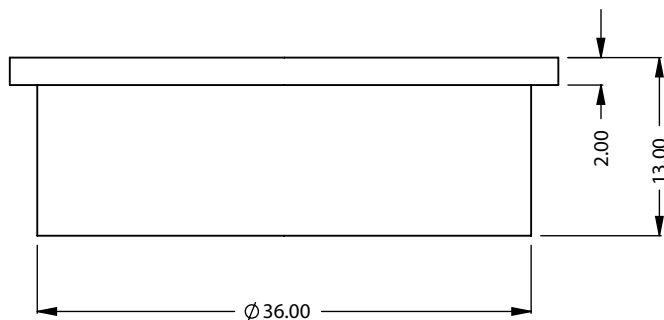
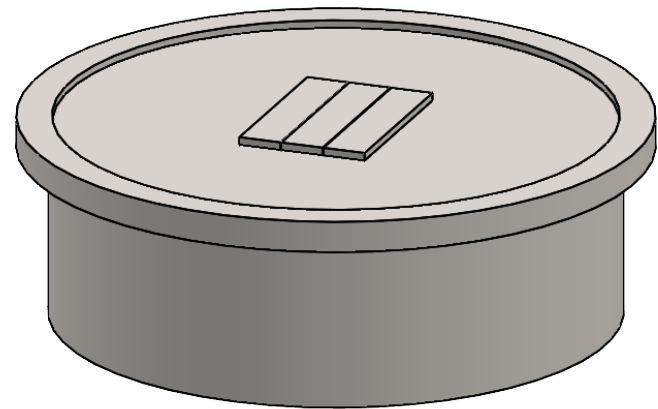
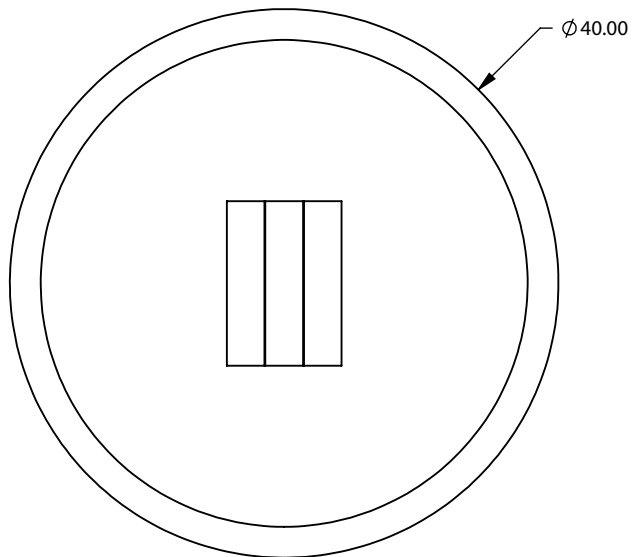
Optional: Driftwood logs, speckled stones

TESTING STANDARDS

ANSI Z21.97-2017/CSA 2.41-2017

† May be available, please inquire on your specific project, waiver required

* Option can be used when the firepit is in a protected or covered location



CFPO-RD-36

Round Firepit
Bottom Intake

PRELIMINARY
DRAWING ONLY

EXAMPLE CONFIGURATION

MONTIGO COMMERCIAL FIREPLACES ARE CUSTOM BUILT FOR EACH PROJECT. THIS DRAWING IS FOR REFERENCE ONLY.

FLUE AND AIR INTAKE SIZES ARE SUBJECT TO CHANGE DEPENDING ON VENT RUN.

UNLESS OTHERWISE SPECIFIED

DIMENSIONS ARE IN INCHES
TOLERANCES: FRACTIONAL $\pm 1/8"$

DATE

2/6/2023

MONTIGO
the art of **fireplaces**
www.montigo.com

TECHNICAL SPECIFICATION

This Montigo commercial firepit and its associated components are part of a custom engineered system. All systems are tested and certified to current ANSI Standards with CSA International US and Canada.

Please contact Montigo to confirm if your installation requirements are within the parameters of these standard specifications.

OVERVIEW

Burner Area: 42" Dia.

OPTIONS

Protective mesh enclosure†

Single or double protective glass†

Note: Unit dimensions will increase when single or double glass is requested. Please inquire as to actual size.

TYPICAL INTAKE

Intake Size: 17" sq.in. min.

Intake Location: Bottom

TYPICAL EXHAUST

Outdoor appliance, no dedicated vent

GAS

Rating Input: Estimated 80,000 BTU/hr

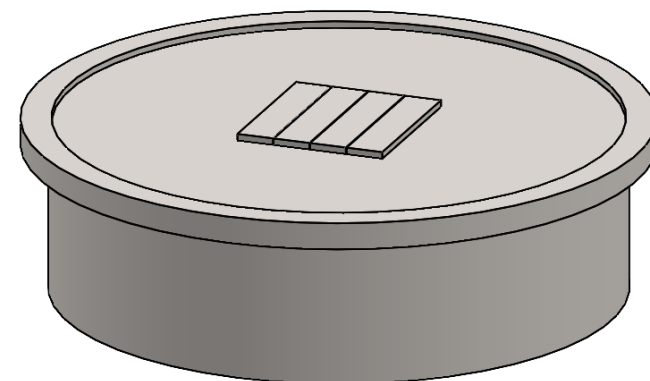
Minimum Inlet Pressure: 5.5" w.c. Natural Gas / 11" w.c. Propane

Gas System: ½" NPT bottom, Hot Surface Ignition, Smart Valve

Concealed modular burner with plume flame

CONSTRUCTION

Stainless steel or satin galvanized (black)*, delivered rough finished, ready to clad; supplied locally by others



ELECTRICAL

Standalone NEMA weatherproof box with built-in on/off switch mounted within 50'-150' of firepit near 120 VAC 5 AMP exterior outlet

Box includes short whip and three prong plug

BURNER MEDIA

Glass media

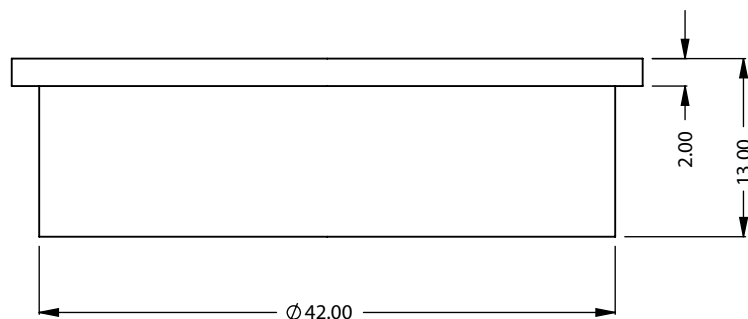
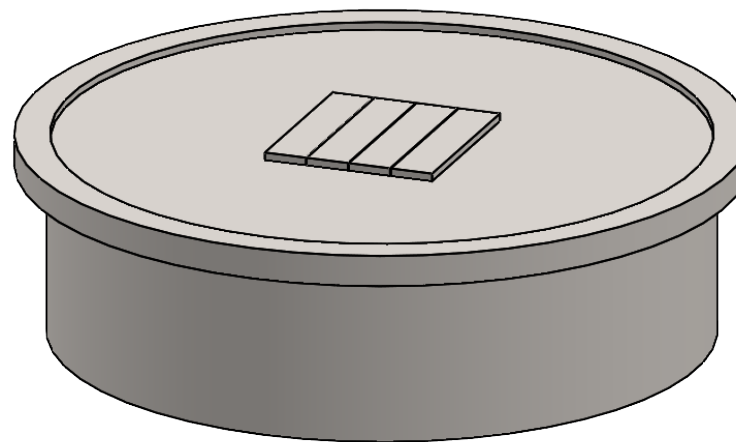
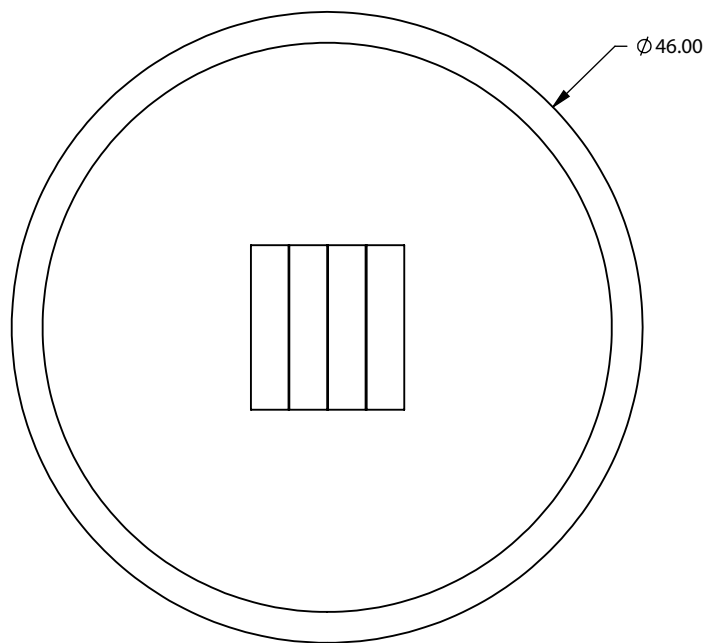
Optional: Driftwood logs, speckled stones, campfire logset

TESTING STANDARDS

ANSI Z21.97-2017/CSA 2.41-2017

† May be available, please inquire on your specific project, waiver required

* Option can be used when the firepit is in a protected or covered location



CFPO-RD-42

Round Firepit
Bottom Intake

PRELIMINARY
DRAWING ONLY

EXAMPLE CONFIGURATION

MONTIGO COMMERCIAL FIREPLACES ARE CUSTOM BUILT FOR EACH PROJECT. THIS DRAWING IS FOR REFERENCE ONLY.

FLUE AND AIR INTAKE SIZES ARE SUBJECT TO CHANGE DEPENDING ON VENT RUN.

UNLESS OTHERWISE SPECIFIED

DIMENSIONS ARE IN INCHES
TOLERANCES: FRACTIONAL $\pm 1/8"$

DATE

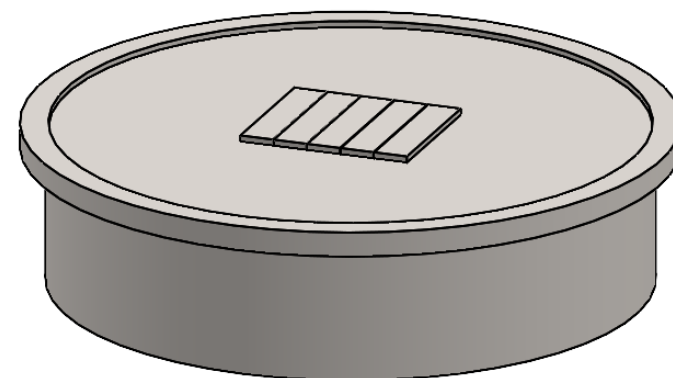
2/6/2023

MONTIGO
the art of **fireplaces**
www.montigo.com

TECHNICAL SPECIFICATION

This Montigo commercial firepit and its associated components are part of a custom engineered system. All systems are tested and certified to current ANSI Standards with CSA International US and Canada.

Please contact Montigo to confirm if your installation requirements are within the parameters of these standard specifications.



OVERVIEW

Burner Area: 48" Dia.

OPTIONS

Protective mesh enclosure†

Single or double protective glass†

Note: Unit dimensions will increase when single or double glass is requested. Please inquire as to actual size.

TYPICAL INTAKE

Intake Size: 17" sq.in. min.

Intake Location: Bottom

TYPICAL EXHAUST

Outdoor appliance, no dedicated vent

GAS

Rating Input: Estimated 90,000 BTU/hr

Minimum Inlet Pressure: 5.5" w.c. Natural Gas / 11" w.c. Propane

Gas System: ½" NPT bottom, Hot Surface Ignition, Smart Valve

Concealed modular burner with plume flame

CONSTRUCTION

Stainless steel or satin galvanized (black)*, delivered rough finished, ready to clad; supplied locally by others

ELECTRICAL

Standalone NEMA weatherproof box with built-in on/off switch mounted within 50'-150' of firepit near 120 VAC 5 AMP exterior outlet

Box includes short whip and three prong plug

BURNER MEDIA

Glass media

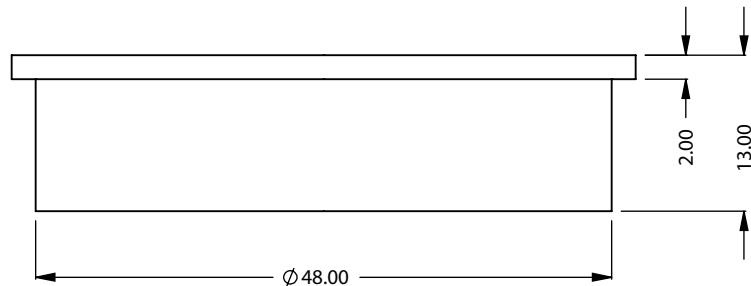
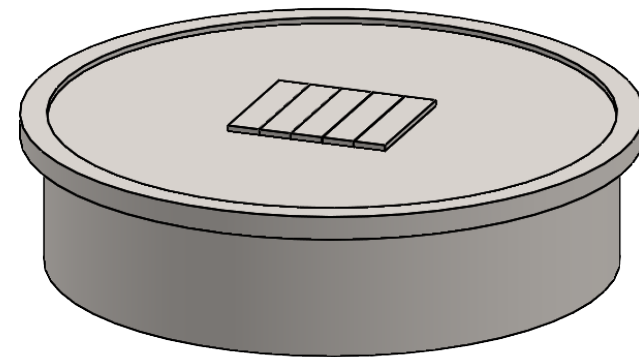
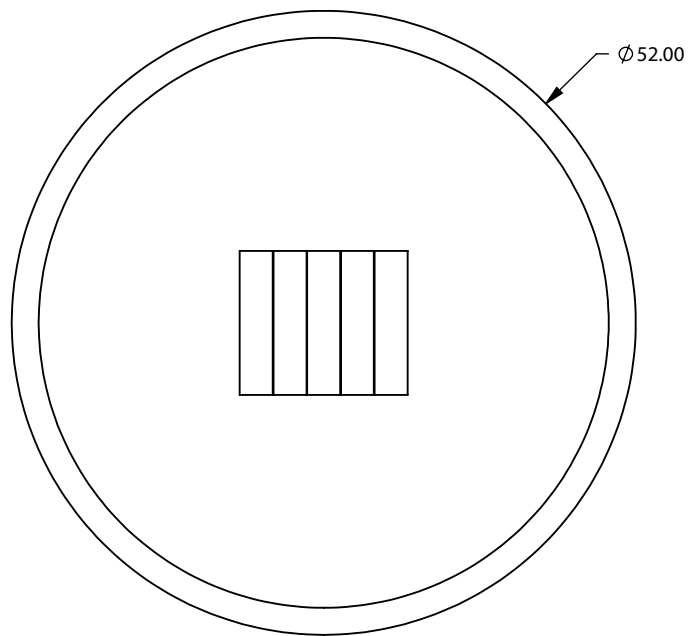
Optional: Driftwood logs, speckled stones, campfire logset

TESTING STANDARDS

ANSI Z21.97-2017/CSA 2.41-2017

† May be available, please inquire on your specific project, waiver required

* Option can be used when the firepit is in a protected or covered location



PRELIMINARY
DRAWING ONLY 

EXAMPLE CONFIGURATION

MONTIGO COMMERCIAL FIREPLACES ARE CUSTOM BUILT FOR EACH PROJECT. THIS DRAWING IS FOR REFERENCE ONLY.

FLUE AND AIR INTAKE SIZES ARE SUBJECT TO CHANGE DEPENDING ON VENT RUN.

UNLESS OTHERWISE SPECIFIED

DIMENSIONS ARE IN INCHES
TOLERANCES: FRACTIONAL $\pm 1/8"$

DATE

2/6/2023

CFPO-RD-48

Round Firepit

Bottom Intake

MONTIGO
the art of **fireplaces**
www.montigo.com