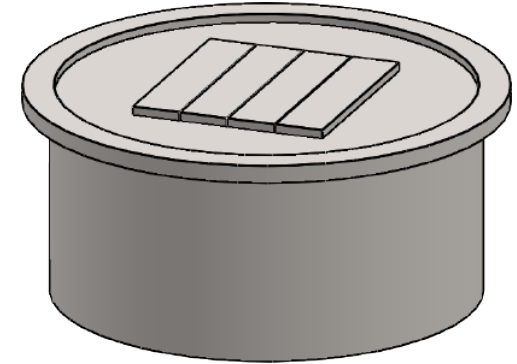


# MONTIGO® CFPO-R2 Firepit Round

## TECHNICAL SPECIFICATION

This Montigo commercial firepit and its associated components are part of a custom engineered system. All systems are tested and certified to current ANSI Standards with CSA International US and Canada.

Please contact Montigo to confirm if your installation requirements are within the parameters of these standard specifications.



### OVERVIEW

Burner Area: 24" Dia.

Barriers & Screens:

Single or double protective glass†

Protective mesh enclosure†

### TYPICAL INTAKE

Intake Size: 10" sq.in. min.

Intake Location: Bottom

### TYPICAL EXHAUST

Outdoor appliance, no dedicated vent

### GAS

Rating Input: Estimated 60,000 BTU/hr

Minimum Inlet Pressure: 5.5" w.c. Natural Gas / 11" w.c. Propane

Gas System: ½" NPT bottom, Hot Surface Ignition, Smart Valve

Concealed modular burner with 16" plume flame

### CONSTRUCTION

Stainless steel or satin galvanized (black)‡, delivered rough finished, ready to clad

### ELECTRICAL

120 VAC, single phase, dedicated circuit, AMP rating depends on actual spec

### BURNER MEDIA

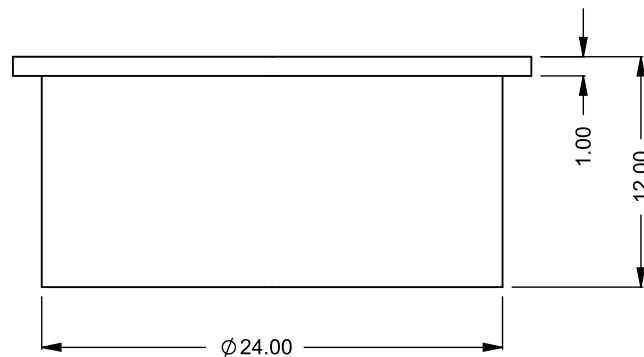
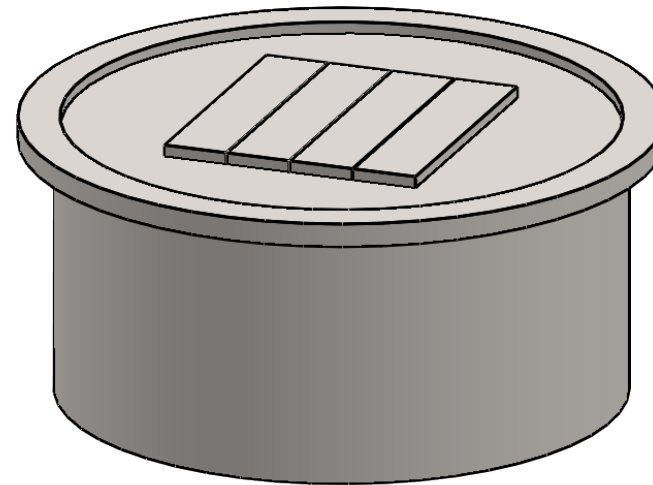
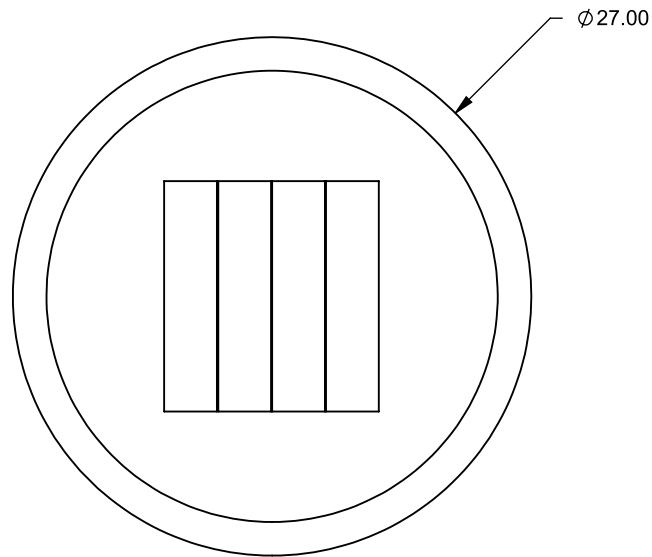
Glass media

### TESTING STANDARDS

ANSI Z21.97-2017/CSA 2.41-2017

† May be available, please inquire on your specific project, waiver required

‡ Option can be used when the firepit is in a protected or covered location



**CFPO-R2**  
 Round Firepit  
**Bottom Intake**

**PRELIMINARY  
 DRAWING ONLY** 

EXAMPLE CONFIGURATION	UNLESS OTHERWISE SPECIFIED	DATE
MONTIGO COMMERCIAL FIREPLACES ARE CUSTOM BUILT FOR EACH PROJECT. THIS DRAWING IS FOR REFERENCE ONLY.  FLUE AND AIR INTAKE SIZES ARE SUBJECT TO CHANGE DEPENDING ON VENT RUN.	DIMENSIONS ARE IN INCHES TOLERANCES: FRACTIONAL $\pm 1/8"$	28/08/2020

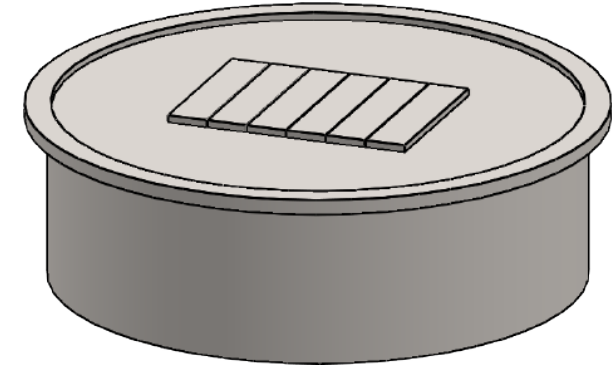
**MONTIGO**  
 the art of **fireplaces**  
[www.montigo.com](http://www.montigo.com)

# MONTIGO® CFPO-R3 Firepit Round

## TECHNICAL SPECIFICATION

This Montigo commercial firepit and its associated components are part of a custom engineered system. All systems are tested and certified to current ANSI Standards with CSA International US and Canada.

Please contact Montigo to confirm if your installation requirements are within the parameters of these standard specifications.



### OVERVIEW

Burner Area: 36" Dia.

Barriers & Screens:

Single or double protective glass<sup>†</sup>

Protective mesh enclosure<sup>†</sup>

### TYPICAL INTAKE

Intake Size: 13 1/2" sq.in. min.

Intake Location: Bottom

### TYPICAL EXHAUST

Outdoor appliance, no dedicated vent

### GAS

Rating Input: Estimated 80,000 BTU/hr

Minimum Inlet Pressure: 5.5" w.c. Natural Gas / 11" w.c. Propane

Gas System: 1/2" NPT bottom, Hot Surface Ignition, Smart Valve

Concealed modular burner with 16" plume flame

### CONSTRUCTION

Stainless steel or satin galvanized (black)<sup>†</sup>, delivered rough finished, ready to clad

### ELECTRICAL

120 VAC, single phase, dedicated circuit, AMP rating depends on actual spec

### BURNER MEDIA

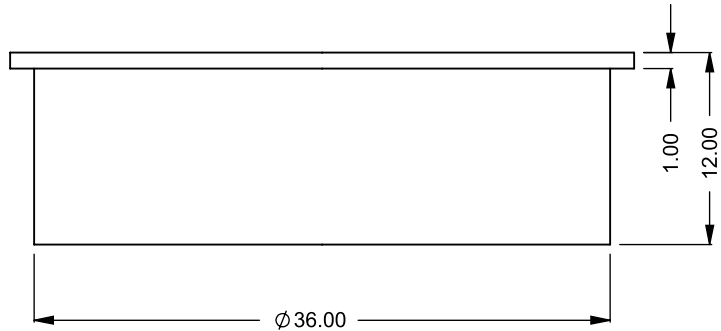
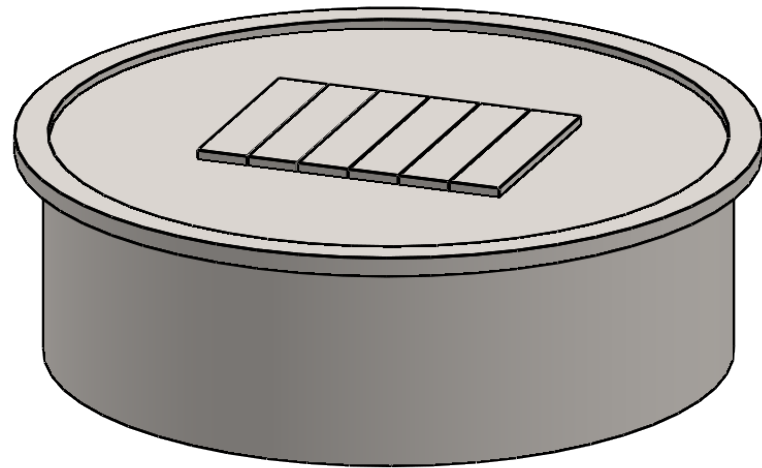
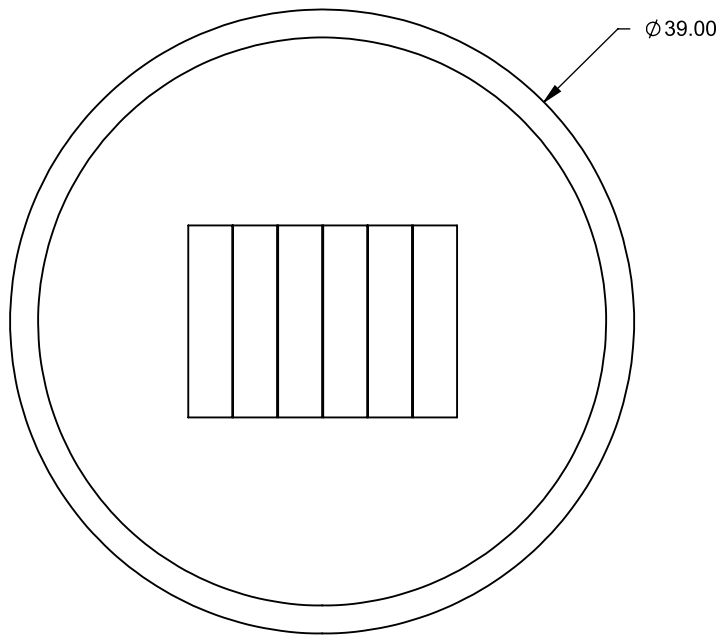
Glass media

### TESTING STANDARDS

ANSI Z21.97-2017/CSA 2.41-2017

<sup>†</sup> May be available, please inquire on your specific project, waiver required

<sup>†</sup> Option can be used when the firepit is in a protected or covered location



**CFPO-R3**  
 Round Firepit  
**Bottom Intake**

**PRELIMINARY  
 DRAWING ONLY** 

EXAMPLE CONFIGURATION	UNLESS OTHERWISE SPECIFIED	DATE
MONTIGO COMMERCIAL FIREPLACES ARE CUSTOM BUILT FOR EACH PROJECT. THIS DRAWING IS FOR REFERENCE ONLY.  FLUE AND AIR INTAKE SIZES ARE SUBJECT TO CHANGE DEPENDING ON VENT RUN.	DIMENSIONS ARE IN INCHES TOLERANCES: FRACTIONAL $\pm 1/8"$	28/08/2020

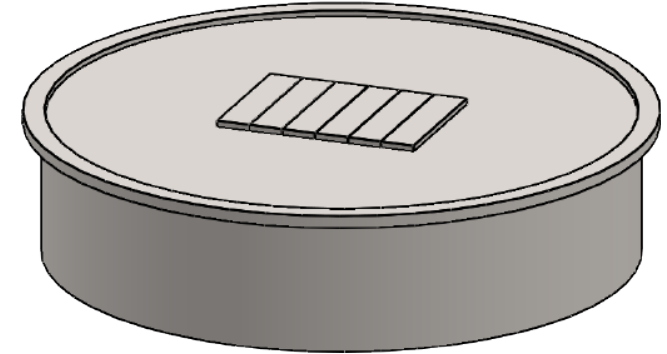
**MONTIGO**  
 the art of **fireplaces**  
[www.montigo.com](http://www.montigo.com)

# MONTIGO® CFPO-R4 Firepit Round

## TECHNICAL SPECIFICATION

This Montigo commercial firepit and its associated components are part of a custom engineered system. All systems are tested and certified to current ANSI Standards with CSA International US and Canada.

Please contact Montigo to confirm if your installation requirements are within the parameters of these standard specifications.



### OVERVIEW

Burner Area: 48" Dia.

Barriers & Screens:

Single or double protective glass<sup>†</sup>

Protective mesh enclosure<sup>†</sup>

### TYPICAL INTAKE

Intake Size: 17" sq.in. min.

Intake Location: Below burner

### TYPICAL EXHAUST

Outdoor appliance, no dedicated vent

### GAS

Rating Input: Estimated 90,000 BTU/hr

Minimum Inlet Pressure: 5.5" w.c. Natural Gas / 11" w.c. Propane

Gas System: ½" NPT bottom, Hot Surface Ignition, Smart Valve

Concealed modular burner with 16" plume flame

### CONSTRUCTION

Stainless steel or satin galvanized (black)<sup>‡</sup>, delivered rough finished, ready to clad

### ELECTRICAL

120 VAC, single phase, dedicated circuit, AMP rating depends on actual spec

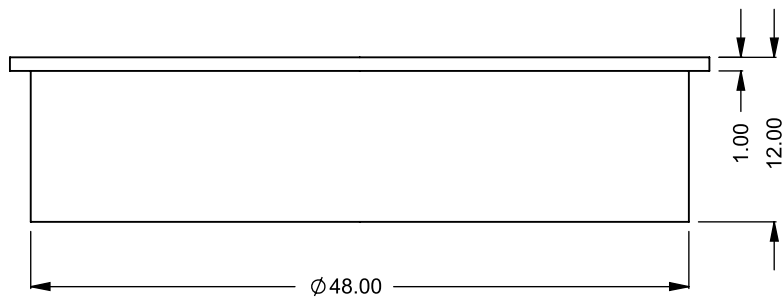
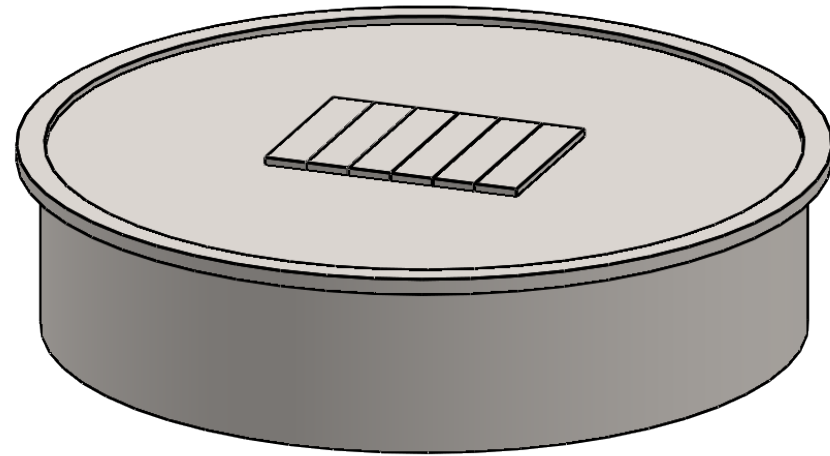
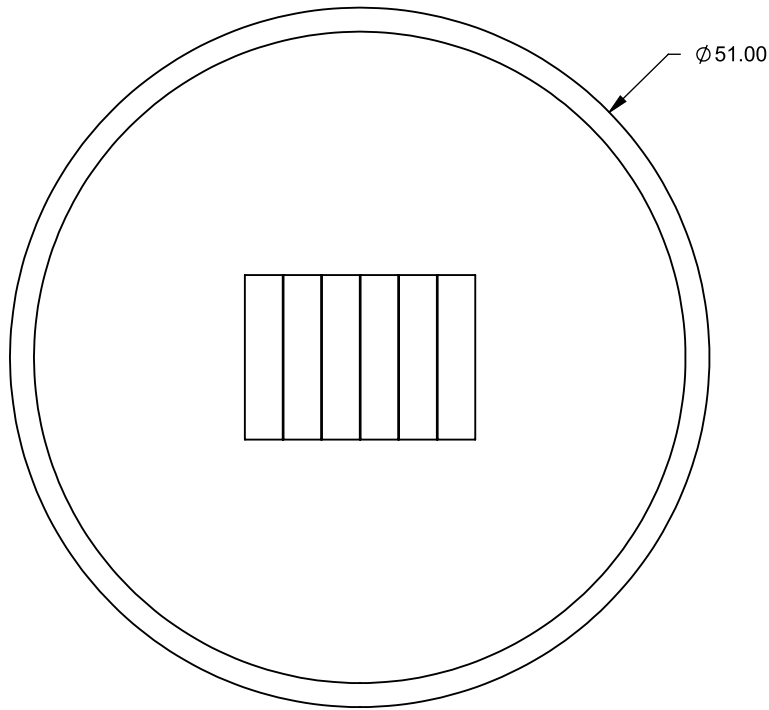
### BURNER MEDIA

Glass media, campfire logset<sup>◊</sup>

### TESTING STANDARDS

ANSI Z21.97-2017/CSA 2.41-2017

<sup>†</sup> May be available, please inquire on your specific project, waiver required  
<sup>‡</sup> Option can be used when the firepit is in a protected or covered location  
<sup>◊</sup> Optional



**CFPO-R4**  
 Round Firepit  
**Bottom Intake**

**PRELIMINARY  
 DRAWING ONLY** 

<b>EXAMPLE CONFIGURATION</b>	<b>UNLESS OTHERWISE SPECIFIED</b>	<b>DATE</b>
MONTIGO COMMERCIAL FIREPLACES ARE CUSTOM BUILT FOR EACH PROJECT. THIS DRAWING IS FOR REFERENCE ONLY.  FLUE AND AIR INTAKE SIZES ARE SUBJECT TO CHANGE DEPENDING ON VENT RUN.	DIMENSIONS ARE IN INCHES TOLERANCES: FRACTIONAL ± 1/8"	28/08/2020

**MONTIGO**  
 the art of **fireplaces**  
[www.montigo.com](http://www.montigo.com)