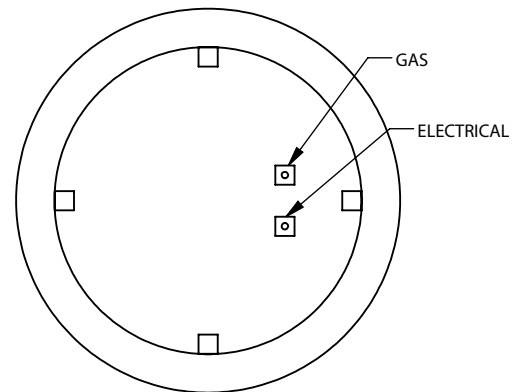
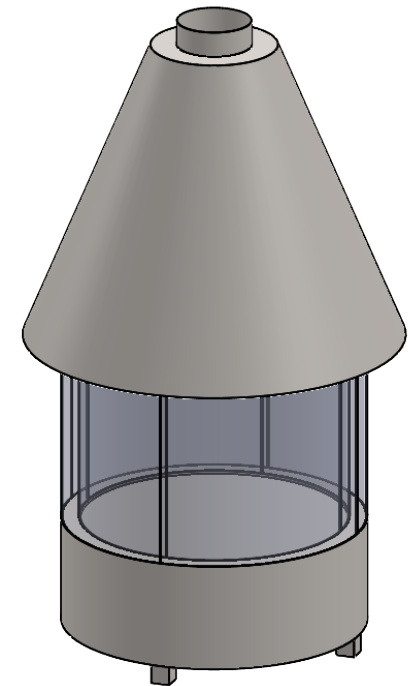


TOP VIEW



BOTT VIEW



**R48X30**  
 Custom Round  
**Cone Hood**

**PRELIMINARY  
 DRAWING ONLY**

| EXAMPLE CONFIGURATION  | UNLESS OTHERWISE SPECIFIED                                    | DATE       |
|--|---|------------|
| MONTIGO COMMERCIAL FIREPLACES ARE CUSTOM BUILT FOR EACH PROJECT. THIS DRAWING IS FOR REFERENCE ONLY.<br><br>FLUE AND AIR INTAKE SIZES ARE SUBJECT TO CHANGE DEPENDING ON VENT RUN. | DIMENSIONS ARE IN INCHES<br>TOLERANCES: FRACTIONAL $\pm 1/8"$ | 14/02/2023 |

DATE  
14/02/2023

**MONTIGO**  
 the art of **fireplaces**  
 www.montigo.com