



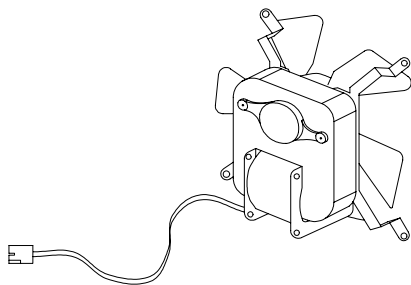
Installing the RFK3002R/3004R Fan Kit

Optional Fans
for use with models:

B34 DV2-F

B38 DV2-F

(with RX200 NG/LP
upgrade)



CAUTION

Ensure that all power to the appliance is off at the electrical breaker or fuse before beginning installation. Ensure gas is turned off at the shutoff valve before beginning installation.



- This kit should be installed by a qualified person.
- Check local codes and read all instructions prior to installation.



WARNING

When installing the fireplace - gas lines, fittings, accessories or any other objects cannot impede the proper movement of the door buckles.

General Information

This blower kit is for installation with the models listed above.

KIT #	Contents
RFK3002R	2 fans, 1 PC2, 10 screws (HW2054), tie-down adhesives, remote control
RFK3004R	4 fans, 1 PC4, 20 screws (HW2054), tie-down adhesives, remote control

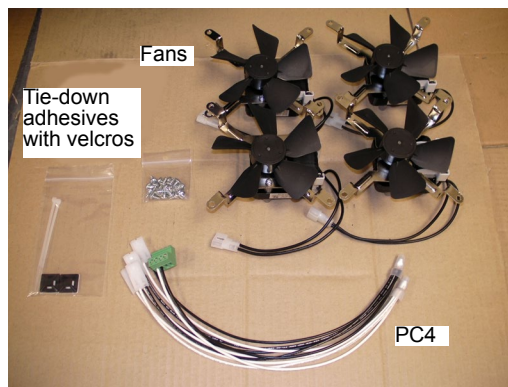


Figure 2 Kit contents (RFK3004R).

Before You Begin

- Please read all instructions carefully
- We strongly recommend that all electrical service work be performed by a qualified electrical contractor.
- Check to ensure that all components required for installation are included in your package.

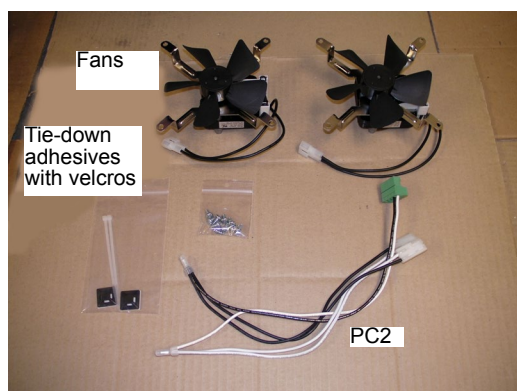


Figure 1 Kit contents (RFK3002R).

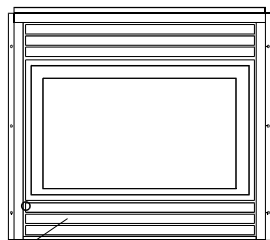


Installation

Installation

1. Accessing the Control Compartment

- Flip down the lower horizontal trims of the fireplace **Figure 3.**)



Lower horizontal trim

Figure 3 Accessing control compartment.

2. Fan Motor Installation

- Install each fan motor with the blades facing the 4" round fan opening. Attach the mounting legs by screwing into the pilot holes around the fan opening. Spin the fan blades by hand to ensure they don't hit the fan opening. (See **Figure 4.**)

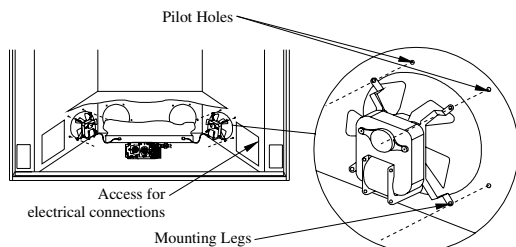


Figure 4 Cutaway view of control compartment showing fan motor installation.

3. Electrical Connections

- Plug each of the fan motor connectors into a quick connector on the wire harness.

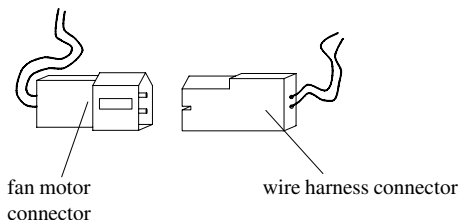


Figure 5 Electrical Connections.

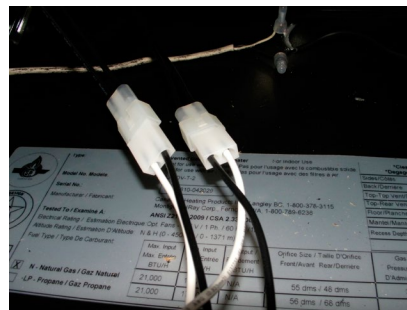


Figure 6 Fan motor connectors plugged into wire harness connectors.

- Connect the other end of the fan harness to control module connection X10.

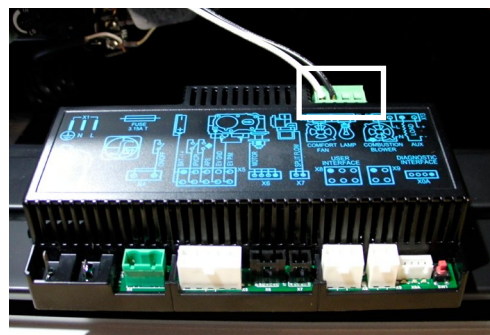


Figure 7 X10 Connection.

4. Operation

- Turn on electrical power at the breaker or fuse.
- Using the remot control, turn the fans on and adjust speed as required (follow instructions in **XG0677 - Proflame 2 Operating instructions.**)

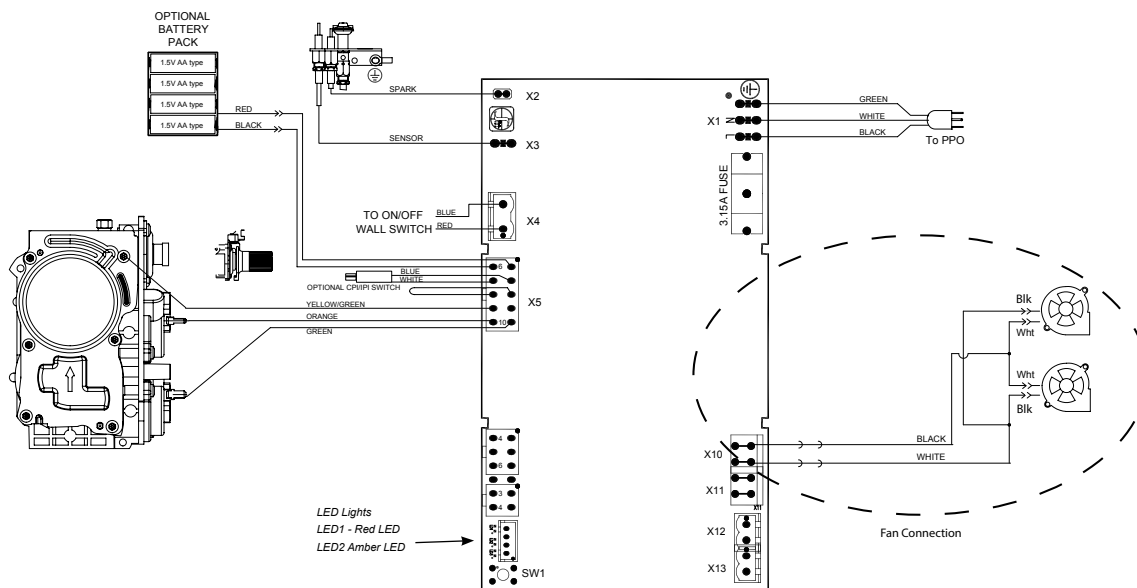


Figure 8 Wiring Schematic for Optional Fans with Proflame 2 System.

Wiring for the *optional* Fan Kit

All **B-Series DV-2** fireplaces may be equipped with optional fan kits for circulating heat into the living space.

Installations in Canada which employ the fans must be electrically grounded in accordance with **CSA C22.1** Canadian Electrical Code Part 1 and/or Local Codes.

Installations in the USA which employ the fans must be grounded in accordance with local codes or, in the absence of local codes, with the National Electrical Code, **ANSI/NFPA 70-1987**.

NOTE: If any of the original wire supplied with the appliance is replaced, it must be replaced with the same type, or its equivalent.

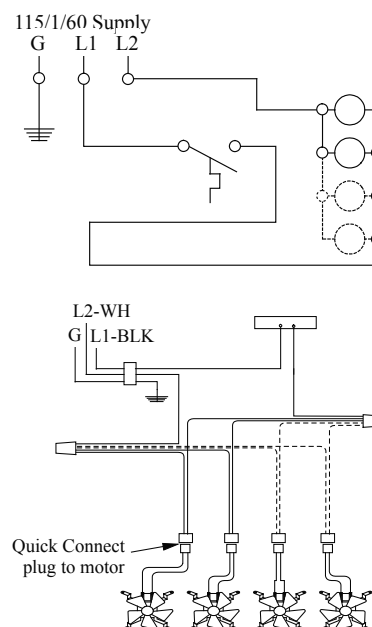


Figure 9. Wiring schematic for optional fans.



Proflame 2 Fan Kit RFK 3002R/3004R