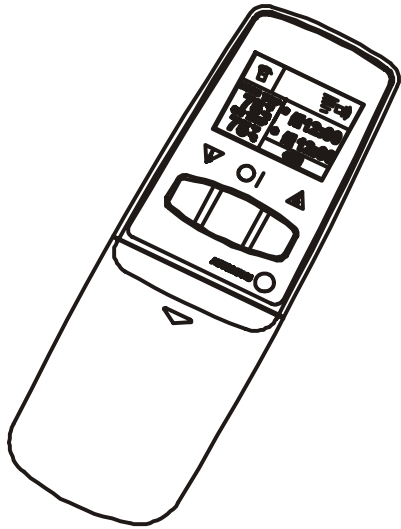


Installation and Operation



Thermostatic Remote

Model RX12 (NG)

Model RX12 (LP)

Before You Begin:

Features:

- Remotely control your gas logs, inserts and gas fireplaces equipped with a millivolt flame high/low modulating gas valve.
- The Transmitter uses a built-in temperature sensor to automatically control room temperature without the need for external wiring.
- Two modes of control: manual and auto (thermostatic).

Kit Contents:

- | | |
|-------------------|--------------------|
| ■ Transmitter | ■ Mounting Plate |
| ■ A/C adaptor | ■ Wires |
| ■ Receiver Sensor | ■ Receiver Box |
| ■ Valve regulator | ■ Regulator screws |

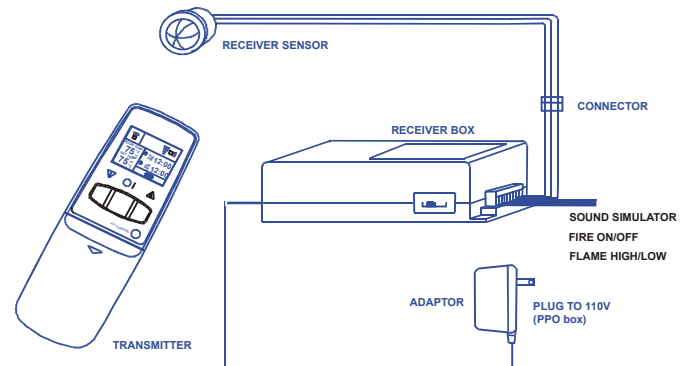


Figure 1. RX12 system components (gas valve regulator not shown).

Warning!

Read and follow all instructions outlined in this manual before and during installation. Any modifications may result in a fire and/or safety hazard and will void the warranty.

Installation

A. Converting the Gas Valve

1. Using a Torx T20, or slotted screwdriver, remove and discard the three pressure regulator mounting screws (item A in Figure 2), pressure regulator tower (B), and the spring and diaphragm assembly (C).
2. Ensure that the rubber gasket (item D in Figure 3) is properly positioned and install the new modulating pressure regulator assembly to the valve using the new screws (E) supplied with this kit. Tighten the screws securely. (ref. torque = 25 in. Lb.)

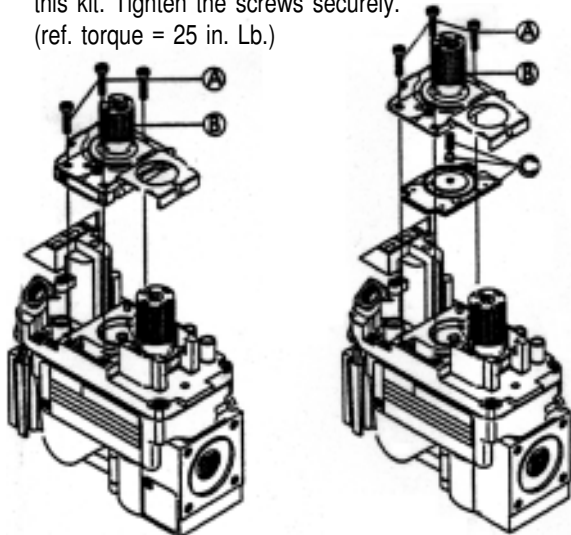


Figure 2. Removing the old gas valve regulator assembly.

3. Install the enclosed identification label (F) to the valve body where it can be easily seen.
4. Apply gas to the system and re-light the appliance, using the instructions supplied with the fireplace.
5. With the main burner 'ON', test the new pressure regulator assembly for leaks using a soap solution.
6. Relight the main burner in both the 'HI' and 'LO' positions, and verify proper burner ignition and operation.

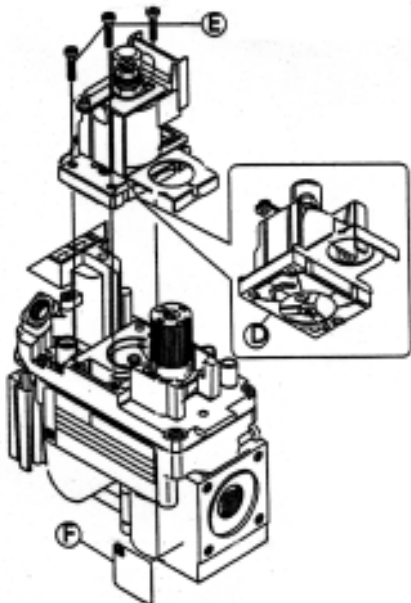


Figure 3. Installing the new gas valve regulator assembly.

B. Receiver

The RX12 receiver consists of the control box and a sensor assembly. The control box has a three-position (REMOTE, OFF and ON) switch, three sensor input wires which connect the sensor to the control box, and six output control wires which connect the control box to the gas control valve.

The two red wires control ON/OFF of the gas valve; the two green wires control flame high/low flame level of the gas valve, the blue and black wires control Fire Crackler Sound System CF5 (optional). The receiver is powered by the wall mount AC Adapter.

Receiver Sensor

In order for the remote control to function properly, the receiver eye/sensor has to be installed within line of sight of the transmitter.

1. Insert the RECEIVER SENSOR through the hole in the mounting plate. Tighten the screwnut.
2. Attach the mounting plate to the fireplace in one of the positions shown in Figure 4. Bend the assembly so that the SENSOR is facing the back side of the horizontal trims
3. Connect the connector to the receiver control box.

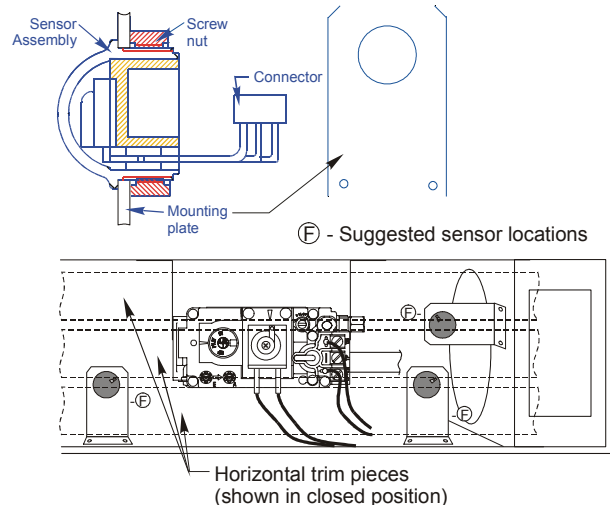


Figure 4. Installing the Receiver Sensor.

Wiring

1. The two RED output wires should be connected to the Fire SW terminals on the Receiver box and the TH and TH/TP terminals of the gas valve.
2. The two GREEN output wires should be connected to the Flame Level terminals and the modulating gas pressure regulator terminals on the gas valve.
3. The BLUE and BLACK output wires should be connected to the Fire Crackler (optional).
4. Connect the receiver to the AC adapter and plug the adapter into a polarized 110 volt AC outlet.
5. Slide the three-position switch to REMOTE position when using remote, otherwise turn it to the OFF position. *The fireplace can still be turned ON in case of power failure, by sliding this switch to the ON position.*

Installation

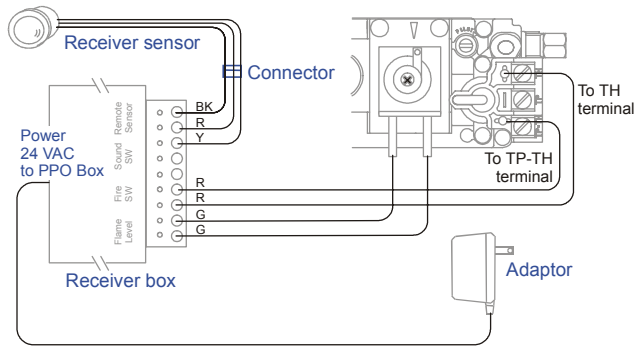


Figure 5. System wiring connections.

Warning!

Make sure that all the output wires are connected properly before powering the receiver.

C. Installing the Batteries

The transmitter is battery operated.

1. Open the cover in t (shown on the cover) direction.
2. Place two 1.5 volt AAA batteries in battery compartment. Make sure that the battery polarity is correct.
3. Press the RESET button. Put the cover back.

Notes:

- For best operation, please use alkaline batteries.
- When changing batteries, be sure that both are of the same type.
- When the battery indicator is flashing, it indicates that the battery is low.

D. Precautions

- Do not expose the transmitter directly to intense light, such as direct sunlight, as it may affect the remote functions.
- Do not put the transmitter close to hot and/or damp place, it may fade the surface of remote or damage the transmitter.
- Do not drop or shake the transmitter, it may damage the transmitter.

Operation

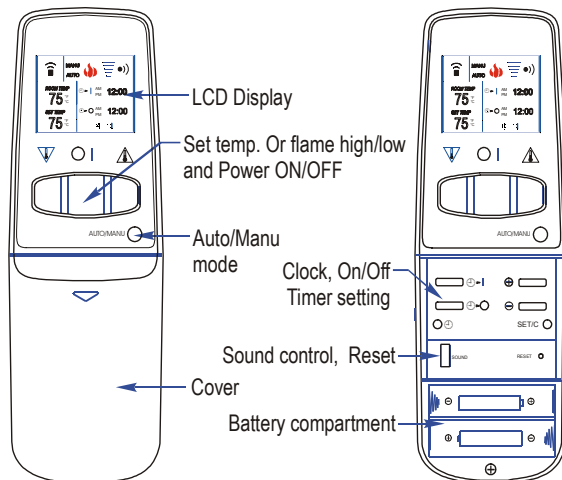


Figure 6. Remote transmitter.

E. Clock Setting

1. Press the CLOCK SET (🕒) button, "AM," or "PM" will start flashing.
2. Press the UP/DOWN (↑, ↓) buttons, to set the correct time. The time will change faster if these buttons are held down.
3. Press the (🕒) button again to confirm. Sign (:) flashing means the clock is working.

Note:

- When ON/OFF timer is on display, the clock cannot be set.

F. ON/OFF Timer Setting

ON Timer Setting

1. Press the ON TIMER (🕒▶) button; on timer symbol will flash.
2. Press the UP/DOWN (↑, ↓) buttons to change the time by 10 minute increments. The time change will be faster, if these buttons are held down.
3. When the display reads the desired time, press the (SET/C) button to confirm the setting.
4. LCD display will show ON timer. The remote control will turn on at the "ON time" set.
5. To cancel the setting, press the (SET/C) button again.

OFF Timer Setting

1. Press the OFF TIMER (🕒▶) button; off timer symbol will flash.
2. Press the UP/DOWN (↑, ↓) buttons to change the time by 10 minute increments. The time change will be faster, if these buttons are held down.
3. When the display reads the desired time, press the (SET/C) button to confirm the setting.
4. LCD display will show OFF timer. The remote control will automatically turn off at the "OFF time" set.
5. To cancel the setting, press the (SET/C) button again.

Note:

- When ON/OFF timer is set, OFF operation does not affect the ON/OFF timer setting.

Operation

G. Combination Operations

The Remote On/Off, ON timer and OFF timer functions can be combined to get different combination operations:

1. **On - OFF timer combination:** when the control is on, you can program a time to turn the control off.
2. **Off - ON timer combination:** when the control is off, you can program a time to turn the control on.
3. **On - OFF timer - ON timer combination:** when the control is on, you can program a time to turn the control off and another time to turn it on.
4. **Off - ON timer - OFF timer combination:** when the control is off, you can program a time to turn the control on and another time to turn it off.

Note:

- Press the SET/C button, to cancel timer settings.

H. Basic ON/OFF Operation

ON Operation

Direct the remote toward the receiver sensor and press <O I>. The LCD will display a fire symbol and the receiver will respond with a beep. Press the AUTO/MANU set button to select MANU (manual) mode. Then press UP (▲) button to turn on the Fire.

OFF Operation

Directing remote to receiver sensor, Press <O I>; the fire will be off. The fire symbol on LCD will turn blank. The receiver will respond with a beep and turn off the fire.

Note:

- When ON/OFF timer is set, OFF operation does not affect the ON/OFF timer setting.
- All other functions are controlled by fire on/off. When fire is on, other functions (flame modulation and sound) can be controlled.

Flame Level Control

1. Directing transmitter to receiver sensor, press <O I>; LCD will display a fire symbol. The receiver will respond with a beep.
2. Check LCD display to see if remote is in MANU (manual) mode. If in the AUTO mode, press <AUTO/MANU> button once to change to the manual mode.
3. Press UP/DOWN <▲/▼> buttons to increase or decrease the flames to the level you want. The LCD display will show flame level by the horizontal lines. There are six different flame levels. The fire will shut off below the lowest flame level setting.

Temperature Control

1. Directing transmitter to receiver sensor, press <O I>; LCD will display fire symbol. The receiver will respond with a beep.
2. Check LCD display to see if remote is in AUTO (automatic) mode. If it is in MANU mode, press <AUTO/MANU> button once, to change to the AUTO mode.
3. Press UP/DOWN <▲/▼> button, to set the temperature. The LCD will show the set temperature. The setting temperature range is 60 °F (16 °C) to 95 °F (35 °C)

The room temperature is controlled automatically, based on the set temperature, by modulating the flame height and/or turning the fire on and off, to change the room temperature.

To ensure correct operation, direct transmitter to receiver sensor.

Safety Features:

When away from home for an extended period of time, or as a child-safety feature, you can prevent accidental ignition of the fireplace, by switching the Receiver's 'REMOTE-OFF-ON' switch to the OFF position.

Auto shut-off Feature:

If the transmitter is not directed at the receiver for more than 10 minutes, the fire will be automatically shut off. The receiver will then beep every 2 minutes, until it receives a signal from the transmitter.